



2020 REDISTRICTING BENCHMARK REPORT BEAUFORT COUNTY

REPORT PREPARED BY:

South Carolina Revenue and Fiscal Affairs
Rembert Dennis Building, Room 419
1000 Assembly Street
Columbia, South Carolina 29201
(803)-734-3793

September 27, 2021

REDISTRICTING REPORT 2020
PRESENTED TO: BEAUFORT COUNTY

The South Carolina Revenue and Fiscal Affairs Office (RFA) has prepared the following analysis and accompanying maps regarding the redistricting for Beaufort County Council.

RFA strives to release data that is complete, accurate, and useful. However, we ask that you notify us, either by email (redistricting@rfa.sc.gov) or phone (803-734-3793), of any discrepancies.

ITEMS TO NOTE PRIOR TO REVIEWING THIS REPORT:

- The 2020 Census presents new challenges regarding redistricting as the data below the state level will be affected by the U.S. Census Bureau's efforts with respect to differential privacy. The Bureau has stated that the total population in each state will be "as enumerated," but that all other levels of geography could have some variance from the raw data. This variance is referred to by the Census Bureau as "injecting noise" into the data and is an attempt to improve privacy. The bureau has indicated that no "noise" will be injected into the state total population, but it is likely that noise will be injected for every other level of geography. More noise is injected as the geography levels get smaller. In other words, population counts at the county, city, or block level may not be "as enumerated".
- Race is defined following the guidance provided in OMB Bulletin No. 00-02 which allocates population counts of a "minority race and white" category to the minority race. In Tables 2 and 3, NH DOJ Black is the sum of Non-Hispanic Black and Non-Hispanic Black and White as recommended by the Department of Justice (DOJ).

CONSIDERATIONS FOR PRELIMINARY PLAN:

In developing a preliminary plan, RFA recommends following constitutional and statutory provisions:

- The requirement of “one person, one vote” under the Equal Protection Clause of the 14th Amendment and accepted variances.
- The Voting Rights Act, primarily Section 2, which protects the interest of the racial minority population.
- Other applicable court decisions and federal and state law.

Further, RFA recommends the following set of traditional redistricting principles be considered:

- Districts or wards will be drawn contiguously, so that all parts of the district or ward are connected to each other.
- Districts or wards will be drawn to minimize the division of voting precincts.
- Districts or wards will be geographically compact to the extent practicable, such that nearby areas of population are not bypassed for a more distant population.
- Districts or wards will be drawn, when feasible, with respect to existing districts and communities of interests, which will require input from Council and the citizens.
- Districts or wards will be drawn to comply with other applicable court decisions and federal and state laws.

2020 CENSUS BENCHMARK REPORT

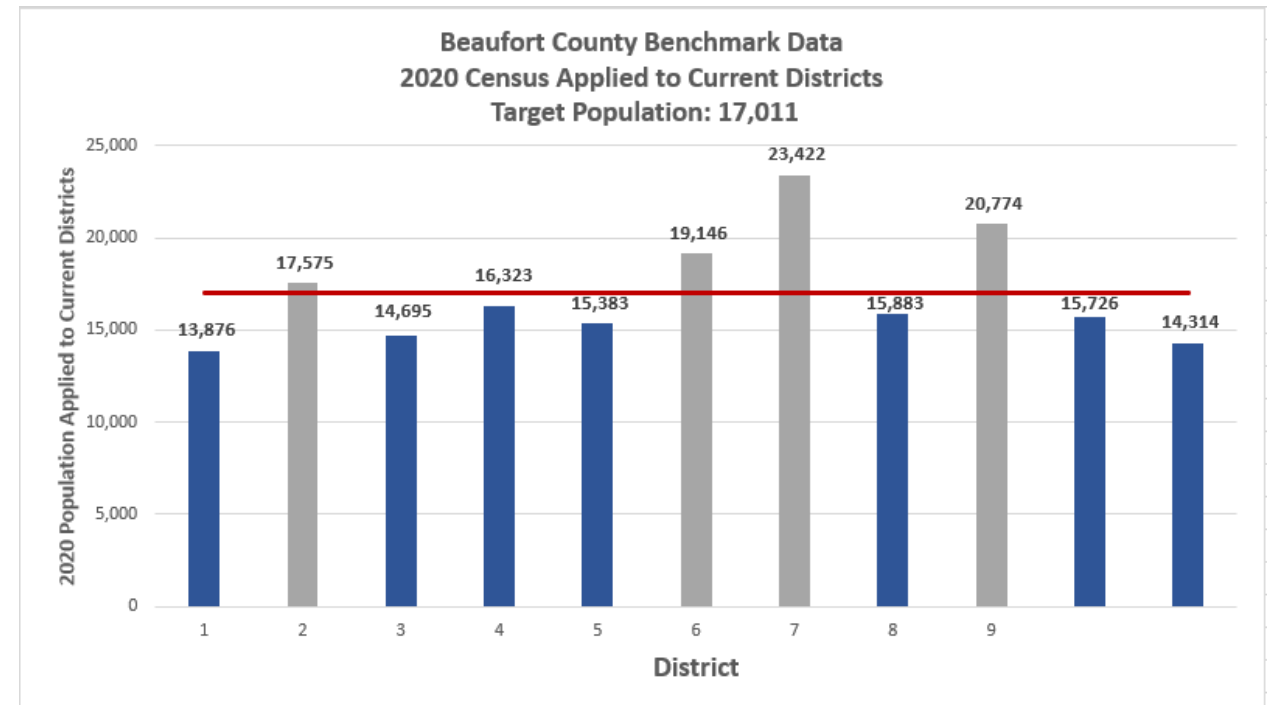
The population of Beaufort County has increased 15.34% from 162,233 to 187,177. As a result, the ideal district changed from 14,748 to 17,011. The Benchmark Report noted a deviation range of 56.12% (the sum of the highest deviation, 37.69%, and the absolute value of the lowest deviation |-18.43%|) which is above the maximum range of 10%. RFA recommends a deviation range of 5%.

The following table and chart show which districts are (under-) or over-populated indicating potential adjustments needed to be within the allowable deviation range.

TABLE 1: 2020 CENSUS COUNTS APPLIED TO CURRENT DISTRICTS

CHART 1:

District	2020 Census	Goal	Over/(Under)	% Deviation
1	13,876	17,011	(3,135)	-18.43%
2	17,575	17,011	564	3.32%
3	14,695	17,011	(2,316)	-13.61%
4	16,323	17,011	(688)	-4.04%
5	15,383	17,011	(1,628)	-9.57%
6	19,146	17,011	2,135	12.55%
7	23,422	17,011	6,411	37.69%
8	15,883	17,011	(1,128)	-6.63%
9	20,774	17,011	3,763	22.12%
10	15,726	17,011	(1,285)	-7.55%
11	14,314	17,011	(2,697)	-15.85%
Lowest Deviation		-18.43%		
Highest Deviation		37.69%		
Deviation Range		56.12%		



MAP 1:

Current County
Council District Lines and
Addresses of Incumbents

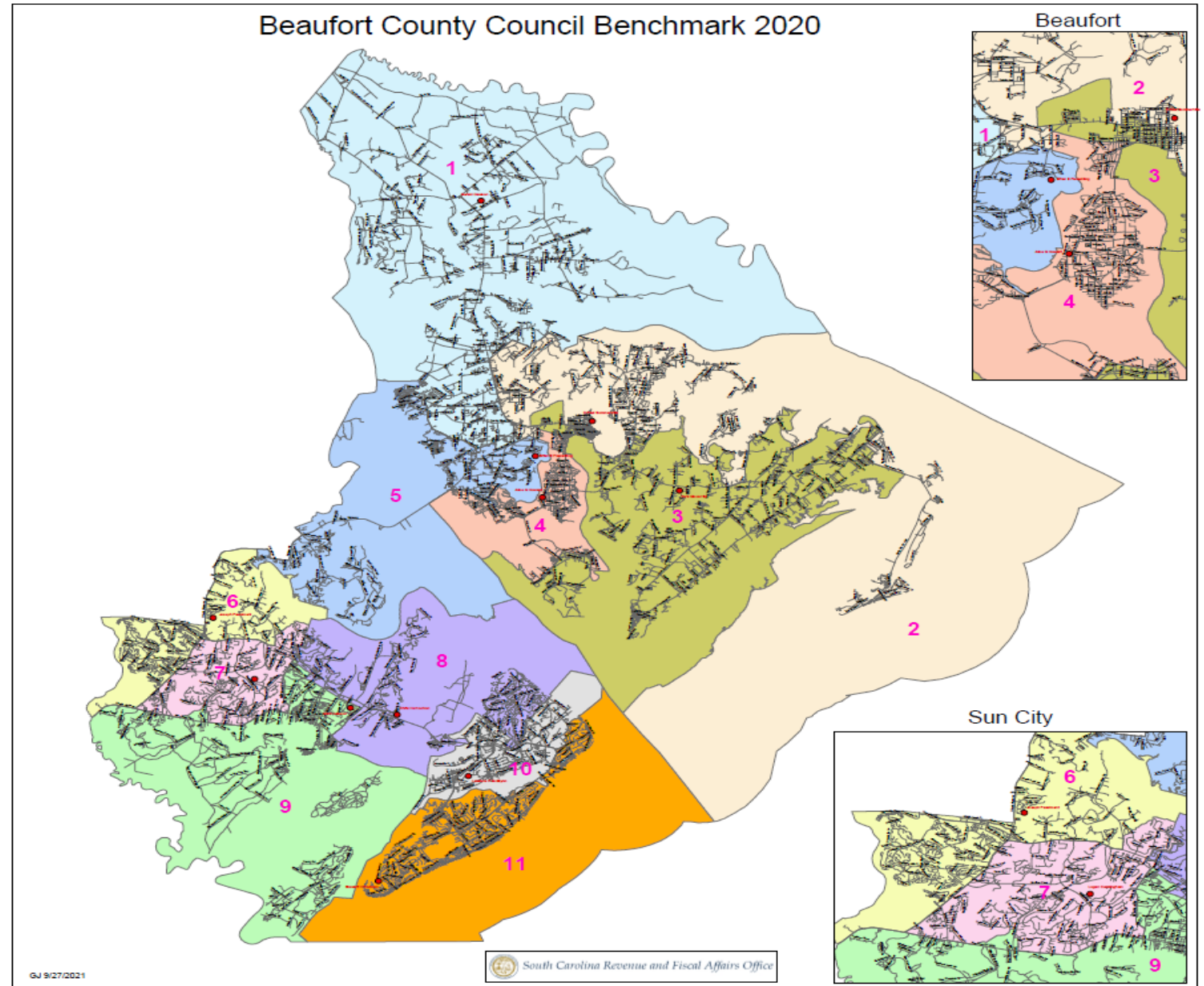


TABLE 2: TOTAL POPULATION BY RACE *RACE DEFINED USING DOJ DEFINITIONS. NOT HISPANIC OR LATINO IS ABBREVIATED AS NH.

District	Total	Hispanic	% Hispanic	NH White	% NH White	NH DOJ Black*	% NH DOJ Black	NH Other Race	% NH Other Race
1	13,876	1,333	9.61%	4,650	33.51%	7,399	53.32%	494	3.56%
2	17,575	1,425	8.11%	13,484	76.72%	1,883	10.71%	783	4.46%
3	14,695	1,358	9.24%	6,719	45.72%	6,061	41.25%	557	3.79%
4	16,323	1,506	9.23%	10,665	65.34%	3,248	19.90%	904	5.54%
5	15,383	1,981	12.88%	9,475	61.59%	2,919	18.98%	1,008	6.55%
6	19,146	938	4.90%	16,412	85.72%	1,117	5.83%	679	3.55%
7	23,422	3,598	15.36%	16,754	71.53%	1,852	7.91%	1,218	5.20%
8	15,883	1,148	7.23%	13,826	87.05%	462	2.91%	447	2.81%
9	20,774	5,289	25.46%	12,666	60.97%	1,950	9.39%	869	4.18%
10	15,726	4,019	25.56%	9,295	59.11%	1,927	12.25%	485	3.08%
11	14,314	816	5.70%	12,758	89.13%	287	2.01%	453	3.16%
Total	187,117	23,411	12.51%	126,704	67.71%	29,105	15.55%	7,897	4.22%

TABLE 3: VOTING AGE POPULATION BY RACE *RACE DEFINED USING DOJ DEFINITIONS. NOT HISPANIC OR LATINO IS ABBREVIATED AS NH.

District	VAP Total	VAP Hispanic	% VAP Hispanic	VAP NH White	% VAP NH White	VAP NH DOJ Black*	% VAP NH DOJ Black	VAP NH Other Race	% VAP NH Other Race
1	10,344	782	7.56%	3,774	36.48%	5,417	52.37%	371	3.59%
2	14,676	1,119	7.62%	11,508	78.41%	1,465	9.98%	584	3.98%
3	11,702	1,037	8.86%	5,690	48.62%	4,571	39.06%	404	3.45%
4	12,812	1,070	8.35%	8,707	67.96%	2,351	18.35%	684	5.34%
5	11,683	1,254	10.73%	7,696	65.87%	2,043	17.49%	690	5.91%
6	17,221	639	3.71%	15,138	87.90%	952	5.53%	492	2.86%
7	17,828	2,326	13.05%	13,470	75.56%	1,224	6.87%	808	4.53%
8	14,226	789	5.55%	12,723	89.43%	359	2.52%	355	2.50%
9	15,611	3,353	21.48%	10,310	66.04%	1,345	8.62%	603	3.86%
10	12,499	2,631	21.05%	8,049	64.40%	1,442	11.54%	377	3.02%
11	13,166	565	4.29%	11,988	91.05%	235	1.78%	378	2.87%
Total	151,768	15,565	10.26%	109,053	71.86%	21,404	14.10%	5,746	3.79%

RFA ANALYSIS RESULTS:

Preliminary results of our analysis indicate there does appear to be racially polarized voting in Beaufort County but more time is needed prior to making a recommendation.

- Voting data was analyzed to determine compliance with Section 2 of the Voting Rights Act.
- The results of the analysis are not absolute due to the limitations of the data; therefore, conclusions are to be used only as a precautionary measure.
- The following techniques were used:
 - Homogeneous Precinct Analysis (Appendix C) - This technique focuses on the racial mix of the precinct. SC voting data is limited for this technique since there is no way to determine the race of the candidate or the voter who cast the ballot.
 - Bivariate Ecological Regression Analysis (Appendix D) - This technique focuses on two aggregate variables and the relationship between them.

RFA RECOMMENDATIONS:

- RFA requests Council conduct a public meeting to discuss this report and solicit feedback from the public.
- RFA recommends Council adopt, through either a resolution or acceptance of this plan, the following traditional redistricting principles:
 - Districts or wards will be drawn contiguously, so that all parts of the district or ward are connected to each other.
 - Districts or wards will be drawn to minimize the division of voting precincts.
 - Districts or wards will be geographically compact to the extent practicable, such that nearby areas of population are not bypassed for a more distant population.
 - Districts or wards will be drawn to comply with other applicable court decisions and federal and state laws.
 - Districts or wards will be drawn, when feasible, with respect to existing districts and communities of interests, which will require input from Council and the citizens.
- RFA recommends Council give careful consideration to minority districts for compliance with Section 2 criteria of the Voting Rights Act.
- Because of the potential effects of differential privacy, RFA recommends Council adopt a deviation range of 5%.

APPENDIX A – POPULATION TREND

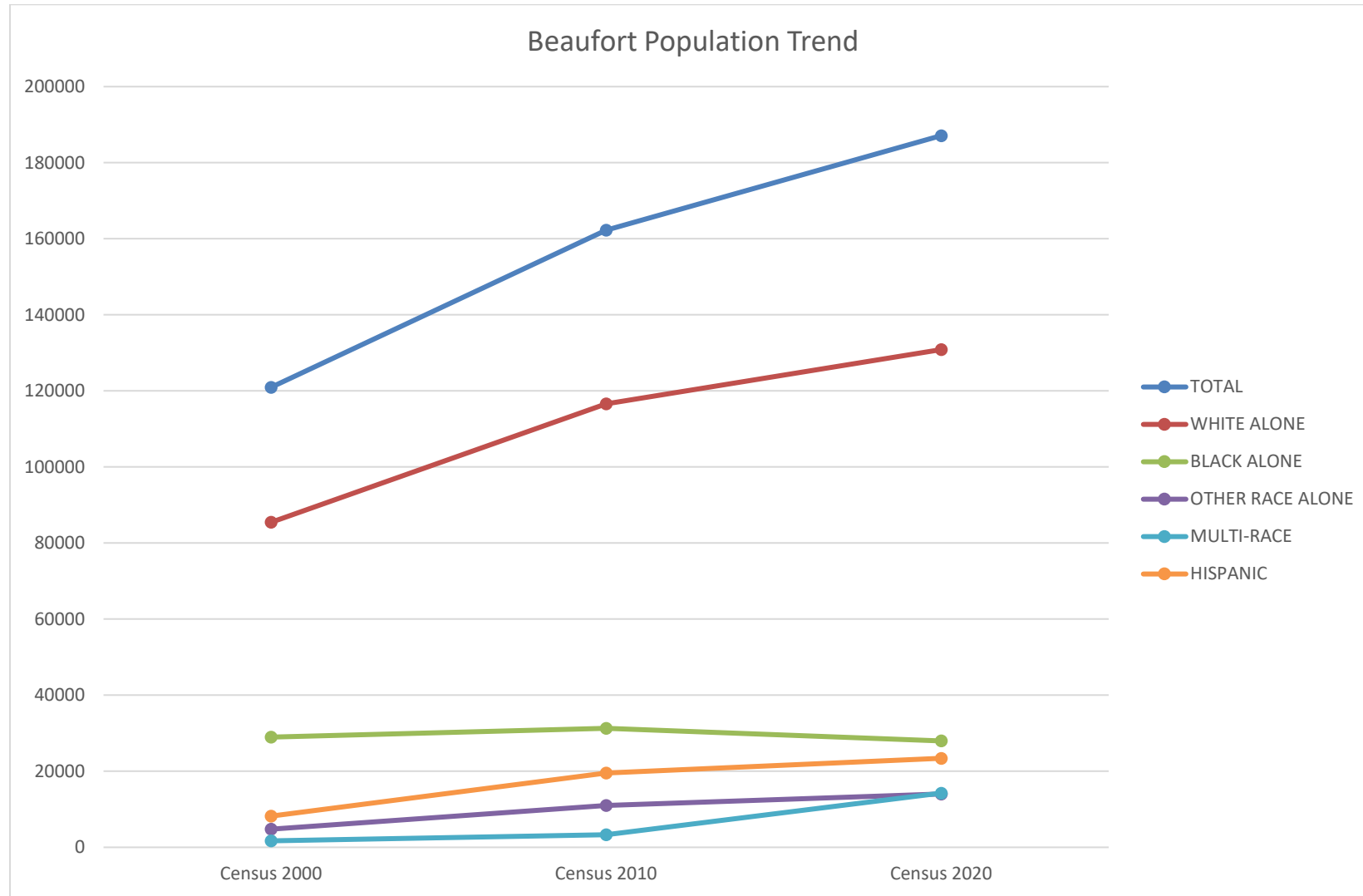
TABLE A-1 PERCENT CHANGE FROM 2010 TO 2020 BY DETAILED RACE CATEGORIES

DOJ Definitions*																										
County	Year	Total Pop	White Alone	Percent of Total	Black Alone	Percent of Total	Other Single Race	Percent of Total	Multiple Race	Percent of Total	Hispanic or Latino Population	Percent of Total	Non-Hispanic White*	Percent of Total	Non-Hispanic Black*	Percent of Total	Non-Hispanic American Indian and Alaska Native*	Percent of Total	Non-Hispanic Asian*	Percent of Total	Non-Hispanic Native Hawaiian and Other Pacific Islander*	Percent of Total	Non-Hispanic Some Other Race*	Percent of Total	Non-Hispanic Multiple Race*	Percent of Total
BEAUFORT	2010	162,233	116,606	71.88%	31,290	19.29%	11,004	6.78%	3,333	2.05%	19,567	12.06%	107,279	66.13%	31,548	19.45%	695	0.43%	2,249	1.39%	137	0.08%	248	0.15%	510	0.31%
BEAUFORT	2020	187,117	130,860	69.93%	27,973	14.95%	14,027	7.50%	14,257	7.62%	23,411	12.51%	126,704	67.71%	29,105	15.55%	2,073	1.11%	3,197	1.71%	199	0.11%	1,651	0.88%	777	0.42%
Percent Change		15.34%	12.22%		-10.60%		27.47%		327.75%		19.65%		18.11%		-7.74%		198.27%		42.15%		45.26%		565.73%		52.35%	

TABLE A-2 PERCENT CHANGE FROM 2010 TO 2020 BY SINGLE RACE CATEGORIES

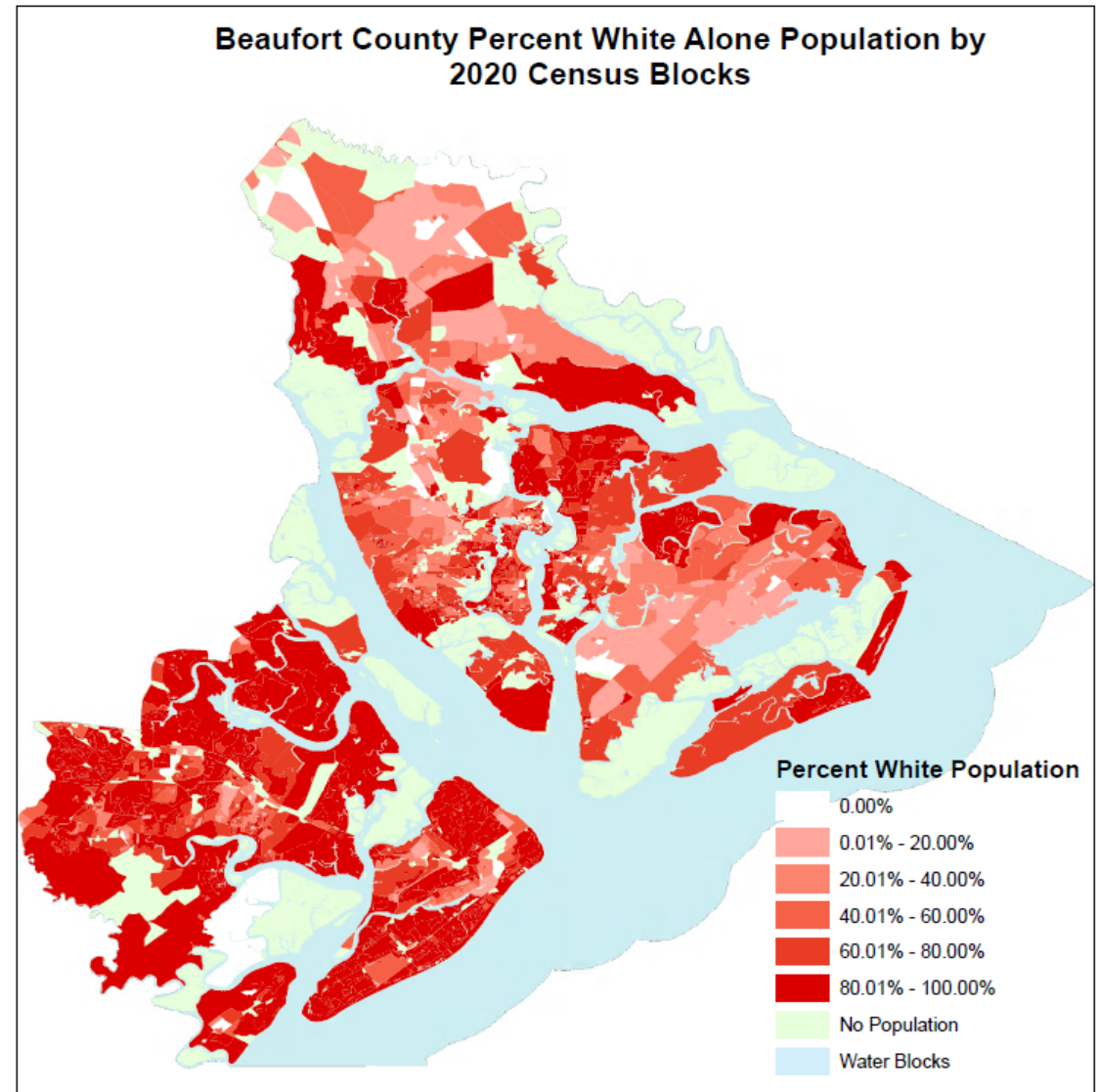
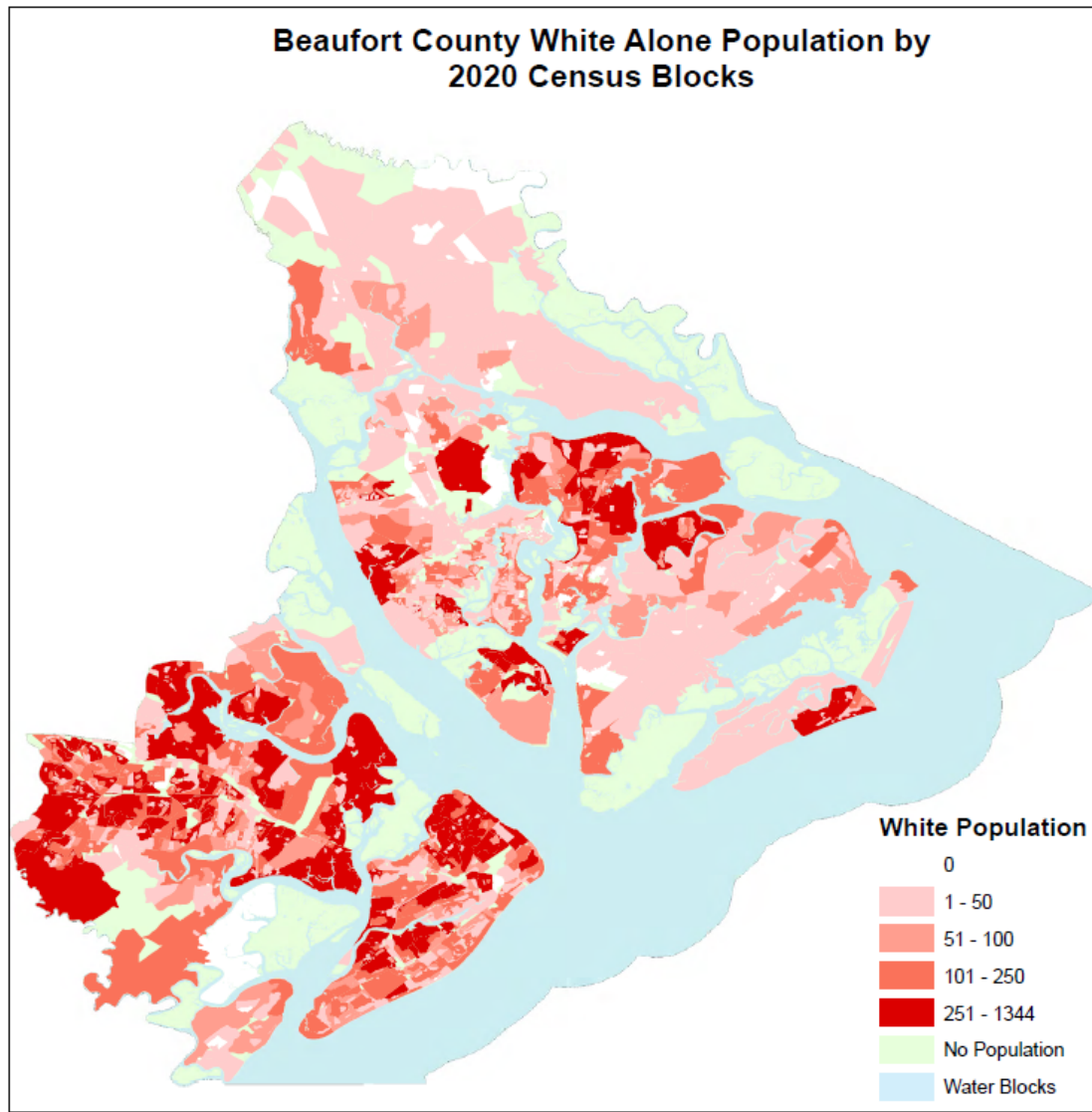
DOJ Definitions*																			
County	Year	2020 Census	Hispanic or Latino Pop	Percent of Total	Non-Hispanic White*	Percent of Total	Non-Hispanic Black*	Percent of Total	Non-Hispanic American Indian and Alaska Native*	Percent of Total	Non-Hispanic Asian*	Percent of Total	Non-Hispanic Native Hawaiian and Other Pacific Islander*	Percent of Total	Non-Hispanic Some Other Race*	Percent of Total	Non-Hispanic Multiple Race*	Percent of Total	
BEAUFORT	2010	162,233	19,567	12.06%	107,279	66.13%	31,548	19.45%	695	0.43%	2,249	1.39%	137	0.08%	248	0.15%	510	0.31%	
BEAUFORT	2020	187,117	23,411	12.51%	126,704	67.71%	29,105	15.55%	2,073	1.11%	3,197	1.71%	199	0.11%	1,651	0.88%	777	0.42%	
Percent Change		15.34%	19.65%		18.11%		-7.74%		198.27%		42.15%		45.26%		565.73%		52.35%		

CHART A-1 POPULATION TREND BY SINGLE RACE, 2000 - 2020

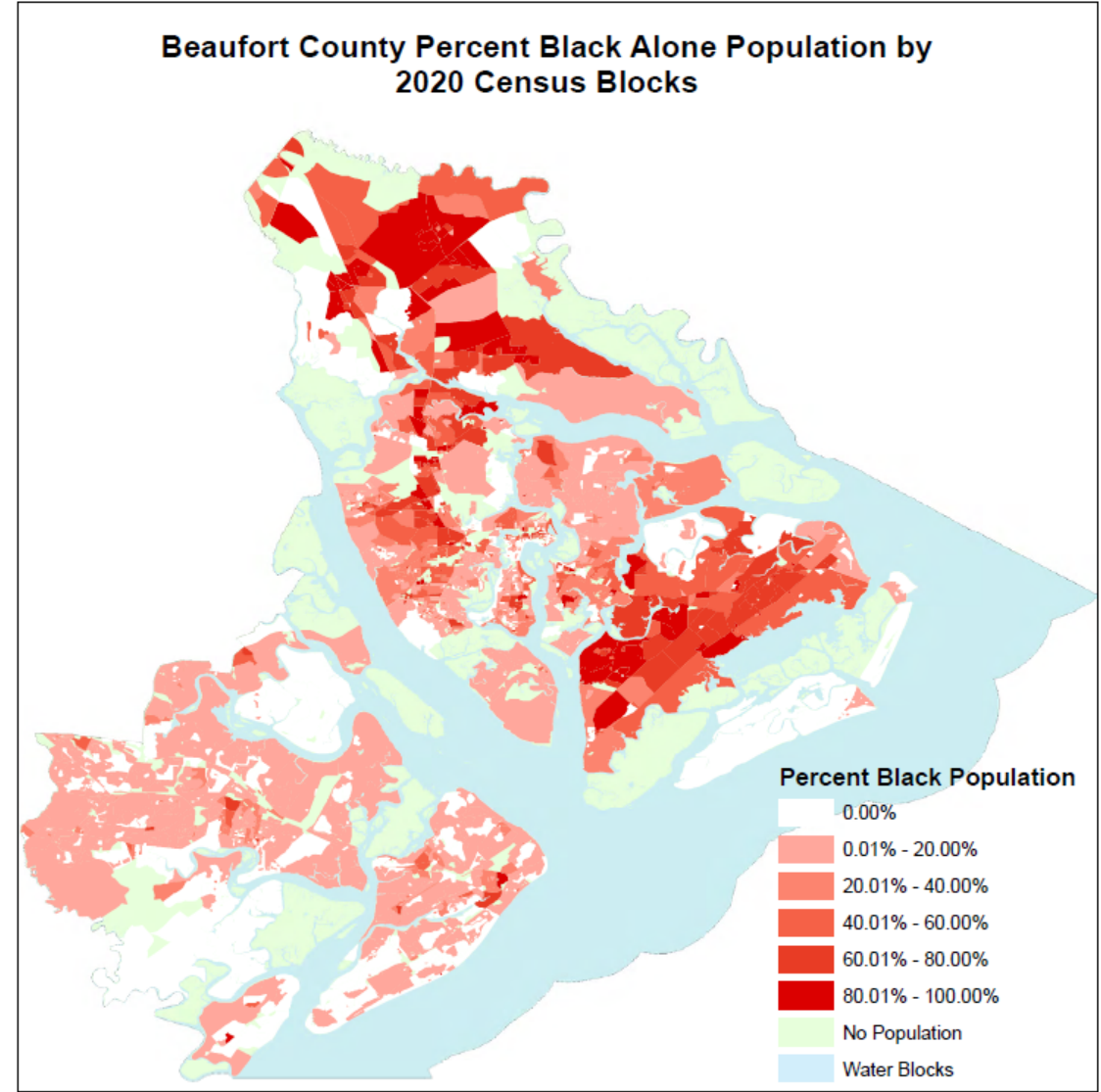
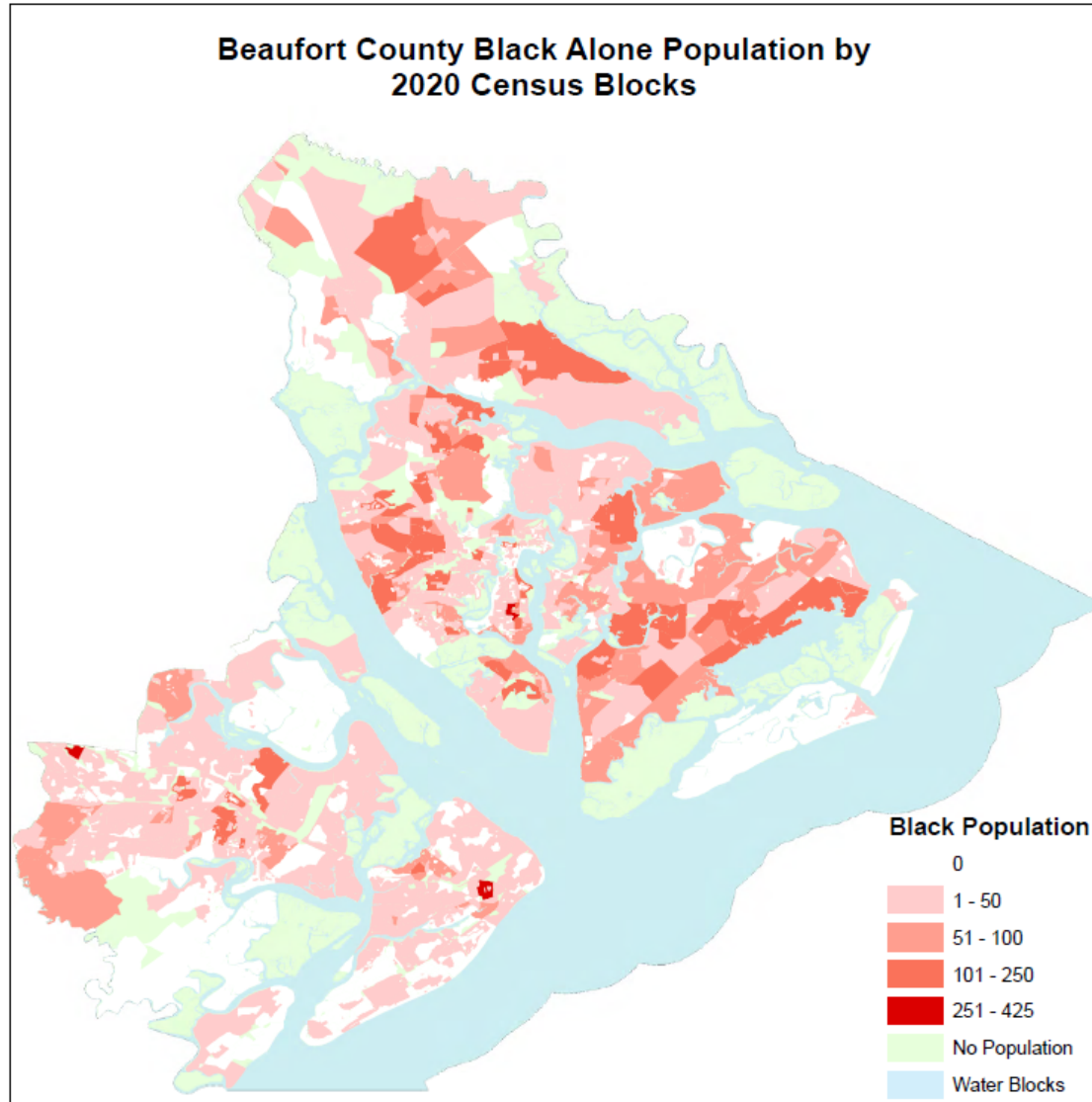


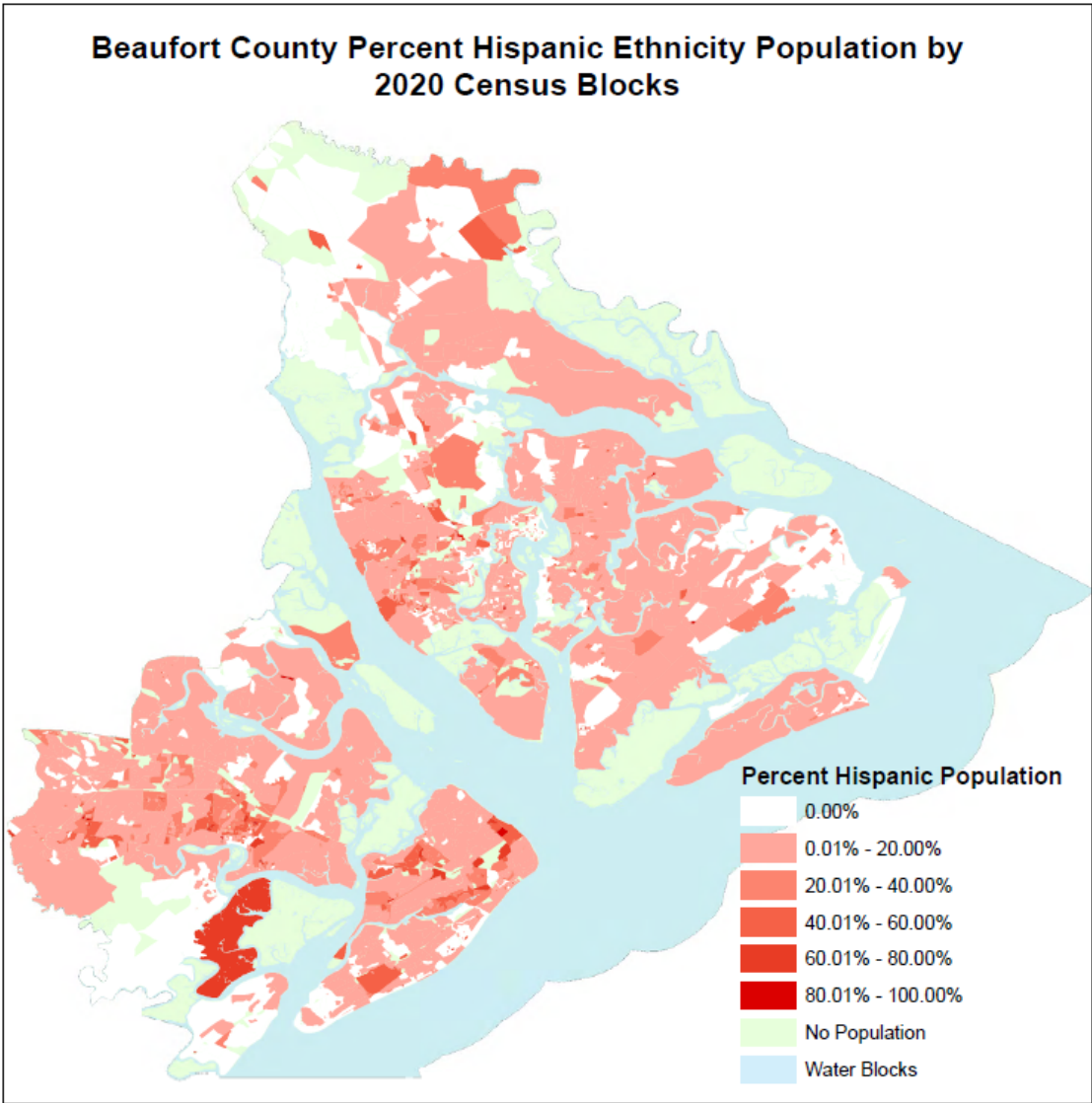
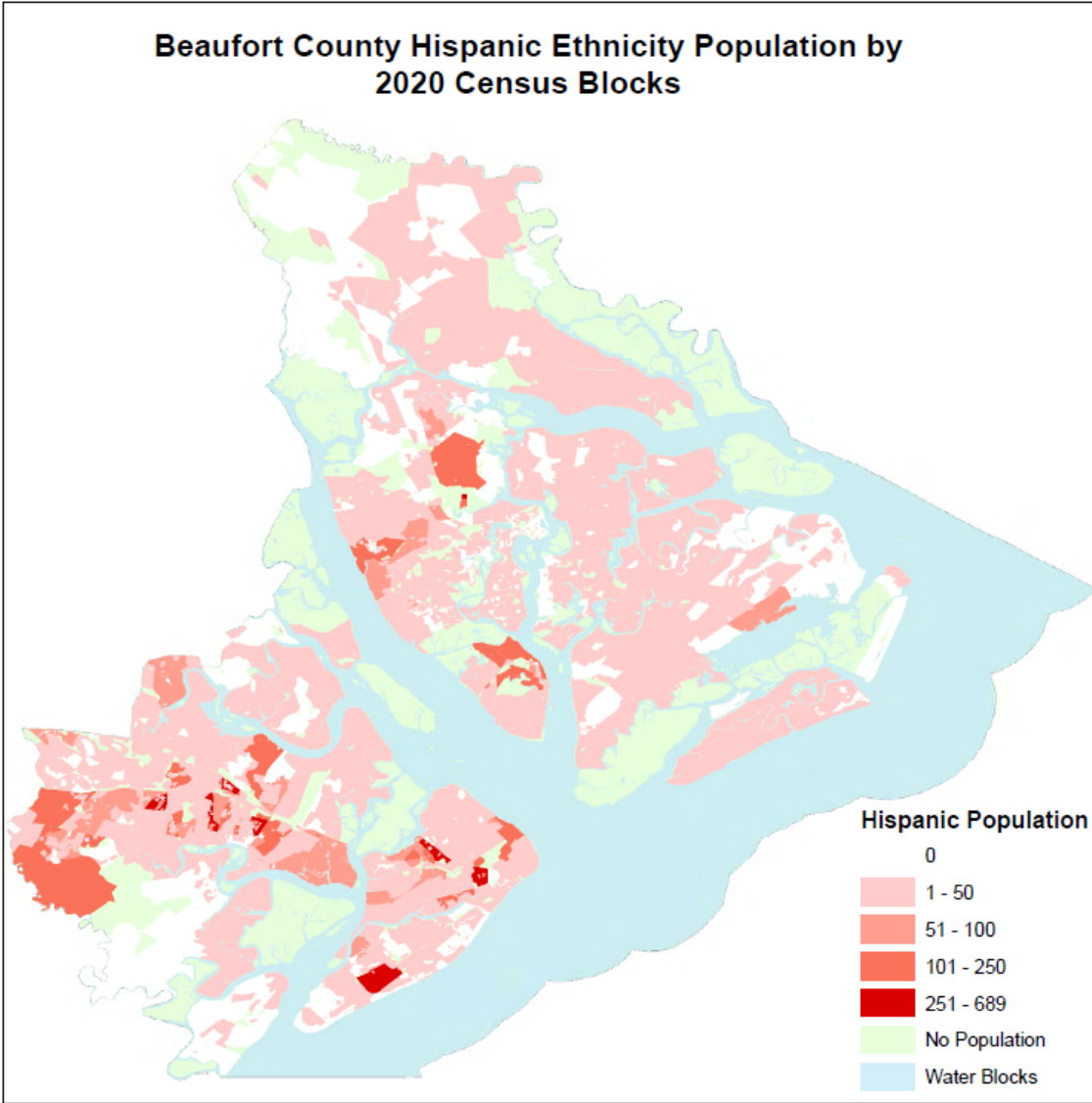
APPENDIX B - MAPS BY SINGLE RACE CATEGORIES (CORRESPONDS WITH TABLE A-2)

MAPS BY SINGLE RACE CATEGORY - WHITE



MAPS BY SINGLE RACE CATEGORY - BLACK





APPENDIX C - VOTING ANALYSIS, HOMOGENEOUS PRECINCT ANALYSIS

SC Results for Last Beaufort County Council Election by Race

County Council District	Registered & Voted Last 5 Years	Percent White Registered Voters	Percent Black Registered Voters	Percent Other Registered Voters	Percent Votes for Winning Candidate	Winning Party	Total County District Voters	Party Ran Unopposed
1	Has Voted Last 5 Years	37.07%	59.50%	3.43%	96.36%	DEM	4481	.
1	Has Not Voted Last 5 Years	34.40%	58.78%	6.82%	.		.	.
2	Has Voted Last 5 Years	88.25%	8.92%	2.83%	92.15%	DEM	433	.
2	Has Not Voted Last 5 Years	81.80%	10.98%	7.23%	.		.	.
3	Has Voted Last 5 Years	47.56%	49.68%	2.76%	95.21%	DEM	4430	.
3	Has Not Voted Last 5 Years	41.31%	51.93%	6.76%	.		.	.
4	Has Voted Last 5 Years	77.87%	17.28%	4.85%	96.30%	DEM	243	.
4	Has Not Voted Last 5 Years	69.47%	21.12%	9.41%	.		.	.
5	Has Voted Last 5 Years	76.60%	18.01%	5.39%	89.81%	REP	5183	.
5	Has Not Voted Last 5 Years	69.12%	19.93%	10.95%	.		.	.
6	Has Voted Last 5 Years	94.31%	3.15%	2.54%	60.00%	REP	10	.
6	Has Not Voted Last 5 Years	89.72%	4.98%	5.30%	.		.	.
7	Has Voted Last 5 Years	87.19%	6.21%	6.60%	64.56%	REP	11707	.
7	Has Not Voted Last 5 Years	80.89%	8.16%	10.94%	.		.	.
8	Has Voted Last 5 Years	96.05%	1.73%	2.22%	71.43%	REP	7	.
8	Has Not Voted Last 5 Years	90.59%	3.30%	6.11%	.		.	.
9	Has Voted Last 5 Years	83.30%	9.68%	7.02%	60.33%	DEM	300	.
9	Has Not Voted Last 5 Years	75.82%	11.40%	12.78%	.		.	.
10	Has Voted Last 5 Years	82.20%	12.38%	5.42%	.		.	.
10	Has Not Voted Last 5 Years	73.64%	15.36%	11.00%	.		.	.
11	Has Voted Last 5 Years	96.61%	1.45%	1.95%	.		.	.
11	Has Not Voted Last 5 Years	94.14%	2.03%	3.83%	.		.	.

APPENDIX D - VOTING ANALYSIS, BIVARIATE ECOLOGICAL REGRESSION ANALYSIS

