



Beaufort County Public Works
Stormwater Infrastructure
Project Summary

Project Summary: Wallace Road

Activity: Routine/Preventive Maintenance

Duration: 08/03/2018 - 04/05/2021

Narrative Description of Project:

Project improved 2,127 L.F. of drainage system. Dewatered pond to correct elevation. Grubbed and cleared 668 L.F. of channel. Constructed 121 L.F. and reconstructed 130 L.F. of channel. Cleaned out 212 L.F. of channel. Extended 8 L.F. and installed 988 L.F. of channel pipe. Installed (1) crossline pipe, (1) driveway pipe, (2) catch basins and asphalt. Jetted (2) crossline pipes. Installed rip rap and hydroseeded for erosion control.

2019-001 / Wallace Road	Labor Hours	Labor Cost	Equipment Cost	Material Cost	Contractor Cost	Indirect Cost	Total Cost
AUDIT / Audit Project	26.00	\$803.00	\$0.00	\$0.00	\$0.00	\$483.58	\$1,286.58
BKFILL / Back Fill	36.00	\$744.50	\$156.12	\$16.22	\$0.00	\$462.46	\$1,379.30
CBINS / Catch basin - installed	176.00	\$3,626.32	\$546.77	\$2,750.54	\$0.00	\$2,533.28	\$9,456.91
CCO / Channel - cleaned out	48.00	\$979.12	\$194.93	\$12.92	\$0.00	\$748.08	\$1,935.05
CCON / Channel - constructed	48.00	\$1,004.16	\$338.07	\$54.00	\$0.00	\$607.04	\$2,003.27
CGRB / Channel - grubbed	210.00	\$4,368.15	\$1,825.40	\$350.41	\$0.00	\$2,852.30	\$9,396.26
CHPEX / Channel Pipe - Extended	40.00	\$827.76	\$155.67	\$127.86	\$0.00	\$469.12	\$1,580.41
CLJS / Cleaned up jobsite	32.00	\$674.32	\$51.48	\$30.42	\$0.00	\$211.68	\$967.90
CLPI / Crossline Pipe - Installation	56.00	\$1,155.12	\$165.92	\$421.13	\$0.00	\$741.44	\$2,483.61
CLPJT / Crossline Pipe - Jetted	22.00	\$486.09	\$421.52	\$91.00	\$0.00	\$258.83	\$1,257.44
CPI / Channel Pipe - Installation	631.00	\$13,183.47	\$3,920.13	\$10,018.62	\$0.00	\$8,085.77	\$35,207.99
CPRE / Channel Pipe - Reinstalled	88.00	\$1,835.72	\$380.31	\$642.31	\$0.00	\$1,065.28	\$3,923.62
DEBREM / Debris Removal - Jobsite	205.00	\$5,764.40	\$2,163.01	\$327.07	\$0.00	\$2,973.50	\$11,227.98
DPINS / Driveway Pipe - Installed	48.00	\$986.64	\$110.70	\$364.51	\$0.00	\$577.76	\$2,039.61
DWP / Dewatered Pond	186.00	\$3,879.46	\$406.63	\$86.66	\$0.00	\$2,357.52	\$6,730.27
GDT / Grind and dispose of trees	30.00	\$862.80	\$211.00	\$87.03	\$0.00	\$516.20	\$1,677.03
HAUL / Hauling	690.00	\$15,547.29	\$10,267.85	\$18,445.58	\$0.00	\$7,341.26	\$51,601.98

Continued on the next page

2022-550 / Rivers End Subdivision cont'd

	Labor Hours	Labor Cost	Equipment Cost	Material Cost	Contractor Cost	Indirect Labor	Total Cost
HYDR / Hydroseeding	96.00	\$1,995.44	\$284.47	\$426.76	\$0.00	\$1,242.64	\$3,949.31
NONPRO / Non-Professional Services	0.00	\$0.00	\$0.00	\$0.00	\$32,595.00	\$0.00	\$32,595.00
PM / Ponds - Maintenance	114.00	\$2,368.17	\$449.17	\$94.89	\$0.00	\$1,351.62	\$4,263.85
PP / Project Preparation	235.00	\$5,064.85	\$1,045.70	\$247.01	\$0.00	\$2,332.30	\$8,689.86
PROFS / Professional Services	0.00	\$0.00	\$0.00	\$0.00	\$11,300.00	\$0.00	\$11,300.00
PRRECON / Project Reconnaissance	6.00	\$122.76	\$10.80	\$6.63	\$0.00	\$102.12	\$242.31
RRI / Rip Rap - Installed	108.00	\$2,864.52	\$367.72	\$1,033.12	\$0.00	\$1,532.72	\$5,798.08
SD / Soft Digging	32.00	\$701.64	\$494.16	\$81.93	\$0.00	\$404.84	\$1,682.57
SG / Shoot Grade	86.00	\$2,025.00	\$232.73	\$59.92	\$0.00	\$1,320.60	\$3,638.25
STAGING / Staging Materials/Equipment	28.00	\$740.39	\$68.95	\$21.60	\$0.00	\$361.34	\$1,192.28
UC / Utility Coordination	2.50	\$61.75	\$0.00	\$0.00	\$0.00	\$33.08	\$94.83
UTLOC / Utility locates	53.50	\$1,165.80	\$76.68	\$16.06	\$0.00	\$798.87	\$2,057.41
Grand Total	3,333.00	\$73,838.64	\$24,345.89	\$35,814.20	\$43,895.00	\$41,765.23	\$219,658.96

Before

(No Picture Available)

During



After





Project: Wallace Road Map #1

Activity: Drainage Improvement

Project #: 2019-001

Township/SW Dist: Lady's Island/7

Completed: April 2021

Legend

Drainage Type

- Access Pipe
- Bleeder Pipe
- Channel Pipe
- Channel
- Stream
- Crossline Pipe
- Driveway Pipe
- Lateral
- Lateral Pipe
- River
- Road Pipe
- Roadside
- Roadside Pipe

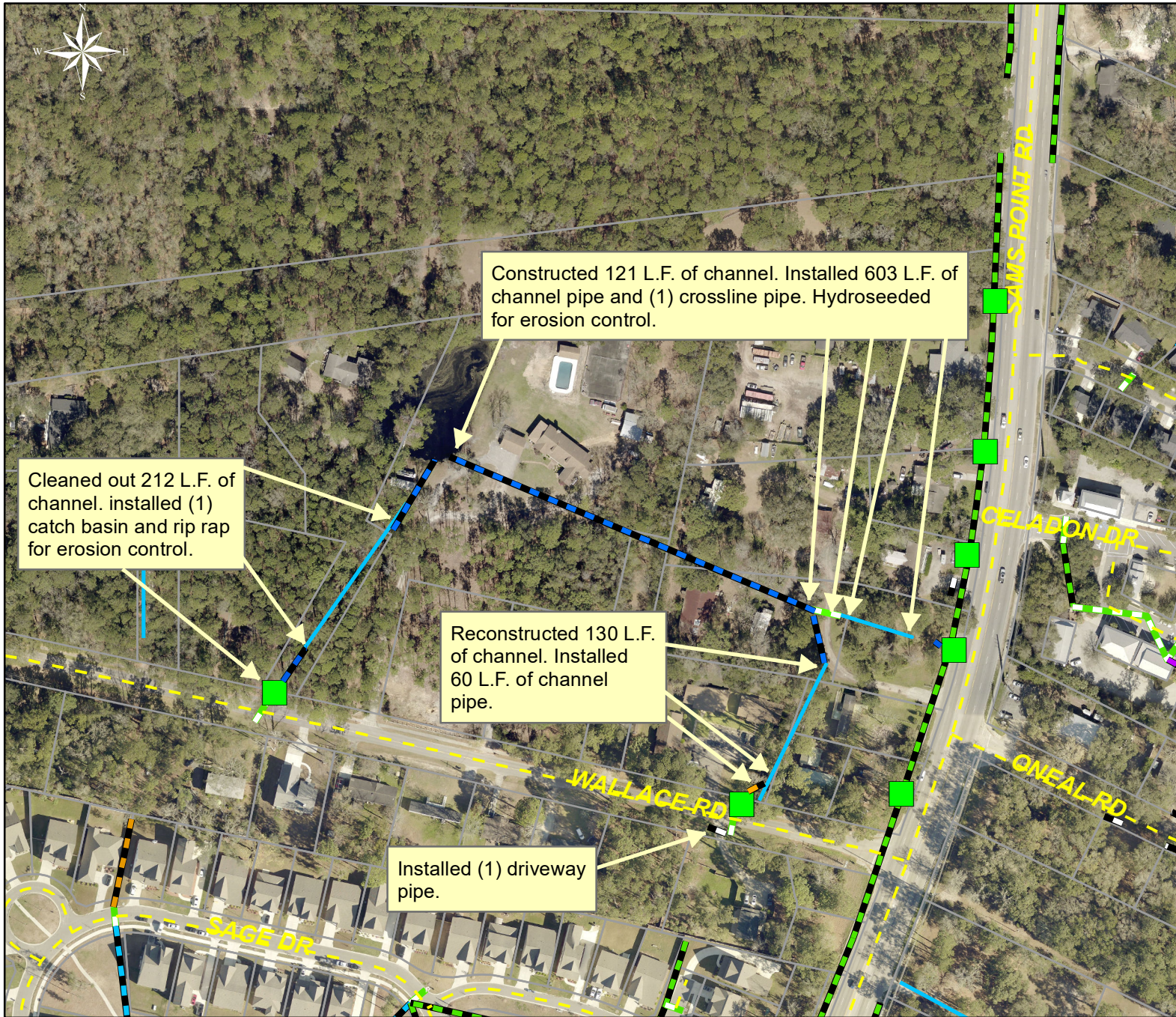


1 inch = 210 feet

Prepared By: BC Stormwater Management Utility

Date Print: 03/14/23

File: C:\esproject summaries map\Wallace Road Map #1_2019-001



Project: Wallace Road Map #2

Activity: Drainage Improvement

Project #: 2019-001

Township/SW Dist: Lady's Island/7

Completed: April 2021

Legend	
Drainage Type	
	Access Pipe
	Bleeder Pipe
	Channel Pipe
	Channel
	Stream
	Crossline Pipe
	Driveway Pipe
	Lateral
	Lateral Pipe
	River
	Road Pipe
	Roadside
	Roadside Pipe



1 inch = 210 feet

Prepared By: BC Stormwater Management Utility

Date Print: 04/06/21

File: C:\esproject summaries map\Wallace Road Map #2_2019-001



Project: Wallace Road Map #3

Activity: Drainage Improvement

Project #: 2019-001

Township/SW Dist: Lady's Island/7

Completed: April 2021