



Beaufort County Public Works
Stormwater Infrastructure
Project Summary

Project Summary: Sheldon Tree Removal - Kinloch Road and Page Point Bluff.

Activity: Routine/Preventive Maintenance

Duration: 07/20/2022 - 08/22/2022

Narrative Description of Project:

Removed fallen trees from roadside ditch and workshelf.

2023-415/Sheldon Tree Removal

	Labor Hours	Labor Cost	Equipment Cost	Material Cost	Contractor Cost	Indirect Labor	Total Cost
AUDIT / Audit Project	1.00	\$32.74	\$0.00	\$0.00	\$0.00	\$20.21	\$52.95
HAUL / Hauling	8.00	\$258.04	\$152.48	\$150.21	\$0.00	\$85.28	\$646.01
RMTR / Remove trees-roads	12.00	\$379.02	\$85.88	\$22.65	\$0.00	\$233.96	\$721.51
RMTRW / Remove trees - Workshelf	16.00	\$447.24	\$149.14	\$52.20	\$0.00	\$202.08	\$850.66
Grand Total	37.00	\$1,117.04	\$387.50	\$225.06	\$0.00	\$541.53	\$2,271.13

(Before)

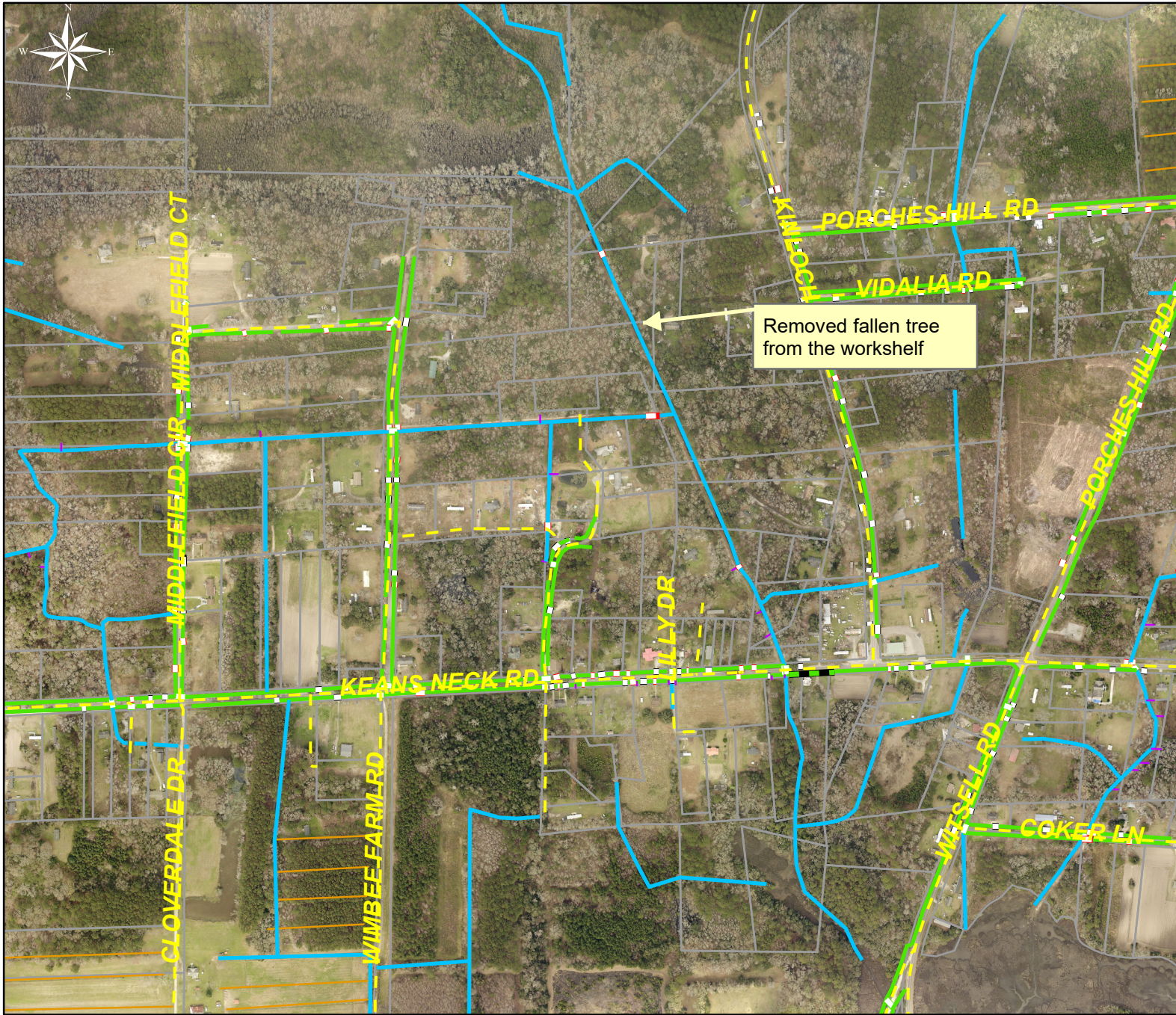


(During)



(After)





Project: Sheldon Tree Removal - Kinloch Road Map #1

Activity: Routine/ Preventive Maintenance

Project #: 2023-415

Township/SW Dist: Sheldon/5

Completed: August 2022

Legend

- Drainage Type**
- Access Pipe
 - Bleeder Pipe
 - Channel Pipe
 - Channel
 - Stream
 - Crossline Pipe
 - Driveway Pipe
 - Lateral
 - Lateral Pipe
 - River
 - Road Pipe
 - Roadside
 - Roadside Pipe

0 115230 460 690 920 Feet

1 inch = 670 feet

Prepared By: BC Stormwater Management Utility

Date Print: 01/31/23

File: C:\project summaries map\Sheldon Tree Removal Map 1_2023-415



Project: Sheldon Tree Removal - Paige Point Bluff Map #2

Activity: Routine/ Preventive Maintenance

Project #: 2023-415

Township/SW Dist: Sheldon/5

Completed: August 2022

Legend

- Drainage Type**
- Access Pipe
 - Bleeder Pipe
 - Channel Pipe
 - Channel
 - Stream
 - Crossline Pipe
 - Driveway Pipe
 - Lateral
 - Lateral Pipe
 - River
 - Road Pipe
 - Roadside
 - Roadside Pipe

0 150300 600 900 1,200 Feet

1 inch = 830 feet

Prepared By: BC Stormwater Management Utility

Date Print: 01/31/23

File: C:\project summaries map\Sheldon Tree Removal Map 2_2023-415