



Beaufort County Public Works
Stormwater Infrastructure
Project Summary

Project Summary: Cherokee Farms Road Channel and Canavan Place

Activity: Routine/Preventive Maintenance

Duration: 08/15/2022 - 11/14/2022

Narrative Description of Project:

Project improved 3,054 L.F. of drainage system. Cleaned out 1,185 L.F. of roadside ditch and 1,869 L.F. of channel.

2023-506 / Cherokee Farms Road	Labor Hours	Labor Cost	Equipment Cost	Material Cost	Contractor Cost	Indirect Cost	Total Cost
AUDIT / Audit Project	3.00	\$98.22	\$0.00	\$0.00	\$0.00	\$60.63	\$158.85
CCO / Channel - cleaned out	80.00	\$2,547.49	\$235.34	\$435.35	\$0.00	\$1,572.52	\$4,790.70
DITCHI / Ditch - Inspection	24.00	\$630.99	\$34.80	\$40.56	\$0.00	\$389.52	\$1,095.87
HAUL / Hauling	40.00	\$1,264.47	\$762.40	\$475.95	\$0.00	\$780.48	\$3,283.30
IUL / Infrastructure Utility Locating	2.00	\$86.76	\$0.00	\$0.00	\$0.00	\$53.56	\$140.32
RSDCL / Roadside Ditch - Cleanout	36.00	\$1,010.00	\$263.31	\$169.62	\$0.00	\$516.20	\$1,959.13
Grand Total	185.00	\$5,637.93	\$1,295.85	\$1,121.48	\$0.00	\$3,372.91	\$11,428.17

Before



During



After





Project: Cherokee Farms Road Channel and Canavan Place Map#1

Activity: Routine/ Preventive Maintenance

Project #: 2023-506

Township/SW Dist: Port Royal Island/6

Completed: November 2022

Legend	
Drainage Type	
	Access Pipe
	Bleeder Pipe
	Channel Pipe
	Channel
	Stream
	Crossline Pipe
	Driveway Pipe
	Lateral
	Lateral Pipe
	River
	Road Pipe
	Roadside
	Roadside Pipe

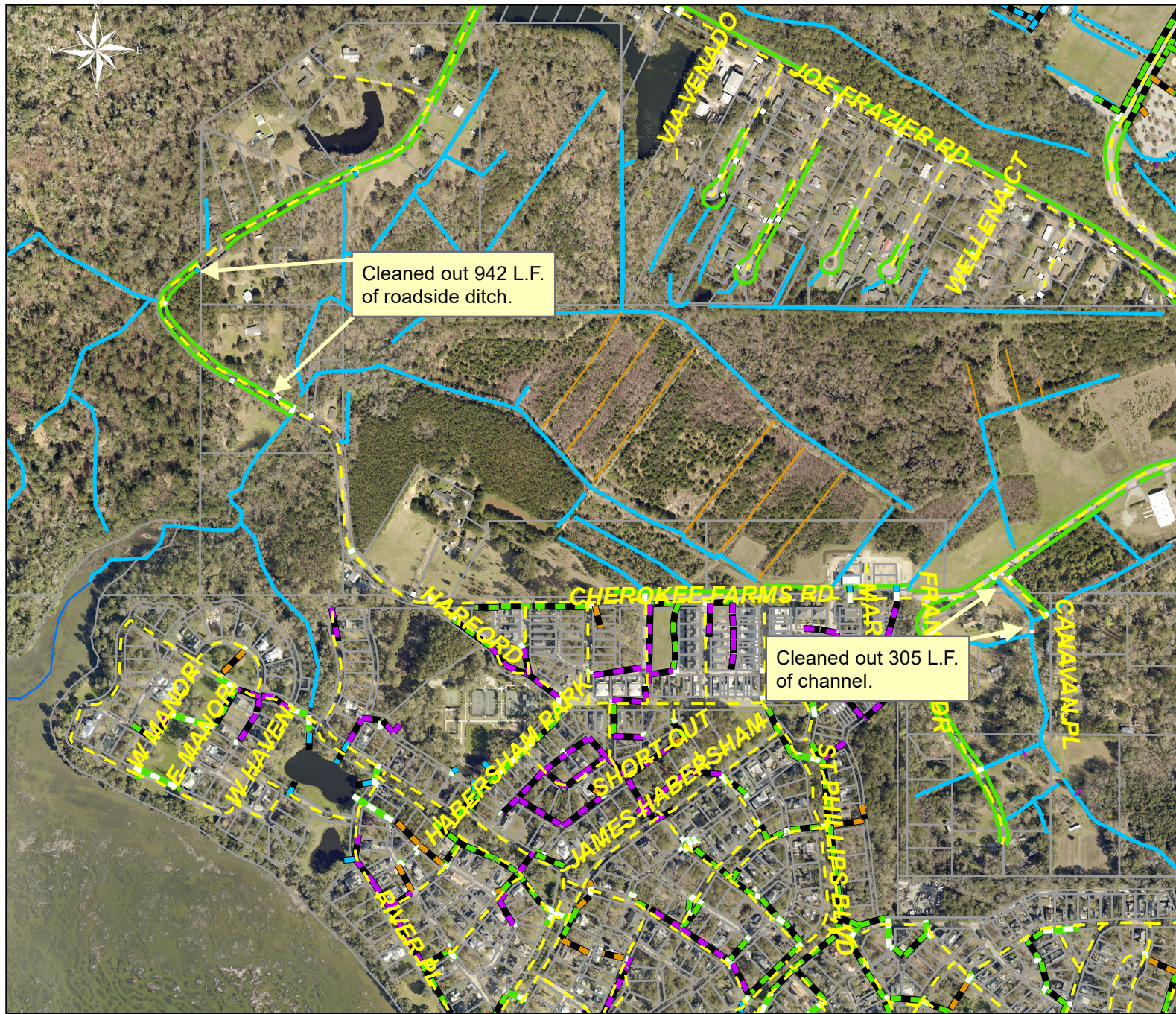


1 inch = 210 feet

Prepared By: BC Stormwater Management Utility

Date Print: 02/08/23

File: C:\esproject summaries map\Cherokee Farms Road and Canavan Place Map#1_2023-506



Project: Cherokee Farms Road Channel and Canavan Place Map#2

Activity: Routine/ Preventive Maintenance

Project #: 2023-506

Township/SW Dist: Port Royal Island/6

Completed: November 2022

Legend	
Drainage Type	
	Access Pipe
	Bleeder Pipe
	Channel Pipe
	Channel
	Stream
	Crossline Pipe
	Driveway Pipe
	Lateral
	Lateral Pipe
	River
	Road Pipe
	Roadside
	Roadside Pipe

Cleaned out 942 L.F. of roadside ditch.

Cleaned out 305 L.F. of channel.

0 140 280 560 840 1,120 Feet

1 inch = 670 feet

Prepared By: BC Stormwater Management Utility

Date Print: 02/08/23

File: C:\esproject summaries map\Cherokee Farms Road and Canavan Place Map#2_2023-506