



Lowcountry Council of Governments

Phone (843) 726-5536
Fax (843) 726-5165
Email: office@lowcountrycog.org
Website: www.lowcountrycog.org

PO Box 98
Yemassee, SC 29945-0098
Delivery Address: 634 Campground Rd.
Office at Point South: I-95 Exit 33 at US Hwy. 17

AGENDA - Revised
BOARD OF DIRECTORS MEETING
THURSDAY, June 25, 2015
6:30 P.M.
POINT SOUTH, SOUTH CAROLINA

Fellowship will begin at 6:00 p.m. Proxy form attached if you are unable to attend.

1. Call to Order
 - 1.1. Pledge of Allegiance
 - 1.2. Invocation
 - 1.3. Introduction of Guests and Staff
 - Action 1.4. Approval of May 28, 2015 Minutes [attachment]
 - 1.5. Proxies

2. Presentation
 - 2.1. Beaufort Area Joint Land Use Study (JLUS) [attachment] – Ginnie Kozak
 - 2.2. Hurricane Season – Brad Samuel, SCANA
 - 2.3. SCDOT Project Progress Report – Joy Riley, SCDOT

- Action 3. Resolution
 - 3.1. Resolution No. 2015/02: *A Resolution of the Board of Directors of the Lowcountry Council of Governments in Support of Marine Corps Air Station Beaufort and Marine Corps Recruit Depot Parris Island and Implementation of the Recommendations of the 2015 Joint Land Use Study* [attachment] – Ginnie Kozak

4. Unfinished Business

- Action 5. New Business
 - 5.1. FY2015-2016 Agency Budget [attachment] – Sabrena Graham and Sherry Smith
The proposed LCOG budget for the upcoming fiscal year is set at \$6.4M. The Executive Committee reviewed it in detail and recommends approval.
 - Action 5.2. Election of Board Officers – Nominating Committee Chairman
The Nominating Committee will recommend a slate of officers for the upcoming year. Nominations may also be made from the floor.

6. Reports
 - 6.1. May Finance Report [attachment] – Sherry Smith
 - 6.2. Community and Economic Development Report [attachment] – Michelle Knight
 - 6.3. 208 Report [attachment] – *For information*
 - 6.4. Directors Report – Sabrena Graham

7. Council Time

- Action 8. Adjourn

9. Caucuses

Members will caucus by county to select one At-Large Executive Committee member and one member to attend the NADO Annual Training Conference to be held October 24-27 in New Orleans

LOWCOUNTRY COUNCIL OF GOVERNMENTS
BOARD OF DIRECTORS MEETING
May 28, 2015
6:30 p.m.

MINUTES

	<u>PRESENT:</u>	<u>ABSENT:</u>
BEAUFORT COUNTY:	Philip (Phil) Cromer Gerald Dawson Brian Flewelling Herbert Glaze Mary Beth Heyward Bill McBride Joseph McDomick Jerry Stewart	Marc A. Grant Alice Howard (proxy to G. Dawson) Lisa Sulka (proxy to Chair)
COLLETON COUNTY:	Esther S. Black Bobby Bonds Joseph Flowers Thomas (Tommy) Mann Evon Robinson Gene Whetsell	Jane Darby
HAMPTON COUNTY:	Frankie Bennett James (Pete) Hagood Travis Mixson Nat Shaffer	Charles (Buddy) Phillips (proxy to Chair)
JASPER COUNTY:	Henry Etheridge Henry Lawton, Sr. Joey Malphrus Gwen Johnson Smith	Carolyn Kassel (proxy to chair)
GUESTS: Brad Samuel, SCANA Corporation; Bill Tomes, Public Management Consultant		
STAFF: Hank Amundson, Sabrena Graham, Michelle Knight, Ginnie Kozak, Connie Schroyer, Sherry Smith		

1. Call to Order - Chairman Shaffer called the meeting to order at 6:33 p.m.
 - 1.1. Pledge of Allegiance – Chairman Shaffer led the Pledge of Allegiance
 - 1.2. Invocation – Rev. Robinson led the Invocation
 - 1.3. Introduction of Guests and Staff
 - 1.4. Welcome New Member – Chairman Shaffer welcomed Beaufort County Council Member Herbert Glaze to the board.
 - 1.5. Approval of April 23, 2015 Minutes –
ACTION: Moved by Joseph McDomick, seconded by Mary Beth Heyward to approve minutes as presented. Motion carried unanimously.
 - 1.6. Proxies – Proxies presented by the Executive Director included Alice Howard to Gerald Dawson; Lisa Sulka, Buddy Phillips and Carolyn Kassel to the chair. The meeting proceeded after determining a quorum was present.

2. Presentation

- 2.1. Executive Committee Planning Retreat Report [attachment] - Chairman Shaffer recognized Dr. Bill Tomes, Public Management and Leadership Development Consultant, to present the Lowcountry Council of Governments Executive Committee Planning Retreat Summary which took place on May 7, 2015.

Dr. Tomes began the presentation by highlighting the role of the organization and its board members as outlined in the enabling legislation for regional councils; Title 6, Chapter 7, Article 3 of the South Carolina Code of Laws. There are three main activities for regional councils; 1) to coordinate and promote cooperative programs in the region; 2) prepare studies and recommendations on the common interest of the participating governments; 3) provide technical assistance to members of local governments. Specifically, the board is to provide policy leadership for the organization through strategic framework, budgeting preparation and oversight. The board shall also monitor organizational performance by assessing the goals of the organization, evaluating the performance of the executive director and by building and sustaining linkages to stakeholders. Board members have the power and are expected to influence non-members for the good of the organization. Effective boards have rules and procedures for conducting meetings. They allow and encourage communication among its members and speak with one voice. An effective board supports decisions that better the region as a whole. The executive director has the role of directing the policies and directives set forth by the board, managing the staff and the processes of the day-to-day operations, and in sharing administrative financial reports.

Dr. Tomes then reported on the activities and outcome of the planning retreat. Advance copies of the summary were sent to board members and are attached to serve as the official record; and which includes the Vision Statement and the 2015-2016 Goals and Strategies.

On page one of the summary, second bullet point of the liabilities, Mr. McDomick commented that "crime and drug use among youth" was not a liability exclusively of youth, but a liability of all citizens in general. A consensus of the board agreed. Dr. Tomes will edit the summary and redistribute.

ACTION: Moved by Joe Flowers, seconded by Joseph McDomick to approve the summary with aforementioned edit. Motion carried unanimously.

3. Old Business

- 3.1. FY2014-2015 Agency Budget Revisions [attachment] – Sherry Smith presented the revised budget for the current year adjusting for unknown revenues and expenditures incurred during the year. Copies were distributed in meeting packets and the major changes were reviewed by the finance director. The budget totals \$6.9M, an increase of approximately \$275,000 from the original budget. The revised contingency increased by approximately \$12,000. Specific notes are as follows:

- The estimated contingency in operating funds increased from \$55,621 to \$67,896
- The contingency for salary increases has been zeroed out and added back to the operating funds contingency. The line item was not used.
- \$10,000 had been budgeted for miscellaneous local expenses associated with a new director search. Very little was spent.

Sabrena Graham clarified that the budget increase of \$275,000 was from additional funds that the COG already had or received.

ACTION: Moved by Joe Flowers, seconded by Evon Robinson to accept the Agency Budget Revisions as reported. Motion carried unanimously.

1. New Business

4.1 Appointment of Nominating Committee – Chairman Shaffer appointed Frankie Bennett (H), Henry Etheridge (J), Mary Beth Heyward (B), and Gene Whetsell (C) to the Nominating Committee who will propose the slate of 2015-2016 board officers during the June Board Meeting. There were no objections.

5. Reports

5.1. April Finance Report [attachment] – Sherry Smith reviewed the April Finance Report. The report does not reflect the budget revisions as presented in Item 3.1. The revenues over expenditures for the period ending April 2015 is at \$56,252, reflecting 93% of the year-to-date budget expended. Next month when expenditures are posted against the revised budget, the variances that are severely over or under and the percentage of expended budget will align within the norm. Accounts Receivables and Accounts Payables continue to be monitored closely to ensure solvency. The Finance Department is now drafting next year's budget which will be presented at the next meeting.

5.2. Community and Economic Development Report [attachment] – Copies of the report were submitted in meeting packets and submitted as written. Michelle Knight also reported that the department has completed the Clarification Memo process for the spring round of CDBG funds. Commerce has begun scoring applications with funding results hopefully released by July 1. Also submitted were the responses to the Further Consideration Letter for the current EDA application. Another EDA application will be submitted June 12th for the City of Walterboro. The fall round for CDBG will be upon us soon. Preliminary discussion among several localities in the region indicates that it will be a heavy round. If your locale is contemplating a project, you are encouraged to speak with the Community and Economic Development Department early.

5.3. Director's Report [attachment] – Sabrena Graham reminded the Executive Committee of the Budget Worksession scheduled on June 11th at 4:30 to review the upcoming budget. A final draft will be presented for the approval of the full board at the June 25th meeting. Information about the Promise Zone Designation was distributed with the Director's Report. The designation is a great opportunity to bring federal programs and federal dollars to the region in which the LCOG plans to take full advantage of. USDA will be the federal liaison with Southern Carolina Alliance as the designee. In preparation of a new website design, Mrs. Graham encouraged board member input on the attached website survey. The new office manager and executive assistant Connie Schroyer was introduced. The leadership team continues to tell LCOG's story. The team was well received at the Hampton County Municipal Association meeting and is scheduled to speak at the Kiwanis Club of Beaufort. Eager to spread the word, let Mrs. Graham know of any organization interested in learning more about the services of the COG.

5.4. 208 Report [attachment] - Copies of the report were submitted in meeting packets and submitted as written.

6. Executive Session

6.1. Personnel Matter [attachment]

ACTION: Moved by Pete Hagood, seconded by Brian Flewelling to move the board into executive session to discuss the performance evaluation of the executive director. Motion carried unanimously. The executive session convened at 7:12 p.m.

ACTION: Moved by Pete Hagood, seconded by Evon Robinson to resume open session. Motion carried unanimously. Open session resumed at 7:17 p.m.

During executive session, the board discussed its reluctance in giving a full review using the evaluation template due to the short tenure of the director. In lieu of a formal evaluation, the executive committee drafted a favorable opinion regarding the performance of the executive director as concluded to date.

ACTION: Moved by Pete Hagood, seconded by Henry Lawton to receive the opinion of the executive director's performance as recommended by the executive committee. Motion carried unanimously.

7. Council Time

During the discussion of Item 2.1 Planning Retreat Report, Philip Cromer asked what has been done in the past to communicate with the legislative delegation in regards to the needs and activity of the LCOG. There is not a formal procedure in place. The former director made relatively routine phone calls to keep the delegation abreast of activities of the Board. It was noted that a member of the delegation should be on board but that requests to fill the seat have gone mostly unanswered. Members of the delegation do receive agendas of board meetings to stay aware of the topics if they choose to attend. Mr. Cromer suggested the Board be more forward with its communication through more direct dialogue and face-to-face interaction.

8. Adjourn

With no other business to discuss, **ACTION: Moved by Pete Hagood, seconded by Brian Flewelling to adjourn the meeting. Motion carried unanimously.** The meeting adjourned at 7:21 p.m.

Copies of the agenda were distributed prior to the meeting. A notice of the meeting was posted on the LCOG bulletin board at least twenty-four hours prior to the meeting.

Respectfully submitted,

Connie Schroyer
Executive Assistant

Attachments

Beaufort Area
 Joint Land Use Study (JLUS)

June 25, 2015



Lowcountry Council of Governments

The First JLUS—Only for MCAS and a Long Process

Beaufort County, City of Beaufort, Town of Port Royal and the community worked together with MCAS Beaufort to develop strategies to manage growth and prevent the encroachment of future development around the Air Station.

- Began in October 1999, with first Steering Committee meeting
- Lowcountry COG project manager because many jurisdictions and organizations involved.
- Plan completed in August 2004 and adopted by Policy Committee (successor to Steering Committee)
- Councils of Beaufort County, City of Beaufort and Town of Port Royal adopted unanimously in September and October 2004

AICUZ Approvals Process Shorter, but Not Easy

- September to December 2006 to convince elected officials to support the Overlay Zoning, that was considered downzoning by some.
- TDR program proposed as a non-cash form of compensation for affected owners of smaller properties.

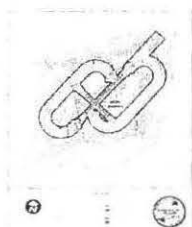
Transfer of Development Rights (TDR)

- January 2009. \$250,000 received from State of South Carolina as seed money for TDR bank.
- Fall 2009. Implementation and Management Plan preparation begins.
- Beaufort County TDR Ordinance passed June 14, 2011.
- Resolutions of support provided by City of Beaufort and Town of Port Royal.
- Consultation meetings with sending area property owner.
- Will start with smaller parcels first and target those who were "downzoned" by AICUZ.

JLUS 2015: MCAS Beaufort and MCRD Parris Island

- Update 2004 JLUS plan for MCAS
- First JLUS for PI
- Move forward with TDR Program Management
- Began February 2014, completed March 2015—on time and under budget

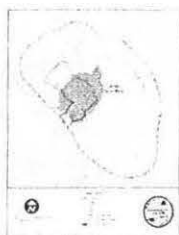
JLUS 2015—MCAS Beaufort



JLUS 2015—MCAS Beaufort

- Assessed options available to installation and local communities to further protect the mission of MCAS Beaufort and the quality of life of the civilian community.
- Community-wide Coordination
- Military Outreach
- Land Use Planning and Environmental Resources
- Military-Local Government Coordination
- Revisions to the existing overlay ordinances governing land use near the base, to reflect introduction of the F-35B
- Updating and fully implementing the Beaufort County Transferable Development Rights (TDR) program.

JLUS 2015—MCRD Parris Island



JLUS 2015—MCRD Parris Island

Impacts on the civilian community greatly minimized due to water and wetlands surrounding PI, they do affect civilians. While the waters provide a great buffer to PI from encroachment by growth and development, Northern Beaufort County is a high-growth area and additional protective measures may be needed.

General recommendations:

- Community-wide Coordination
- Military Outreach
- Land Use Planning and Environmental Resources
- Military-Local Government Coordination

For More Information

- Download the Final reports:
• <http://www.lowcountry-ilus.org/>

- Questions:
• gkozak@lowcountrycog.org



For Immediate Release

Contact: Public Affairs: 1-800-562-9308

SCE&G Uses Social Media To Connect With Customers During 2013 Hurricane Season

CHARLESTON, S.C. (June 3, 2013) – With the start of the Atlantic hurricane season, SCE&G is reminding its customers to prepare now for the possibility of a hurricane impacting South Carolina.

This year, the National Oceanic and Atmospheric Administration predicts an active Atlantic hurricane season with more and stronger hurricanes. SCE&G President of Retail Operations Keller Kissam said now is the time for customers to prepare. "Even if we don't get a direct hit, depending on the size and scope of the storm, severe weather from a hurricane can impact South Carolina customers anytime between June 1 and Nov. 30," he said.

History has shown that other than getting their lights on, the thing people want most from their utility during a lengthy power outage is communication. "People want information they can plan and act on," said Kissam. He said more customers are turning to social media channels for information during emergencies, especially on mobile devices if they lose power. SCE&G has updated its social media channels for the 2013 storm season and wants customers to be aware of these channels:

- TWITTER – www.twitter.com/scegnews
- FACEBOOK – www.facebook.com/scegnews
- FLICKR – www.flickr.com/scegnews
- YOUTUBE – www.youtube.com/scegnews

Kissam cautioned that customers should not use social channels to report outages or share personal information, including their SCE&G account number or street address, but should monitor social channels for breaking news, outage reports and other important updates from the company. "We will use these social channels to share safety tips, outage numbers, photos and videos of crews working to restore power and other news and information, such as downed power lines to avoid and generator safety reminders," he said.

Other important communications channels SCE&G customers can turn to include:

- OUTAGE MAP - SCE&G updates its interactive outage map (<http://www.sceg.com/en/storm-center/>) about every 15 minutes.
- MOBILE DEVICES - Customers can use mobile devices to report and check the status of outages at www.sceg.com/mobile.
- TEXT MESSAGING - Residential electric customer or small/medium business commercial customers can report power outages and check their outage status via text messaging using

a text-enabled cell phone/mobile device. Standard message and data rates apply. Customers must first register their cell phone number to their SCE&G account. Here's how: <http://www.sceg.com/en/storm-center/outage-text-messaging/default.htm>.

- TELEPHONE – SCE&G's customer service department is staffed 24/7.
 - For non-emergency issues: 800-251-7234.
 - For power outages or to report downed/sparking power lines: 888-333-4465
 - To report gas leaks: 800-815-0083

Kissam said one of the most important ways SCE&G prepares for the potential impact of severe storms is by managing vegetation on its system throughout the year. "We have trimmed more than 19,700 miles of trees since 2007 to enhance the reliability of our electric system," he said. The company also has approximately 400 permanent line personnel and 300 contract line personnel ready to respond to major storms or hurricanes. Additionally, SCE&G is a member of the Southeastern Electric Exchange's mutual assistance, which can increase these numbers exponentially.

One of the biggest challenges facing utilities in areas subject to hurricane activity is ensuring customers have realistic expectations about how long it may take to restore power to after a major storm or hurricane. "Recent history – Hurricanes Katrina, Irene, Sandy, etc. – suggests that the majority of customers can expect to be without power for 10-20 days, depending on the scope and severity of damage to the system," he said. "Some may have power restored sooner, but for others, it could take longer."

Kissam said SCE&G has a systematic process for restoring power after major storm. It begins with damage assessment immediately after the storm has passed. "During the first 48 hours or so, we do an initial assessment of damage to our transmission and distribution facilities," said Kissam. "This is important to allow us to efficiently get crews and materials to the areas they're most needed. As restoration work begins, there's a more comprehensive, ongoing damage assessment that could last a week or more. The priority is to restore essential services, such as hospitals, fire and police departments, water treatment facilities, emergency response agencies, etc. Our goal is to restore the greatest numbers of customers in the shortest amount of time."

More information on SCE&G's restoration process is available at SCEG.com.

SCE&G is a regulated public utility engaged in the generation, transmission, distribution and sale of electricity to approximately 673,000 customers in South Carolina. The company also provides natural gas service to approximately 325,000 customers throughout the state.

###



Project Status Report

for
LATS MPO

June 26, 2015

Counties covered in Report:

Counties: Beaufort & Jasper

- SCDOT anticipates construction to begin on approximately \$99,368,500 in transportation projects between Fiscal Year 2016-2019 in the Lowcountry Area Transportation Study Metropolitan Planning Organization area.
- This includes \$804,200 in ACT 98 funded projects.

Lowcountry COG Transportation Funding Summary		
Program	Total Mileage	Funding
Bridge - Replacement (On-System)	1.360	\$11,633,600
C Program - C Program	5.19	\$1,768,300
Interstate – Interstate Rehabilitation	10.000	\$23,162,000
Pavement Improvement & Preservation - Preservation	4.310	\$1,070,300
Pavement Improvement & Preservation - Resurfacing (Act 98)	2.780	\$804,200
Rural System Upgrade - Lowcountry	6.896	\$59,855,100
Safety Funds	1.050	\$1,075,000
TOTALS	31.586 Miles	\$99,368,500

Joy Riley, SCDOT Program Manager for the Lowcountry, rileyj@scdot.org or (803)737-1346

Beaufort County:

- SCDOT anticipates construction to begin on approximately \$17,400,100 between fiscal year 2015 and 2018.

Beaufort County Funding Summary		
Program	Total Mileage	Funding
Bridge - Replacement (On-System)	0.560	\$8,023,600
C Program - C Program	5.19	\$1,768,300
Pavement Improvement & Preservation - Preservation	4.310	\$1,070,300
Rural System Upgrade - Lowcountry	2.796	\$5,855,100
Safety Funds	1.050	\$1,075,000
TOTALS	13.906	\$17,400,100

Bridge - Replacement (On-System):

Project ID 0039102: S-79 Bridge Replacement over Jarvis Creek (0.560 Total Miles)

- Scope: Replace Bridge over Jarvis Creek, including roadwork along S-79 (Spanish Wells Road) within the Town limits of Hilton Head Island, Beaufort County. Traffic will be maintained during construction.
- Termini: S-79 S: Humane Way (local) to Thomas Cohen Drive (local)
- Anticipated Project Cost: \$8,023,600
- Anticipated Construction Cost: \$6,250,000
- Schedule: Letting is scheduled for December 2015



Total Project Cost shown reflects the estimated total value across all counties and funding sources.
 * Indicates that project is funded from multiple programs.

C Program:

Project ID P028490: Beaufort CTC Resurfacing - 14/15 (4.690 Total Miles)

- Scope: Resurface Broad River Road (S-287), Joe Frazier Road (S-40)
- Termini: S- 40 E: S-7-20 to S-7-263
S- 287 N: S-7-488 to US 21
- Anticipated Project Cost: \$1,375,700
- Anticipated Construction Cost: \$1,374,700
- Schedule: Letting is scheduled for July 2015

Pavement Improvement & Preservation – Preservation:

Project ID P028188: 2016 State Resurfacing ACT 98 Program (4.310 Total Miles)

- Scope: Resurfacing Various routes in Beaufort County
- Termini: S- 256 E: 0.04 miles SW of SC 128 to S-7-23
S- 286 E: US-21 to S-7-287
S- 323 N: S-7-322 to S-7-279
S- 624 E: US 278 to S-7-334
S- 649 N: US-21 to End State Maintenance
- Anticipated Project Cost: \$1,070,300
- Anticipated Construction Cost: \$1,070,300
- Schedule: Letting is scheduled for September 2015

Rural System Upgrade – Lowcountry:

Project ID 0041192: US21 @ US21 Business Intersection Improvement (0.409 Total Miles)

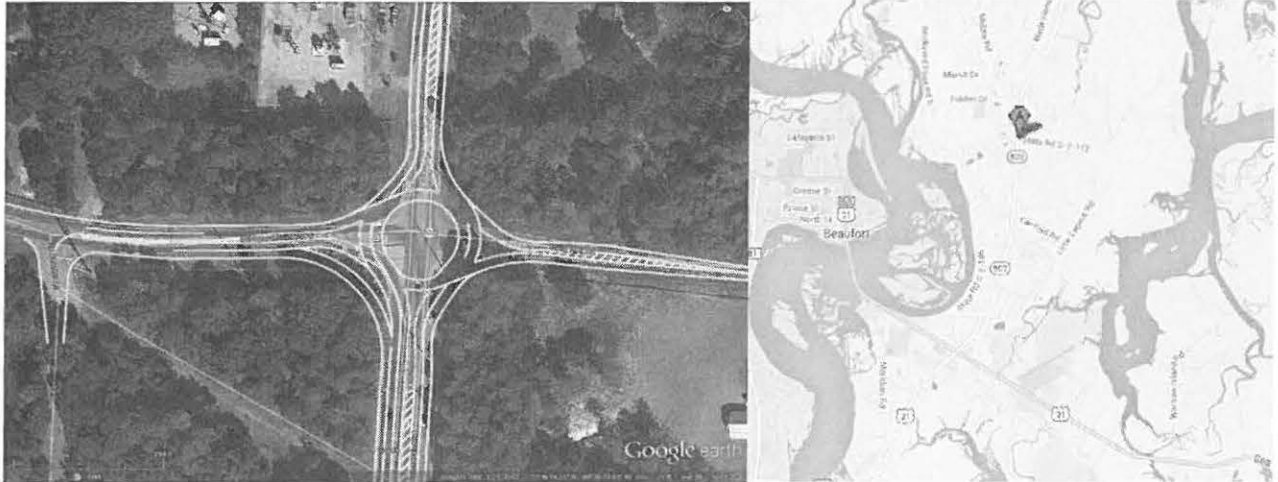
- Scope: Intersection of US-21 Business (Trask Parkway) @ US Route 21 (Parris Island Gateway) to include right-turn lane, Beaufort County.
- Termini: US-21 N: 0.1 mile South of County Shed Road to 0.1 mile West of Intersection
US-21 BUS N: Intersection to 0.03 mile N of the Intersection
- Anticipated Project Cost: \$1,072,400
- Anticipated Construction Cost: \$813,300
- Schedule: Let in April 2015; Bids rejected due to non-competitive bids. Anticipate that project will be RE-LET in October 2015. AWAITING EASEMENT & UTILITY AGREEMENT FROM BJSWA



Total Project Cost shown reflects the estimated total value across all counties and funding sources.
* Indicates that project is funded from multiple programs.

Project ID 0041799: SC-802 & Holly Hall / Brickyard Intersection (0.787 Total Miles)

- Scope: Intersection Improvement (Round-a-bout Construction) along SC Route 802 (Sam's Point Road) at S-112 (Holly Hall Road)/ S-72 (Brickyard Point Road) on Lady's Island, Beaufort County.
- Termini: SC-802 E: S-791 Doe Road to Cottage Road (local)
S-72 W: S-750 Middle Road to SC-802
S-112 E: SC-802 to 0.2 miles E of Intersection
- Anticipated Project Cost: \$3,577,400
- Anticipated Construction Cost: \$3,108,400
- Schedule: Letting is scheduled for Winter 2015-2016



Project ID 0041808: US-278 Windmill Harbour Intersection Improvement (1.600 Total Miles)

- Scope: S-772 (Blue Heron Point Road) S-298 (Jenkins Road) (Frontage Road @ Windmill Harbour)
- Termini: US-278 N
- Anticipated Project Cost: \$1,205,300
- Anticipated Construction Cost: \$1,005,300
- Schedule: Let in February 2015; Contract Awarded to; **UNDER CONSTRUCTION**- est. complete in August



Safety Funds:

Project ID P028659: US21 @ SC 170 Intersection Improvement (1.050 Total Miles)

- Scope: Intersection of US-21 @ SC Route 170 to include access management strategies that either eliminate or restrict some turning movements from driveways near the intersection, Beaufort County.
- Termini: US-21 (Parris Island Gateway): SC 170 to Ambrose Run
SC 170 E (Robert Smalls Parkway): 500 ft prior to S-761 to US 21
S-761 N: SC 170 to 800 ft N of SC 170
- Anticipated Project Cost: \$1,075,000
- Anticipated Construction Cost: \$925,000
- Schedule: Letting anticipated for Winter 2016-2017.



Locally Administered Projects - LPA (for information only – not included in summary)

Project ID 0036939: Boundary Street Re-development Project (1.501 Total Miles)

- Scope: Intersection improvement at US-21 @ SC Route 170 to include access management strategies that either eliminate or restrict some turning movements from driveways near the intersection, Beaufort County.
- Termini: US-21 Business (Boundary Street): SC 170 to Ribaut Road
SC 170 E (Robert Smalls Parkway): 0.161 miles prior to US 21 Bus intersection
- Anticipated Project Cost: \$23,806,816
- Schedule: Out for bids currently; Anticipate construction starting later this summer.

Project ID 0027274: May River Road Transportation Alternatives Project (0.600 Total Miles)

- Scope: *SIDEWALK CONSTRUCTION* and *DRAINAGE IMPROVEMENTS* along SC Route 46 (May River Rd) from S-31 (Pin Oak St) both sides to S-583 (Whispering Pines St), with continuation of sidewalk on northside of SC 46 to S-29 (Buck Island Rd), Beaufort County.
- Termini: SC 46 (May River Road): S-31 to S-583
- Anticipated Project Cost: \$891,330
- Schedule: LET by Town of Bluffton in Fall/Winter 2015

Project ID 0027276: Allison Road Connector Enhancement Project (0.260 Total Miles)

- Scope: *STREETSCAPE IMPROVEMENTS* along S-159 (Allison Road) to include Construction of (10-ft) Multi-Use Path and Drainage Improvements to connect Ribaut Road to the Spanish Moss Trail for a total of 1,405 LF within the City of Beaufort (LPA), Beaufort County.
- Anticipated Project Cost: \$747,260
- Schedule: LET by City of Beaufort in Fall/Winter 2015

Total Project Cost shown reflects the estimated total value across all counties and funding sources.

* Indicates that project is funded from multiple programs.

Jasper County:

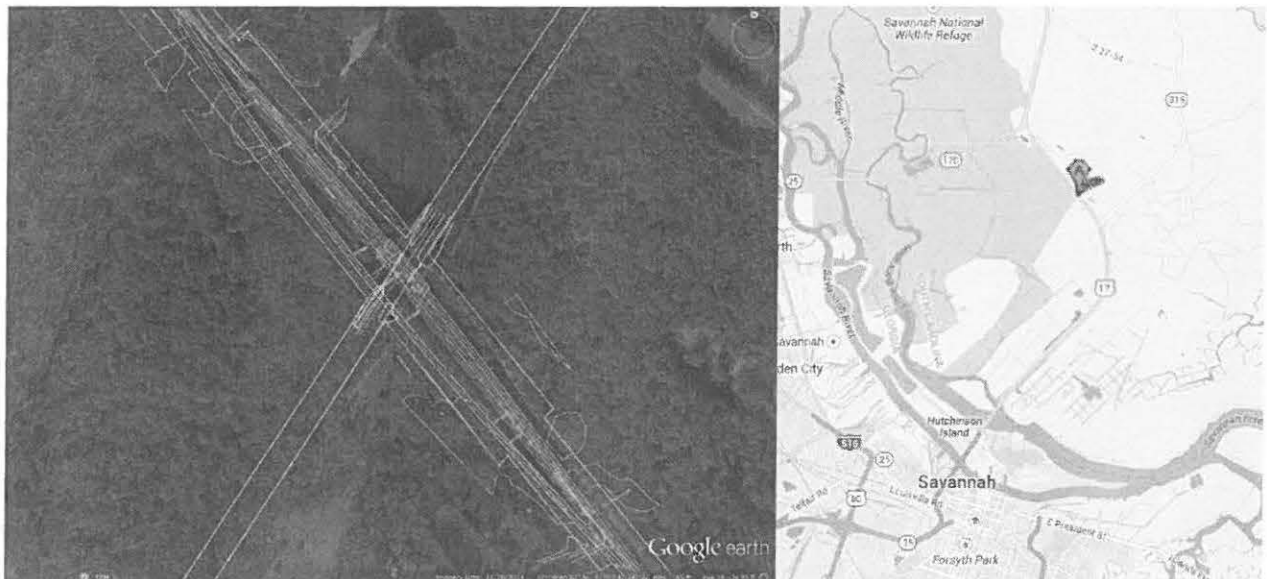
- SCDOT anticipates construction to begin on approximately \$81,968,800 between fiscal year 2015 and 2018.
- This includes \$804,200 in ACT 98 funded projects.

Jasper County Transportation Funding Summary		
Program	Total Mileage	Funding
Bridge - Replacement (On-System)	0.800	\$3,610,000
C Program - C Program	0.500	\$392,600
Interstate – Interstate Rehabilitation	10.000	\$23,162,000
Pavement Improvement & Preservation - Resurfacing (Act 98)	2.780	\$804,200
Rural System Upgrade - Lowcountry	4.100	\$54,000,000
TOTALS	18.18 miles	\$81,968,800

Bridge - Replacement (On-System):

Project ID 0039603: US-17 Bridge Replacement, Roadway Work (0.800 Total Miles)

- Scope: Removal of bridge and construction of at-grade crossing at on US-17 at MP 4.82 (S.C.L RAILROAD)
- Termini: US-17 N: 0.3 miles North of SC-315 intersection to 1.3 miles South of SC-170 intersection
- Anticipated Project Cost: \$3,610,000
- Anticipated Construction Cost: \$2,978,600
- Schedule: Letting is scheduled for Summer 2016



Total Project Cost shown reflects the estimated total value across all counties and funding sources.
 * Indicates that project is funded from multiple programs.

C Program:

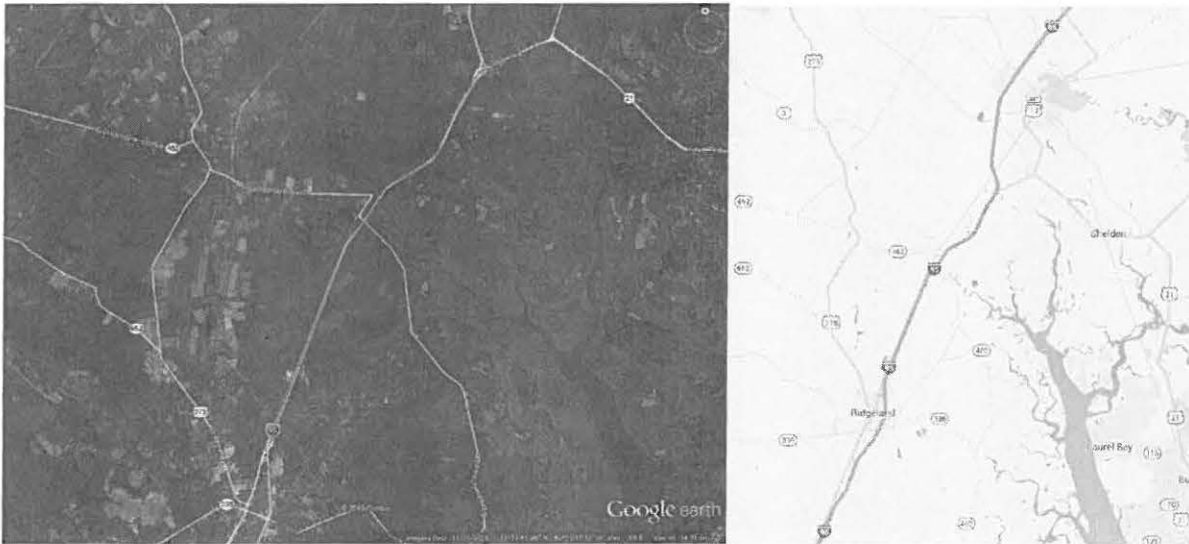
Project ID P028572: Jasper CTC - Resurfacing US-321 (0.500 Total Miles)

- Scope: Resurface Deerfield Road (US-321)
- Termini: US-321 N: 0.26 miles N of S-203 to 0.50 miles S of S-170
- Anticipated Project Cost: \$392,600
- Anticipated Construction Cost: \$392,600
- Schedule: Letting is scheduled for August 2015

Interstate – Interstate Rehabilitation:

Project ID P027551: I-95 Rehabilitation - Jasper County Section (10.000 Total Miles)

- Scope: Rehabilitation of concrete/asphalt pavement along NB/SB lanes of Interstate 95 from MP 23 to MP 33 within Jasper County.
- Termini: I-95 N: slightly north of Exit 22 to Exit 33
- Anticipated Project Cost: \$23,162,000
- Anticipated Construction Cost: \$22,062,000
- Schedule: Letting is scheduled for Winter 2016-2017



Pavement Improvement & Preservation - Resurfacing (Act 98)

Project ID P028191: 2016 State Resurfacing ACT 98 Program (2.780 Total Miles)

- Scope: 2016 NFA Resurfacing in Jasper County
- Termini: S-104 E: S-27-413 to US 321
S-269 N: S-27-243 to S-27-269
S-385 N: S-27-31 to S-27-385
S-430 E: S-27-171 to S-27-278
- Anticipated Project Cost: \$804,200
- Anticipated Construction Cost: \$804,200
- Schedule: Letting is scheduled for September 2015

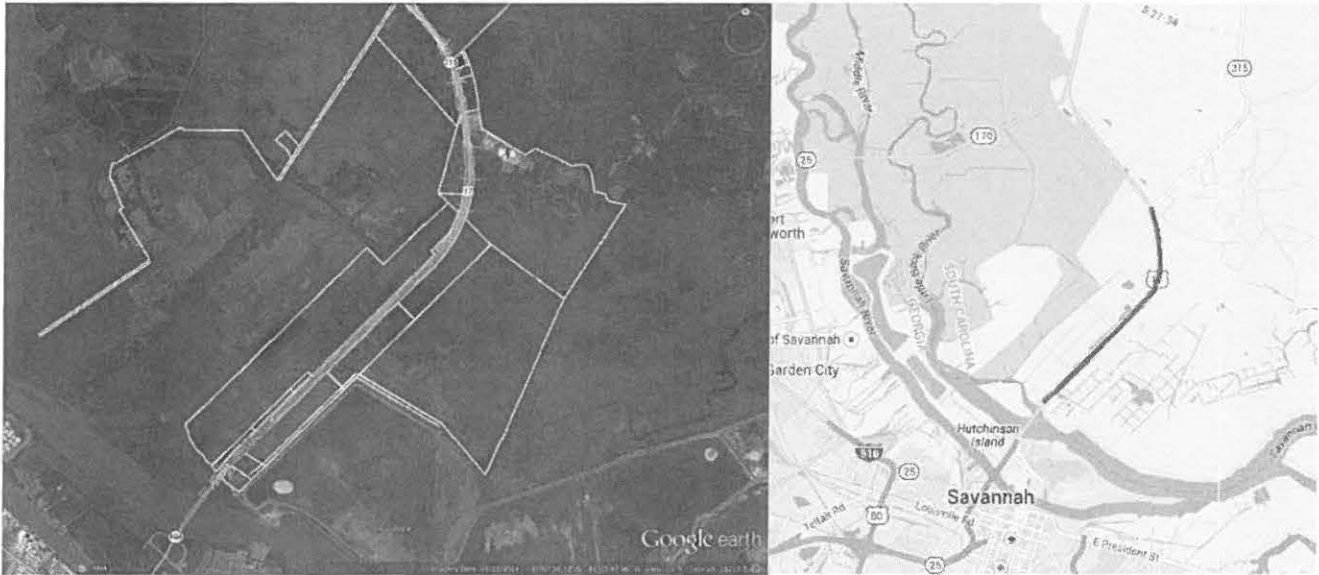
Total Project Cost shown reflects the estimated total value across all counties and funding sources.

* Indicates that project is funded from multiple programs.

Rural System Upgrade – Lowcountry:

Project ID 0039168: US-17 Widening (4.100 Total Miles)

- Scope: Widen on US 17 from a 2-lane to a 4 lane divided highway from Georgia state line to SC-315
- Termini: US-17 S (Speedway Boulevard): State line to SC-315 (S Okatie Highway)
- Anticipated Project Cost: \$54,000,000
- Anticipated Construction Cost: \$45,900,000
- Schedule: Letting is scheduled for Winter 2017-2018



Locally Administered Projects - LPA (for information only – not included in summary)

Project ID 0028310: Interstate 95 – New Interchange (Exit 3) Project (1.501 Total Miles)

- Scope: Preliminary Engineering for a new interchange on I-95 at mile-marker 3, the 4 lane widening of Purrysburg Road from I-95 to US 17, an East-West connector roadway from Purrysburg Road to US 321 and intersection improvements at US 321 and US 17 on the Northern end and at US 179 and US 17 on the Southern end, Jasper County & City of Hardeeville with assistance from Beaufort County.
- Status: Consultant is working with USACE to develop Environmental Impact Statement (EIS) & Interchange Justification Report (IJR) for review and approval by SCDOT & FHWA.
- Anticipated Project Cost: \$119,000,000 (\$48,000,000 for interchange)
- Schedule: SIB & Developer funded project – Schedule TBD based on funding availability and NEPA approvals.



Project Status Report

for
Lowcountry COG

June 25, 2015

Counties covered in Report:

Counties: Beaufort, Colleton, Hampton,
Jasper

- SCDOT anticipates construction to begin on approximately \$217,069,727 in transportation projects between Fiscal Year 2015-2019 in the Lowcountry COG area.
- This includes \$5,201,691 in ACT 98 funded projects.

Lowcountry COG Transportation Funding Summary		
Program	Total Mileage	Funding
Bridge - Replacement (On-System)	3.55	\$90,088,403
C Program - C Program	6.81	\$2,902,895
Enhancement - Rural	1.163	\$661,500
Interstate – Interstate Rehabilitation	24.000	\$41,324,000
Pavement & Reconstruction	4.55	\$1,905,300
Pavement Improvement & Preservation - Preservation	24.97	\$2,122,138
Pavement Improvement & Preservation - Resurfacing (Act 98)	19.55	\$4,638,991
Rural System Upgrade - Lowcountry	10.018	\$70,730,800
State Funds - State Funded Bridges (Act 98)	0.500	\$1,058,000
Safety Funds	1.050	\$1,075,000
Transportation Alternatives - Areas >5K & <200K	0.070	\$562,700
TOTALS	96.231 Miles	\$217,069,727

Joy Riley, SCDOT Program Manager for the Lowcountry, rileyj@scdot.org or (803)737-1346

Beaufort County:

- SCDOT anticipates construction to begin on approximately \$78,374,100 between fiscal year 2015 and 2018.

Beaufort County Funding Summary		
Program	Total Mileage	Funding
Bridge - Replacement (On-System)	1.31	\$68,497,600
C Program - C Program	4.690	\$1,375,700
Pavement Improvement & Preservation - Preservation	14.400	\$1,570,700
Rural System Upgrade - Lowcountry	2.796	\$5,855,100
Safety Funds	1.050	\$1,075,000
TOTALS	24.246	\$78,374,100

Bridge - Replacement (On-System):

Project ID 0039102: S-79 Bridge Replacement over Jarvis Creek (0.560 Total Miles)

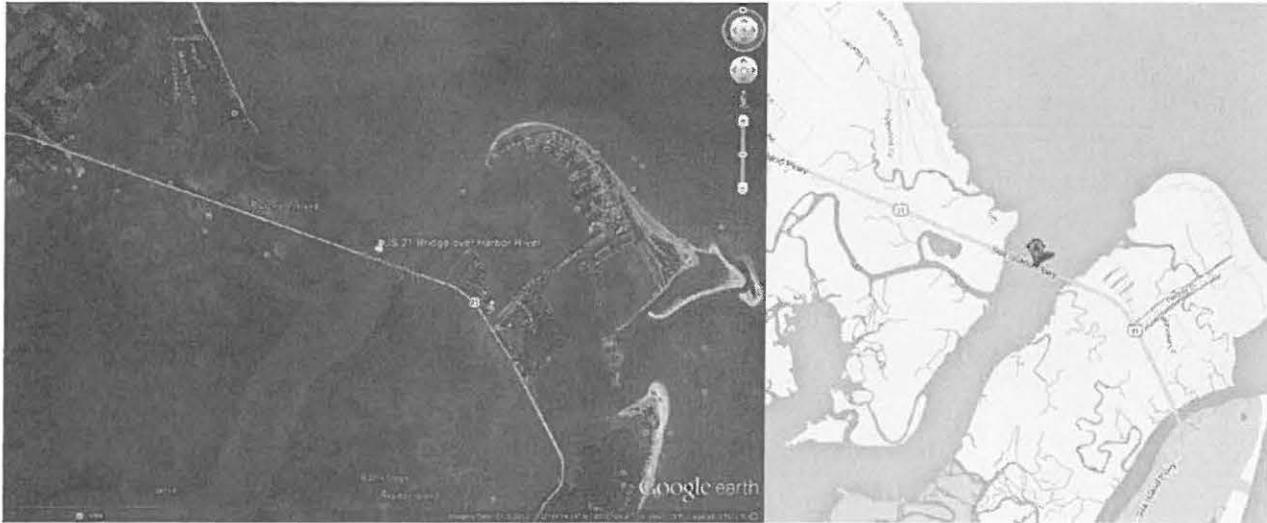
- Scope: Replace Bridge over Jarvis Creek, including roadwork along S-79 (Spanish Wells Road) within the Town limits of Hilton Head Island, Beaufort County. Traffic will be maintained during construction.
- Termini: S-79 S: Humane Way (local) to Thomas Cohen Drive (local)
- Anticipated Project Cost: \$8,023,600
- Anticipated Construction Cost: \$6,250,000
- Schedule: Letting is scheduled for December 2015



Total Project Cost shown reflects the estimated total value across all counties and funding sources.
 * Indicates that project is funded from multiple programs.

Project ID P026862: US 21 Bridge Replacement over Harbor River (0.750 Total Miles)

- Scope: Replace Bridge over Harbor River, including roadwork along US 21 (Sea Island Parkway), Beaufort County.
- Termini: US 21 over Harbor River at MP 2.64
- Anticipated Project Cost: \$60,474,000
- Anticipated Construction Cost: \$56,134,000
- Schedule: Design Build Project Delivery; RFQ is scheduled for Fall 2017



C Program:

Project ID P028490: Beaufort CTC Resurfacing - 14/15 (4.690 Total Miles)

- Scope: Resurface Broad River Road (S-287), Joe Frazier Road (S-40)
- Termini: S- 40 E: S-7-20 to S-7-263
S- 287 N: S-7-488 to US 21
- Anticipated Project Cost: \$1,375,700
- Anticipated Construction Cost: \$1,374,700
- Schedule: Letting is scheduled for July 2015

Pavement Improvement & Preservation – Preservation:

Project ID P028386: 2016 NFA Preservation Program (10.090 Total Miles)

- Scope: 2016 NFA Preservation in Beaufort County
- Termini: S- 33 N: 0.04 miles NW of US-17 to 0.09 miles W of S-900
S- 153 N: S-7-151 to SC-281
S- 617 N: S-7-461 to Dead End
S- 770 E: US-21 to S-7-520
- Anticipated Project Cost: \$500,400
- Anticipated Construction Cost: \$500,400
- Schedule: Letting is scheduled for June 2015

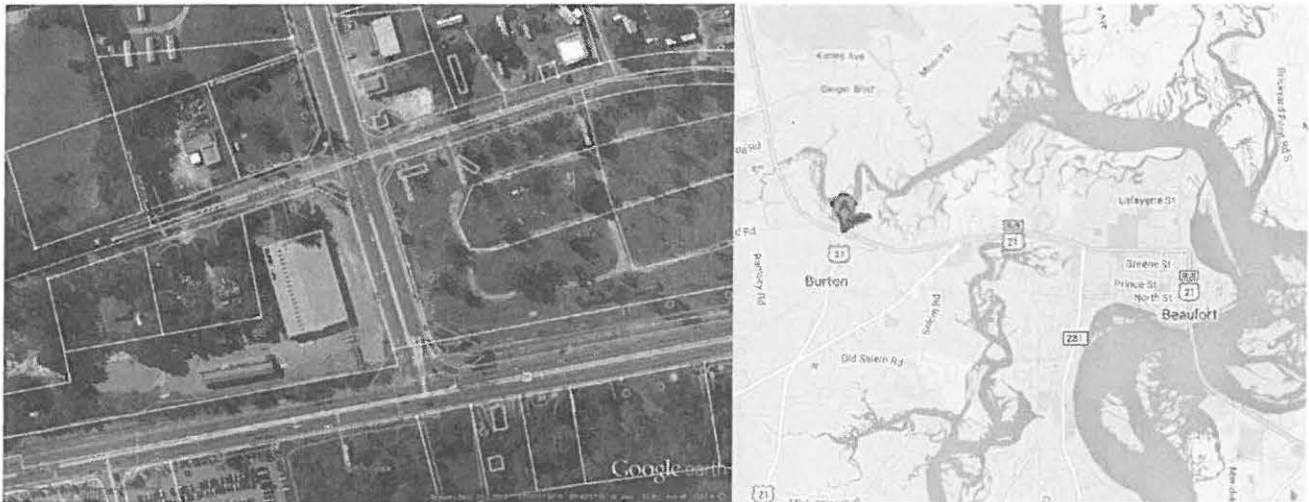
Project ID P028188: 2016 State Resurfacing ACT 98 Program (4.310 Total Miles)

- Scope: Resurfacing Various routes in Beaufort County
- Termini: S- 256 E: 0.04 miles SW of SC 128 to S-7-23
S- 286 E: US-21 to S-7-287
S- 323 N: S-7-322 to S-7-279
S- 624 E: US 278 to S-7-334
S- 649 N: US-21 to End State Maintenance
- Anticipated Project Cost: \$1,070,300
- Anticipated Construction Cost: \$1,070,300
- Schedule: Letting is scheduled for September 2015

Rural System Upgrade – Lowcountry:

Project ID 0041192: US21 @ US21 Business Intersection Improvement (0.409 Total Miles)

- Scope: Intersection of US-21 Business (Trask Parkway) @ US Route 21 (Parris Island Gateway) to include right-turn lane, Beaufort County.
- Termini: US-21 N: 0.1 mile South of County Shed Road to 0.1 mile West of Intersection
US-21 BUS N: Intersection to 0.03 mile N of the Intersection
- Anticipated Project Cost: \$1,072,400
- Anticipated Construction Cost: \$813,300
- Schedule: Let in April 2015; Bids rejected due to non-competitive bids. Anticipate that project will be RE-LET in October 2015. AWAITING EASEMENT & UTILITY AGREEMENT FROM BJSWA



Project ID 0041799: SC-802 & Holly Hall / Brickyard Intersection (0.787 Total Miles)

- Scope: Intersection Improvement (Round-a-bout Construction) along SC Route 802 (Sam's Point Road) at S-112 (Holly Hall Road)/ S-72 (Brickyard Point Road) on Lady's Island, Beaufort County.
- Termini: SC-802 E: S-791 Doe Road to Cottage Road (local)
S-72 W: S-750 Middle Road to SC-802
S-112 E: SC-802 to 0.2 miles E of Intersection
- Anticipated Project Cost: \$3,577,400
- Anticipated Construction Cost: \$3,108,400
- Schedule: Letting is scheduled for Winter 2015-2016



Project ID 0041808: US-278 Windmill Harbour Intersection Improvement (1.600 Total Miles)

- Scope: S-772 (Blue Heron Point Road) S-298 (Jenkins Road) (Frontage Road @ Windmill Harbour)
- Termini: US-278 N
- Anticipated Project Cost: \$1,205,300
- Anticipated Construction Cost: \$1,005,300
- Schedule: Let in February 2015; Contract Awarded to; **UNDER CONSTRUCTION**- est. complete in August



Total Project Cost shown reflects the estimated total value across all counties and funding sources.
* Indicates that project is funded from multiple programs.

Safety Funds:

Project ID P028659: US21 @ SC 170 Intersection Improvement (1.050 Total Miles)

- Scope: Intersection of US-21 @ SC Route 170 to include access management strategies that either eliminate or restrict some turning movements from driveways near the intersection, Beaufort County.
- Termini: US-21 (Parris Island Gateway): SC 170 to Ambrose Run
SC 170 E (Robert Smalls Parkway): 500 ft prior to S-761 to US 21
S-761 N: SC 170 to 800 ft N of SC 170
- Anticipated Project Cost: \$1,075,000
- Anticipated Construction Cost: \$925,000
- Schedule: Letting anticipated for Winter 2016-2017.



Locally Administered Projects - LPA (for information only – not included in summary)

Project ID 0036939: Boundary Street Re-development Project (1.501 Total Miles)

- Scope: Intersection improvement at US-21 @ SC Route 170 to include access management strategies that either eliminate or restrict some turning movements from driveways near the intersection, Beaufort County.
- Termini: US-21 Business (Boundary Street): SC 170 to Ribaut Road
SC 170 E (Robert Smalls Parkway): 0.161 miles prior to US 21 Bus intersection
- Anticipated Project Cost: \$23,806,816
- Schedule: Out for bids currently; Anticipate construction starting later this summer.

Project ID 0027274: May River Road Transportation Alternatives Project (0.600 Total Miles)

- Scope: *SIDEWALK CONSTRUCTION* and *DRAINAGE IMPROVEMENTS* along SC Route 46 (May River Rd) from S-31 (Pin Oak St) both sides to S-583 (Whispering Pines St), with continuation of sidewalk on northside of SC 46 to S-29 (Buck Island Rd), Beaufort County.
- Termini: SC 46 (May River Road): S-31 to S-583
- Anticipated Project Cost: \$891,330
- Schedule: LET by Town of Bluffton in Fall/Winter 2015

Project ID 0027276: Allison Road Connector Enhancement Project (0.260 Total Miles)

- Scope: *STREETSCAPE IMPROVEMENTS* along S-159 (Allison Road) to include Construction of (10-ft) Multi-Use Path and Drainage Improvements to connect Ribaut Road to the Spanish Moss Trail for a total of 1,405 LF within the City of Beaufort (LPA), Beaufort County.
- Anticipated Project Cost: \$747,260
- Schedule: LET by City of Beaufort in Fall/Winter 2015

Total Project Cost shown reflects the estimated total value across all counties and funding sources.

* Indicates that project is funded from multiple programs.

Colleton County:

- SCDOT anticipates construction to begin on approximately \$32,608,291 between fiscal year 2015 and 2019 in Colleton County.
- This includes \$1,986,991 in ACT 98 funded projects.

Colleton County Funding Summary		
Program	Total Mileage	Funding
Bridge - Replacement (On-System)	1.000	\$9,654,000
C Program – C Program	0.700	\$850,000
Enhancement - Rural	1.163	\$661,500
Interstate – Interstate Rehabilitation	14.000	\$18,162,000
Pavement Improvement & Preservation - Resurfacing (Act 98)	6.530	\$1,986,991
Rural System Upgrade - Lowcountry	0.033	\$1,293,800
TOTALS	23.426	\$32,608,291

Bridge - Replacement (On-System):

Project ID 0028448: US-21 Bridge Replacement over Sandy Run Creek (0.500 Total Miles)

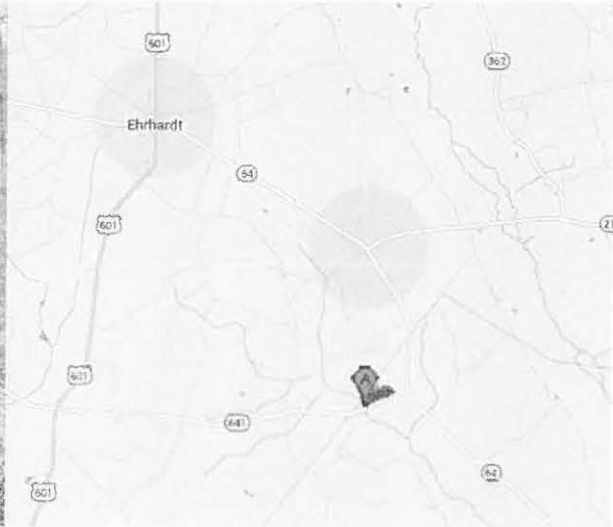
- Scope: Replace Bridge over Sandy Run Creek
- Anticipated Project Cost: \$5,330,000
- Anticipated Construction Cost: \$4,800,000
- Schedule: Letting is scheduled for 2019



Total Project Cost shown reflects the estimated total value across all counties and funding sources.
 * Indicates that project is funded from multiple programs.

Project ID 0028450: SC-641 Bridge Replacement over Willow Creek (0.500 Total Miles)

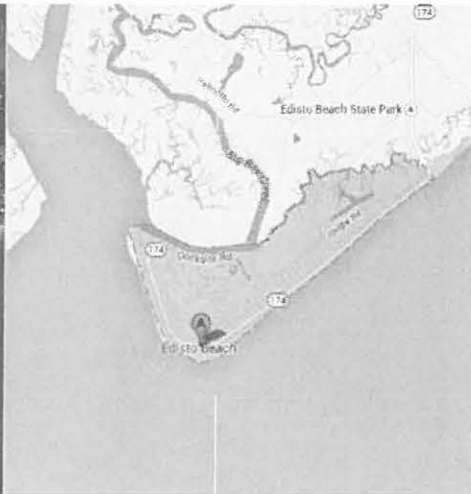
- Scope: Replace Bridge over Willow Creek
- Anticipated Project Cost: \$4,324,000
- Anticipated Construction Cost: \$3,885,000
- Schedule: Letting is scheduled for 2018



C Program:

Project ID 0027541: Edisto Roadway & Drainage Improvement Project (0.450 Total Miles)

- Scope: Project scope includes valley gutters along Myrtle Street (S-682) from Edings Street (local) to Lybrand Street (S-684), piping from Lybrand Street to Marianne Street (S-688) and paving from Myrtle Street and Ebbtide Street (local) to Palmetto Blvd (SC 174).
- Termini: S-682:Edings Street (local) - (S-684), (S-684) – (S-688), Ebbtide Street (local) to (SC-174)
- Anticipated Project Cost: \$250,000
- Anticipated Construction Cost: \$217,500
- Schedule: Letting is scheduled for Fall 2016



Total Project Cost shown reflects the estimated total value across all counties and funding sources.
* Indicates that project is funded from multiple programs.

Project ID 0028128: US 15 @ S-130/S-754 Intersection Improvements (0.250 Total Miles)

- Scope: Intersection Improvement to include turn lane along US-15 (N. Jefferies Highway) approaching the intersection of S-130 (Academy Road) and S-754 (Tuskagee Airman Drive) as well as turning improvements to the side roads.
- Termini: US 15 E: S-130, S-754
- Anticipated Project Cost: \$600,000
- Anticipated Construction Cost: \$580,000
- Schedule: Colleton County is developing this project locally – schedule TBD.



Enhancement – Rural:

Project ID 0042279: SC-174 Sidewalk Improvements (1.163 Total Miles)

- Scope: Sidewalk upgrades from Baynard Street to Atlantic Street on SC 174 (Palmetto Boulevard) in Edisto Beach
- Termini: SC-174 E: Baynard Street to Atlantic Street
- Anticipated Project Cost: \$661,500
- Anticipated Construction Cost: \$584,400
- Schedule: Let in June 2015 – construction starts after Labor Day and complete by Spring 2016



Total Project Cost shown reflects the estimated total value across all counties and funding sources.

* Indicates that project is funded from multiple programs.

Interstate - Interstate Rehabilitation:

Project ID P027550: 2015 Interstate Rehabilitation Program (14,000 Total Miles)

- Scope: Interstate Rehabilitation in Colleton County
- Termini: I-95 N: Mile Marker 48 to Mile Marker 62
- Anticipated Project Cost: \$18,162,000
- Anticipated Construction Cost: \$17,262,000
- Schedule: Letting is scheduled for Winter 2018



Pavement Improvement & Preservation - Resurfacing (Act 98):

Project ID P028273: 2016 State Resurfacing ACT 98 Program (6,530 Total Miles)

- Scope: 2016 NFA Resurfacing in Colleton County
- Termini:

S-14 E: 0.60 Miles N of SC 303 to 0.05 miles E of S-677	
S-14 CON E: SC 303 to S-14	S-484 E: US 15 to S-544
S-486 E: US 15 to S-486	S-501 N: S-503 to S-502
S-502 E: S-501 to S-216	S-512 E: S-216 to S-323
S-544 E: S-484 to S-484	S-572 E: S-148 to S-572
S-649 N: S-130 to US 15	S-655 N: SC 303 to S-654
S-797 N: S-572 to S-21	S-900 E: S-653 to S-655
S-152 E: S-121 to S-168	S-255 N: S-184 to S-591
S-257 N: S-252 to S-254	S-295 N: SC 64 to S-295
S-307 N: SC 63 to S-309	S-308 E: SC 63 to S-309
S-309 N: US 17A to S-307	S-391 N: S-323 to S-730
- Anticipated Project Cost: \$1,986,991
- Anticipated Construction Cost: \$1,806,355
- Schedule: Letting is scheduled for September 2015

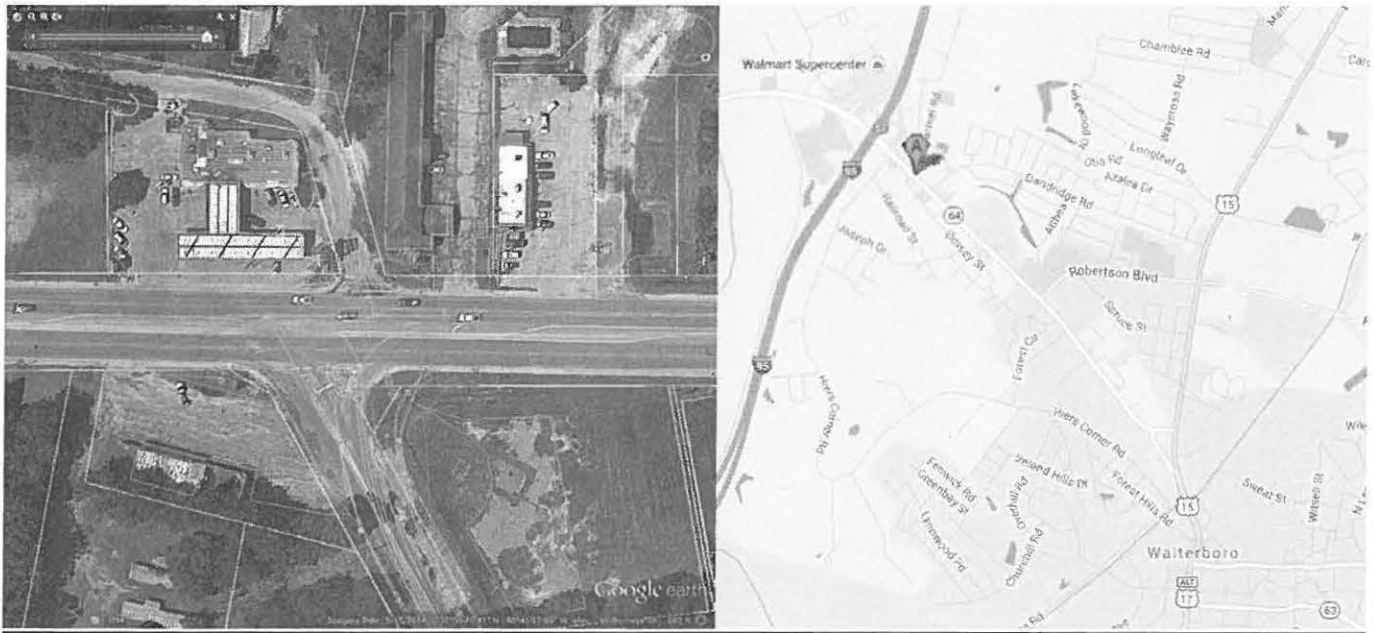
Total Project Cost shown reflects the estimated total value across all counties and funding sources.

* Indicates that project is funded from multiple programs.

Rural System Upgrade – Lowcountry:

Project ID 0041626: SC-64 @ S-24 Mount Carmel Intersection Improvement (0.033 Total Miles)

- Scope: Intersection improvement along SC Route 64 (Bells Highway) @ S-24 (Mount Carmel Road), including a S-24 dedicated right-turn lane for safety and movement improvements within the City of Walterboro, Colleton County.
- Termini: SC-64 E: S-68 (Hiers Corner Road) to S-216 (Dandridge Road)
S-24 E: SC-64 (Bells Highway) to 0.17 miles N of SC-64 intersection
S-208 E: SC-64 (Bells Highway) to 0.033 miles S of SC-64 intersection
- Anticipated Project Cost: \$1,293,800
- Anticipated Construction Cost: \$953,500
- Schedule: Let in May 2015; no competitive bids – RE-LET in September 2015



Total Project Cost shown reflects the estimated total value across all counties and funding sources.

* Indicates that project is funded from multiple programs.

Hampton County:

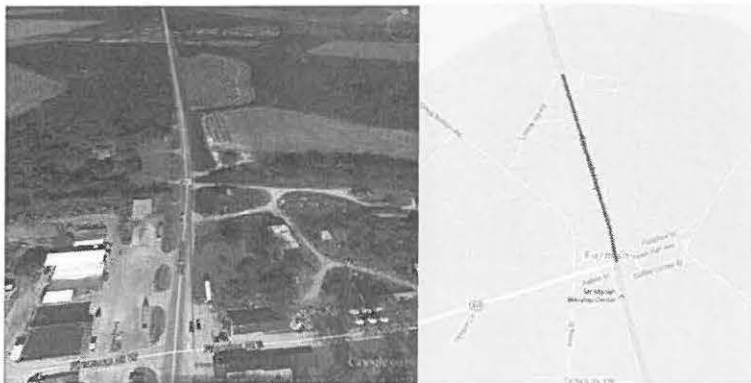
- SCDOT anticipates construction to begin on approximately \$14,591,138 between fiscal year 2015 and 2016 in Hampton County.
- This includes \$1,847,800 in ACT 98 funded projects.

Hampton County Transportation Funding Summary		
Program	Total Mileage	Funding
C Program - C Program	0.700	\$142,000
Pavement & Reconstruction	4.550	\$1,905,300
Pavement Improvement & Preservation - Preservation	10.570	\$551,438
Pavement Improvement & Preservation - Resurfacing (Act 98)	10.240	\$1,847,800
Rural System Upgrade - Lowcountry	3.089	\$9,581,900
Transportation Alternatives - Areas >5K & <200K	0.070	\$562,700
TOTALS	29.219	\$14,591,138

C Program:

Project ID P027540: Sidewalk installation (0.700 Total Miles)

- Scope: Install sidewalk along US-601 from S-128 to near S-821 in the Town of Furman
- Termini: US 601 N: 75' North of S-128 to 340' N of S-821
- Anticipated Project Cost: \$142,000
- Anticipated Construction Cost: \$141,400
- Schedule: Let in April 2015; Construction to start in Summer 2015 w/ est. completion in September



Pavement & Reconstruction – Pavement & Reconstruction:

Project ID P028665: 2016 Federal Aid Program (4.550 Total Miles)

- Scope: Federal Aid Resurfacing in Hampton County
- Termini: SC 68 E: S-696 to Beginning of Taper to 4 lane divided Highway
- Anticipated Project Cost: \$1,905,300
- Anticipated Construction Cost: \$1,905,300
- Schedule: Letting is scheduled for November 2015

Total Project Cost shown reflects the estimated total value across all counties and funding sources.

* Indicates that project is funded from multiple programs.

Pavement Improvement & Preservation – Preservation:

Project ID P028507: 2016 NFA Preservation Program (10.570 Total Miles)

- Scope: FY 2015-16 NFA Secondary Pavement Preservation Program in Hampton County
- Termini: S-19 N: SC-3 to L-199
S-194 E: S-194 to S-62
S-523 N: SC-68 to End State Maint.
S-545 N: S-35 to End Pavement
S-696 E: SC-68 to End State Maint.
S-707 N: S-55 to End State Maint.
S-742 E: S-464 to Dead End
S-751 N: S-526 to Dead End
S-815 N: S-474 to Dead End
S-70 E: S-68 to S-87
S-483 N: S-17 to Dead End
S-526 E: S-140 to L-327
S-694 E: SC-68 to End State Maintenance
S-703 N: S-19 to Dead End
S-719 N: S-707 to Dead End
S-750 E: S-526 to S-767
S-807 N: S-48 to Dead End
- Anticipated Project Cost: \$551,438
- Anticipated Construction Cost: \$482,508
- Schedule: Letting is scheduled for June 2015

Pavement Improvement & Preservation - Resurfacing (Act 98)

Project ID P027882: 2015 \$40 Million Add. Act 98 Program (5.400 Total Miles)

- Scope: Secondary Resurfacing in Hampton County
- Termini: S-81 N: S-45 to S-73
S-348 E: S-46 to US 278
S-382 E: US-278 to End State Maint.
S-561 N: SC-363 to Dead End
S-676 E: S-577 to L-735
S-338 E: SC-3 to S-30
S-381 N: SC-63 to End State Maintenance
S-402 E: US-321 to S-108
S-662 E: S-296 to Dead End
- Anticipated Project Cost: \$679,100
- Anticipated Construction Cost: \$679,100
- Schedule: Letting is scheduled for June 2015

Project ID P028324: 2016 State Resurfacing ACT 98 Program (4.840 Total Miles)

- Scope: 2016 Non-Federal Aid Secondary Pavement Improvement Program in Hampton County
- Termini: S-31 N: S-181 to SC 363
S-243 N: S-100 to Allendale County Line
S-347 N: S-78 to S-271
S-669 N: S-336 to S-577
S-89 N: S-381 to S-14
S-295 N: US 601 to S-118
S-421 N: S-417 to Dead End
- Anticipated Project Cost: \$1,168,700
- Anticipated Construction Cost: \$1,168,700
- Schedule: Letting is scheduled for July 2015

Rural System Upgrade – Lowcountry:

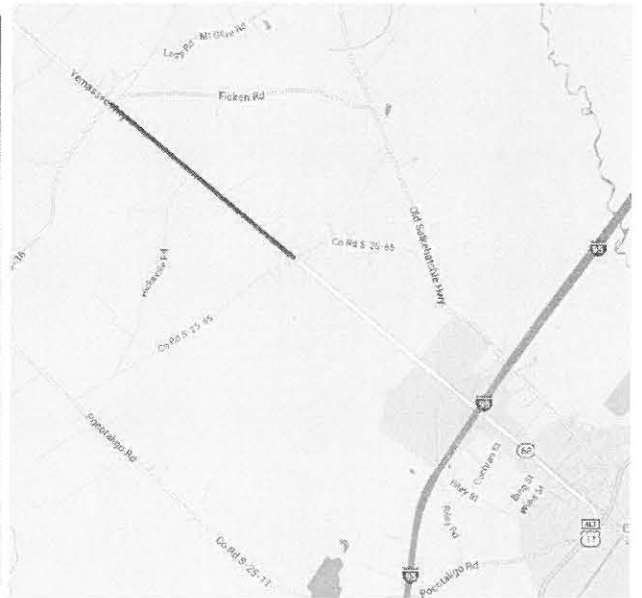
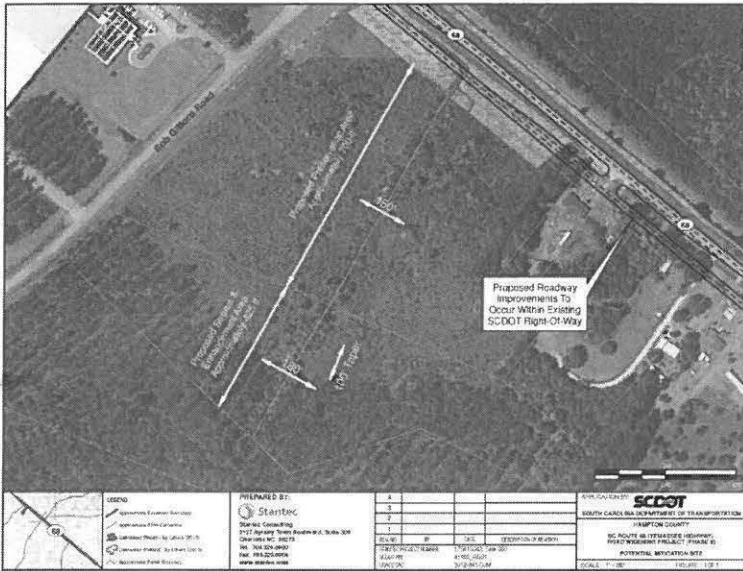
Project ID 0041402: SC-68 WIDENING (3.089 Total Miles)

- Scope: Widening of SC-68 from 0.53 miles Northwest of S-65 (Davidson Tower Road/Ridgecut Road) to 0.95 miles Northwest of S-36 (Yemassee Highway) for approximately 2.5 miles.
- Termini: SC-68 E: 0.95 miles NW of S-36 (Possum Corner Road) to 0.5 miles NW of S-65 (Davidson Tower Road)
- Anticipated Project Cost: \$9,581,900
- Anticipated Construction Cost: \$9,000,000

Total Project Cost shown reflects the estimated total value across all counties and funding sources.

* Indicates that project is funded from multiple programs.

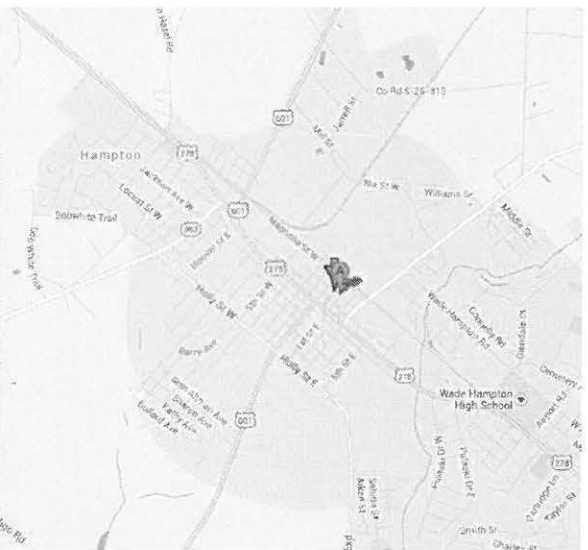
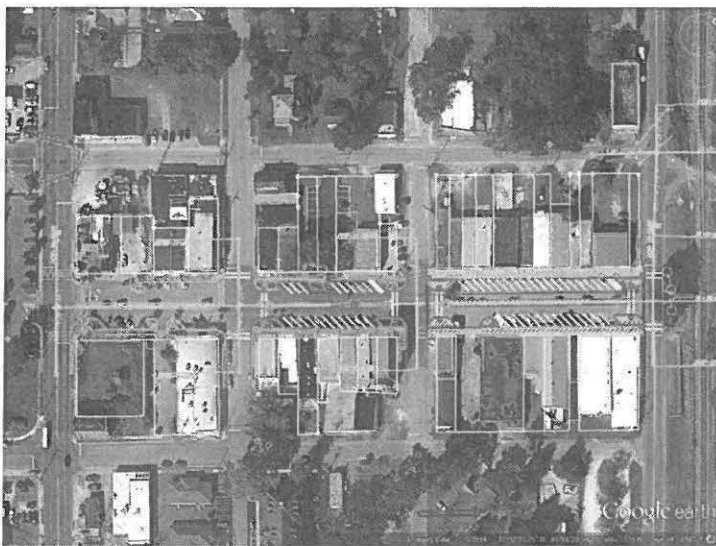
- Schedule: Letting is scheduled for Spring 2016 – AWAITING CORP PERMIT APPROVAL



Transportation Alternatives - Areas >5K & <200K:

Project ID P027604: S-11 Lee Ave Streetscape Improvement, Phase III (0.070 Total Miles)

- Scope: Streetscape Improvements of Lee Avenue (S-11) between Maple Street (S-106) and Magnolia Street (S-83), to include sidewalk, pedestrian crosswalks, curb & gutter, landscaping & irrigation, pedestrian lighting and hardscape within the Town of Hampton.
- Termini: S-11 N: S-106 (Maple Street) to S-83 (Magnolia Street)
- Anticipated Project Cost: \$562,700
- Anticipated Construction Cost: \$498,700
- Schedule: Letting is scheduled for Winter 2015-2016



Total Project Cost shown reflects the estimated total value across all counties and funding sources.
 * Indicates that project is funded from multiple programs.

Jasper County:

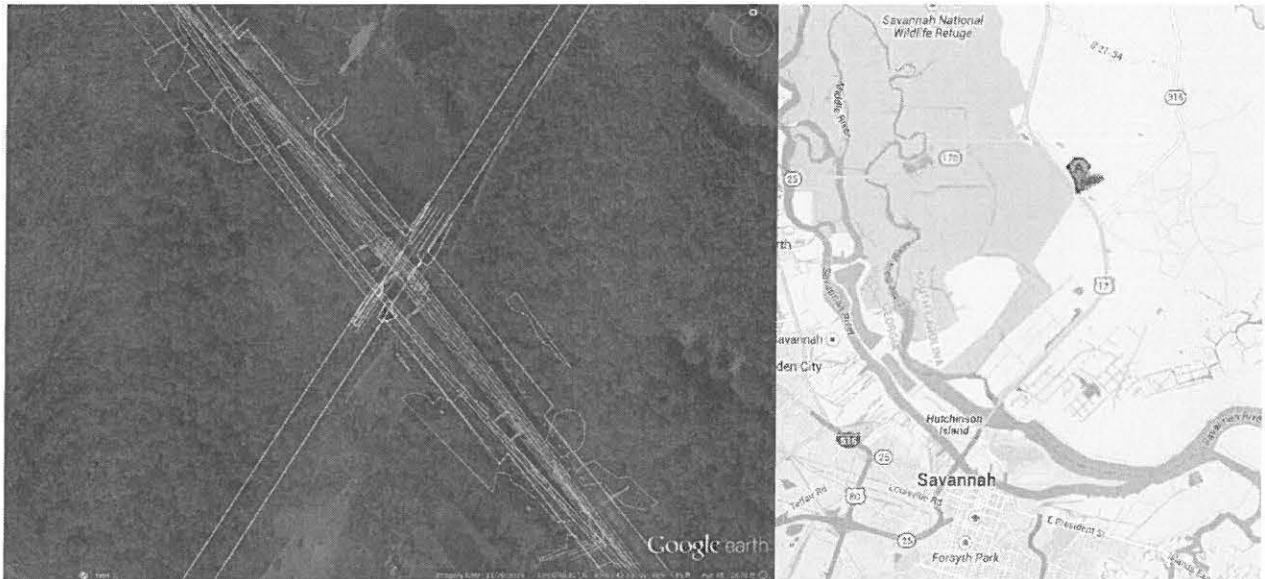
- SCDOT anticipates construction to begin on approximately \$91,496,198 between fiscal year 2015 and 2018.
- This includes \$804,200 in ACT 98 funded projects.

Jasper County Transportation Funding Summary		
Program	Total Mileage	Funding
Bridge - Replacement (On-System)	1.24	\$11,936,803
C Program - C Program	0.720	\$535,195
Interstate – Interstate Rehabilitation	10.000	\$23,162,000
Pavement Improvement & Preservation - Resurfacing (Act 98)	2.780	\$804,200
Rural System Upgrade - Lowcountry	4.100	\$54,000,000
State Funds - State Funded Bridges (Act 98)	0.500	\$1,058,000
TOTALS	19.34	\$91,496,198

Bridge - Replacement (On-System):

Project ID 0039603: US-17 Bridge Replacement, Roadway Work (0.800 Total Miles)

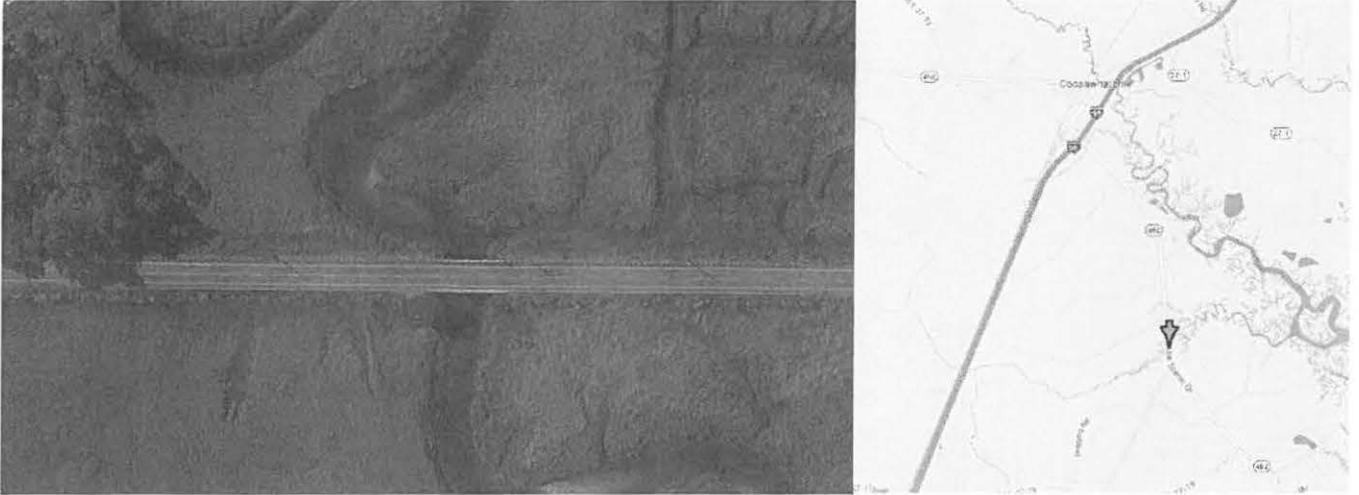
- Scope: Removal of bridge and construction of at-grade crossing at on US-17 at MP 4.82 (S.C.L RAILROAD)
- Termini: US-17 N: 0.3 miles North of SC-315 intersection to 1.3 miles South of SC-170 intersection
- Anticipated Project Cost: \$3,610,000
- Anticipated Construction Cost: \$2,978,600
- Schedule: Letting is scheduled for Summer 2016



Total Project Cost shown reflects the estimated total value across all counties and funding sources.
 * Indicates that project is funded from multiple programs.

Project ID 0040476A: SC 462 over Bees Creek Bridge Replacement (0.220 Total Miles)

- Scope: Replace a structurally deficient bridge on SC 462 at MP 21.2 over Bees Creek.
- Termini: SC 462 (Coosaw Scenic Drive) approximately 3.5 miles South of Coosawatchie, Jasper County.
- Anticipated Project Cost: \$4,432,550
- Anticipated Construction Cost: \$3,930,827
- Schedule: Let in November 2014; **CONSTRUCTION** to begin in July 7, 2015



Project ID 0040476B: SC 462 over Euhaw Creek Bridge Replacement (0.220 Total Miles)

- Scope: Replace a structurally deficient bridge on SC 462 at MP 28.5 over Euhaw Creek.
- Termini: SC 462 (Lowcountry Drive) approximately 5 miles East of the Town of Ridgeland, Jasper County.
- Anticipated Project Cost: \$3,894,253
- Anticipated Construction Cost: \$3,362,753
- Schedule: Let in November 2014; **CONSTRUCTION** to begin in December 2015 (located on a Hurricane Evacuation Route – construction to begin after hurricane season ends this year).



Total Project Cost shown reflects the estimated total value across all counties and funding sources.

* Indicates that project is funded from multiple programs.

C Program:

Project ID P028572: Jasper CTC - Resurfacing US-321 (0.500 Total Miles)

- Scope: Resurface Deerfield Road (US-321)
- Termini: US-321 N: 0.26 miles N of S-203 to 0.50 miles S of S-170
- Anticipated Project Cost: \$392,600
- Anticipated Construction Cost: \$392,600
- Schedule: Letting is scheduled for August 2015

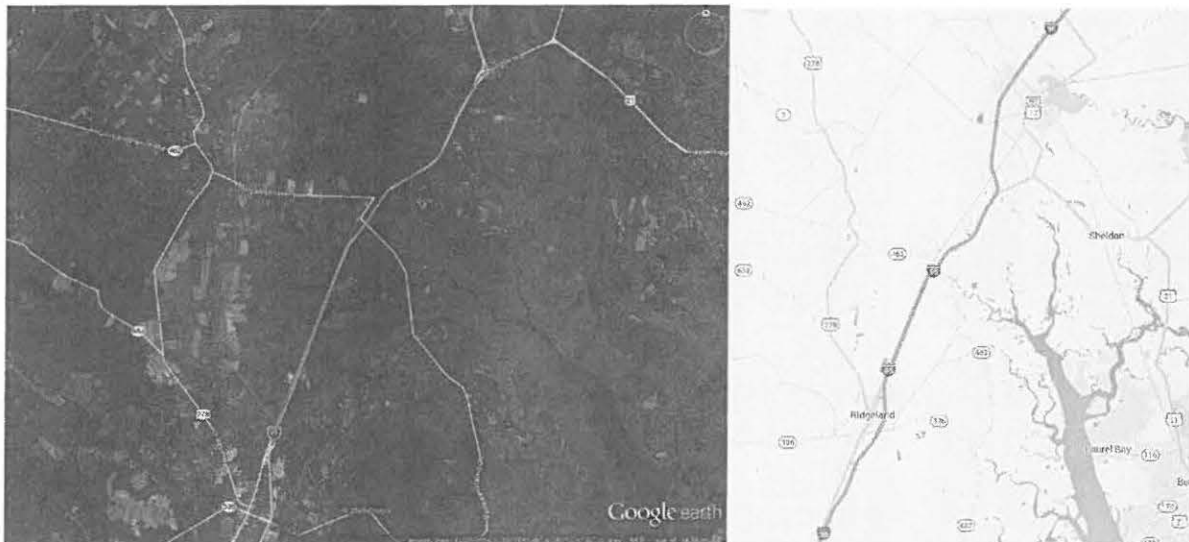
Project ID P028055: Jasper CTC - Resurfacing S-311 (0.220 Total Miles)

- Scope: Resurface Pike Lane (S-311)
- Termini: S-311: S-29 (Smiths Crossing) – SC-336 (Tillman Road)
- Anticipated Project Cost: \$142,592
- Anticipated Construction Cost: \$142,592
- Schedule: Letting is scheduled for August 2015

Interstate – Interstate Rehabilitation:

Project ID P027551: I-95 Rehabilitation - Jasper County Section (10.000 Total Miles)

- Scope: Rehabilitation of concrete/asphalt pavement along NB/SB lanes of Interstate 95 from MP 23 to MP 33 within Jasper County.
- Termini: I-95 N: slightly north of Exit 22 to Exit 33
- Anticipated Project Cost: \$23,162,000
- Anticipated Construction Cost: \$22,062,000
- Schedule: Letting is scheduled for Winter 2016-2017



Total Project Cost shown reflects the estimated total value across all counties and funding sources.

* Indicates that project is funded from multiple programs.

State Funds - State Funded Bridges (Act 98):

Project ID P027861: Act 98 - District 6 Package A (0.500 Total Miles)

- Scope: S-27-119 over Cypress Creek in Jasper County
- Termini: Mile Point 3.360
- Anticipated Project Cost: \$1,058,000
- Anticipated Construction Cost: \$1,056,000
- Schedule: Let in December 2014; **UNDER CONSTRUCTION** – est. completion in November



Locally Administered Projects - LPA (for information only – not included in summary)

Project ID 0028310: Interstate 95 – New Interchange (Exit 3) Project (1.501 Total Miles)

- Scope: Preliminary Engineering for a new interchange on I-95 at mile-marker 3, the 4 lane widening of Purrysburg Road from I-95 to US 17, an East-West connector roadway from Purrysburg Road to US 321 and intersection improvements at US 321 and US 17 on the Northern end and at US 179 and US 17 on the Southern end, Jasper County & City of Hardeeville with assistance from Beaufort County.
- Status: Consultant is working with USACE to develop Environmental Impact Statement (EIS) & Interchange Justification Report (IJR) for review and approval by SCDOT & FHWA.
- Anticipated Project Cost: \$119,000,000 (\$48,000,000 for interchange)
- Schedule: SIB & Developer funded project – Schedule TBD based on funding availability and NEPA approvals.

Total Project Cost shown reflects the estimated total value across all counties and funding sources.

* Indicates that project is funded from multiple programs.

RESOLUTION 2015 / 02

**A RESOLUTION OF THE BOARD OF DIRECTORS OF THE
LOWCOUNTRY COUNCIL OF GOVERNMENTS IN SUPPORT OF
MARINE CORPS AIR STATION BEAUFORT AND MARINE CORPS
RECRUIT DEPOT PARRIS ISLAND AND IMPLEMENTATION OF THE
RECOMMENDATIONS OF THE
2015 JOINT LAND USE STUDIES**

WHEREAS, Marine Corps Air Station Beaufort (“MCAS Beaufort”) and Marine Corps Recruit Depot Parris Island (“MCRD Parris Island”) (together, the “Marine Corps Installations”) are major contributors to the well-being and economic prosperity of the citizens in the Lowcountry; and

WHEREAS, the mission of the Marine Corps Installations requires certain actions which, by their nature, generate impacts that can be observed outside the perimeter of MCAS Beaufort and MCRD Parris Island; and

WHEREAS, certain patterns of development, construction, and subsequent uses, if located near the Marine Corps Installations operational zones, have the potential to increase the number of persons who may find such impacts undesirable and, therefore, lead to complaints and incompatible land uses; and

WHEREAS, such patterns of development, construction, and uses are often referred to as encroachment; and

WHEREAS, encroachment has the potential to significantly impact the effective performance of the missions at the Marine Corps Installations as well as the quality of life of our citizens, community, and industry; and

WHEREAS, it is in the best interest of the citizens of the Lowcountry and the citizens of the United States of America that the Marine Corps Installations perform their missions in an efficient and effective manner; and

WHEREAS, all property owners have an interest in using their property in a manner consistent with the law and with the Constitutions of the United States and the State of South Carolina; and

WHEREAS, the Marine Corps Installations, the United States Department of Defense, and the Lowcountry Council of Governments have cooperated to protect their missions and nearby civilian lands from encroachment by several means including, but not limited to, acquiring property and development rights, enacting ordinances, adopting and supporting land use regulations within operating zones for the benefit of the Marine Corps and the property owners and

Proposed Resolution of Support for
Joint Land Use Study 2015

prospective owners within those zones, and enforcing recreational water safety protocols; and

WHEREAS, the Lowcountry Council of Governments, working with the Marine Corps Installations, the United States Department of Defense, Beaufort County, the City of Beaufort and the Town of Port Royal,, has conducted a Joint Land Use Study (“JLUS”) that considers the patterns of development, construction and uses that are suitable to protect the mission of the Marine Corps Installations and to guide property owners in the use of their property so as to balance the safety and welfare of the citizens of the Lowcountry with the interests of individual property owners; and

WHEREAS, the Northern Beaufort County Regional Plan Implementation Committee, sitting as the JLUS Policy Committee, has completed its work and review of the JLUS reports and has transmitted a final JLUS report for each Marine Corps Installation; and

WHEREAS, the Lowcountry Council of Governments, as project manager, is engaged in considering and potentially supporting the recommendations contained in the JLUS reports for MCAS Beaufort and MCRD Parris Island;

WHEREAS, the Board of Directors of the Lowcountry Council of Governments seeks to communicate its support for the continued effective and efficient operation of the Marine Corps Installations and its support for the objectives of the JLUS study; and

NOW, THEREFORE, BE IT RESOLVED, that the Lowcountry Council of Governments does hereby restate its support for MCAS Beaufort and MCRD Parris Island and their missions, and further, the Lowcountry Council of Governments does hereby state its support for the objectives of the 2015 JLUS studies conducted for each base, including the protection of the Marine Corps Installations from encroachment and the protection of civilian quality of life.

Dated this ____ day of _____, 2015.

**BOARD OF DIRECTORS OF THE
LOWCOUNTRY COUNCIL OF GOVERNMENTS**

By: _____



Lowcountry Council of Governments
 Fiscal Year 2015/2016 Budget
 Executive Committee Work Session

Here with is presented the proposed budget for FY2015/2016 for Lowcountry Council of Governments. The combined budget of all departments is balanced at \$6,420,918. This is a decrease of \$513,697 from the prior year. Each department also has a balanced budget as follows:

1. Administration \$154,888
2. Aging \$2,765,888
3. Community and Economic Development \$396,417
4. HOME \$1,066,986
5. Planning \$473,796
6. Workforce Development \$1,562,944
7. Loaned Employee \$0

Administration.

Revenue in Administration totals \$154,888 and comes from two primary sources. LCOG membership fees paid by the four counties total \$148,195. Each county pays \$0.60 cent per capita. This rate has not changed in more than 20 years. ***A fee increase is not proposed for next year but may be worth considering in the future.*** Revenue from the state appropriation will see a slight increase of \$11,505 for a total \$54,169. This funding source has decreased (\$30K) significantly in recent years from a high of \$83,071 in 2007 to the proposed budget amount of \$54,169. It's good to see an increase in this revenue. Miscellaneous or other sources total \$7,500 and transfers from fixed assets total \$74,417.

Expenditures in Administration include grant matching funds of \$129,393. It is important to note that the majority of what is received as fees from the member counties is returned by way of grant matching funds. The annual mortgage payment on the building annex is budgeted at \$84,228. Equipment totaling \$30,000 for a vehicle and/or telephone system is also budgeted. Vehicles are replaced when they have more than 100,000 miles. The Executive Director's vehicle current mileage is 101,761 and should be replaced next year. A new telephone system is estimated at \$20,000. The current Fortran system is old and out dated. A new system should improve efficiencies in our operation. We may be able to lease purchase the telephone system and purchase the vehicle or make a choice between the two.

Contingency is budgeted at \$35,160.

Aging

Aging revenues and expenses are balanced at \$2,765,888 a decrease of \$101,166 from last year. The decrease is from the Family Caregiver Respite fund. The state had additional respite money last year that we took advantage of. More funds may be forth coming again and if so we will add back to our budget. Sources of funding include: \$2,534,575 from the SC Lt. Governor's Office on Aging, \$165,740 from outside local match paid by the Aging Providers and \$65,572 in matching funds from the COG.



The expenditures comprise the various programs that fall under the Aging umbrella: Ombudsman, Family Caregiver, Insurance Counseling, Information Referral & Assistance, Legal, Minor Home Repair, Respite and Alzheimer's Assistance. Also included in Aging are contracted services for meals, transportation and homecare services. Sherry actually maintains separate budgets for each of these programs.

Community & Economic Development

C&ED is balanced at \$396,417. Revenue sources include \$366,346 in grant funding from CDBG \$50K, EDA \$58K, and Local Grants Administration \$258K. LCOG is providing \$30,071 in grant matching funds. The offsetting expenditures are for salaries, and operations and maintenance cost for the department.

It is important to note that C&ED is 92% grant funded. Director Michelle Knight and her staff have grant awards and/or plans to submit grant applications for the local governments in the region that will sustain this department into FY16/17. A job well done by the C&ED staff.

HOME

The HOME budget is balanced at \$1,066,986. Revenue from HUD totals \$973,986 and the local government appropriation is \$93,000. Expenditures include 50% of the Housing Manager's salary. The remaining budget is for home improvements and repairs in the region. The remaining 50% of the salary is covered by C&ED as the Housing Manager also works on various grant projects as well.

Planning

The Planning budget is balanced at \$473,796. This is down \$32,465 from the previous year as some grant projects like JLUS were completed this year. Revenue sources include grant funds totaling \$372,826 from various sources to include SCDOT, SCDHEC, SCEMD, Dept. of Defense Office of Economic Adjustment, and EDA. LCOG is providing grant matching funds of \$33,750 and Local Government Contracts total \$67,220.

Expenditures match revenues at \$473,796. Many of the grants Planning Director Ginnie Kozak has budgeted are repeat grants. Ginnie has established great relationships with SCDOT to provide Transportation Planning for the region. Dept. of Defense is providing funding this year for implementation of the JLUS Plan that was completed last year. Many of these projects are regional; the Planning department is still available to provide contract services to our local governments. We need your help sharing this message.

The Planning Department is 93% funded by grants and contract work.



Workforce Development

The workforce development revenues and expenditures are balanced at \$1,562,944. This is a decrease of approximately \$269,187 when compared to last year's budget of \$1,832,131. Funding for this program was cut at the Federal level and again at the state level by SC Department of Employment and Workforce. There are a few things to mention with this program.

First there is no way to absorb such a cut in funding without making cuts to the program. We've tried to balance the cuts between the two largest budget items, training and staff. There is a direct correlation between the two. Don't need one without the other.

In the current year there are 15 workforce staff budgeted. Budgeted next year is 11 staff, a decrease of 4. Two slots have already been eliminated through attrition. There are 2 however that must be cut. We will continue to provide all of the workforce services in all 4 counties. SC DEW is requiring us to add the position of Center Manager in the Beaufort Office so this will be done. Some positions will serve the region like the Certification Coordinator and Program Educator (formerly Youth only). Staff in other positions will be cross trained and perhaps serve in two counties on a rotating schedule.

We must keep in mind that while we have a workforce department, there are different funding amounts for each program that must be maintained separately. We are allowed to transfer funds between some programs like Adult and Dislocated Worker, and others we are not, like Youth. The three main programs (there are others) are Adult, DW, Youth. Each with separate dollars and program goals.

The director, Hank Amundson, will continue to manage the Workforce and Aging departments for six more months. In January we hope to hire a new Aging director and transition Hank completely back to workforce. This will allow some savings in workforce. Hank has done a very good job. However, workforce and aging are the two largest programs we have and they have the most regulation and moving parts. Each need the full attention of a director.

Lastly, we have made application for some workforce grant funds. If we are successful in being awarded these grants, we will add funds back to training and staffing. Training is the number one goal.

Workforce employs about half of the COG staff. The new WIOA Legislation is requiring COGs to procure workforce services. So at some point next year, we will go through the bid solicitation process seeking a contract for these services. If there is a successful bidder a good portion of the program will be placed under contract. The COG will still be the administering agency responsible for the WIOA board and the program's success. However, the workforce centers, staff, and specific programs (Youth, DW, and Adult) may be under contract. This is important to note because it will have a significant impact on our indirect cost allocation.

Loaned Employee

There is no budget next year for the Loaned Employee department as we will no longer provide this service. This accounts for a decrease of \$143,044 to the overall budget.



Fringe Benefits

- A Cost of Living Increase of 2% is proposed.
- PEBA announced that the employer portion of health insurance premiums will increase by 4.5% and the employer portion of retirement contributions will increase by .05%
- The employee's retirement contribution also increased by .016%

An **employee performance evaluation** form has been selected and will be used by all departments starting this year. This is a good tool for both directors and staff to measure performance. The form may also be used for merit pay in the future if such a system is implemented.

Personnel

A vacant position in the Planning Dept. will be filled soon.

Also the salary is being adjusted for a current Planner to budget correctly for the position and grade.

I mentioned the personnel changes in Workforce above. Staffing will decrease from 15 in the current year to 11 next year due to funding cuts to the program.

Staffing in all of the other departments will remain the same.

This completes the summary. The operating budget revenue and expenditure reports are attached. Thank you for your attention. We are looking forward to a very successful year. The LCOG Board goals summary will be our guide for the upcoming year and has been considered in preparation of the budget document. Sherry and I are happy to answer any questions you may have.

Sherry Smith, Finance Director

Sabrena Graham, Executive Director

Lowcountry Council of Governments
 Operating Budget
 Fiscal Year July 1, 2015 to June 30, 2016

Revenue Sources	Comm. & Economic Dev.							Total	FY 14/15 Budget	Comparison Increase/(Decrease)
	Administration	Aging	C & ED	HOME	Planning	Workforce	Loaned Empl.			
1 State Appropriation	54,169							54,169	42,664	11,505
2 Local Government Appropriation	148,195			93,000				241,195	241,195	0
3 Other Sources	7,500					500		8,000	2,600	5,400
4 Transfer from Fixed Assets	74,417							74,417	75,781	(1,364)
5 Local- Grants Administration			257,846					257,846	217,606	40,240
6 Local- Contracts					67,220			67,220	85,000	(17,780)
7 Loaned Employees								0	143,044	(143,044)
8 SC Dept of Employment & Workforce						1,562,444		1,562,444	1,832,131	(269,687)
9 SC Lt. Governors Office-Aging		2,534,575						2,534,575	2,627,261	(92,686)
10 HUD- Affordable Housing				973,986				973,986	963,571	10,415
11 SC DOT					257,607			257,607	233,104	24,503
12 SC DHEC					13,650			13,650	10,000	3,650
13 SC EMD					31,569			31,569	25,000	6,569
14 Dept of Defense					60,000			60,000	131,500	(71,500)
15 CDBG			50,000					50,000	50,000	0
16 EDA			58,500		10,000			68,500	68,652	(152)
17 Outside Match (Aging Providers)		165,740							185,506	(19,766)
18 Required Match	(119,393)	65,572	25,071		28,750			0	0	0
19 Over Match	(10,000)	0	5,000	0	5,000	0		0	0	0
Total Revenues	154,888	2,765,888	396,417	1,066,986	473,796	1,562,944	0	6,420,918	\$6,934,615	(513,697)
FY 14/15 Budget	158,874	2,867,054	370,680	1,056,571	506,261	1,832,131	143,044	6,934,615		
Comparison Increase/(Decrease)	(3,986)	(101,166)	25,737	10,415	(32,465)	(269,187)	(143,044)	(513,697)		

Lowcountry Council of Governments
Operating Budget
Fiscal Year July 1, 2015 to June 30, 2016

Expenditures	Comm. & Economic Dev.							Total	FY 14/15 Budget	Comparison Increase/(Decrease)
	Administration	Aging	C & ED	HOME	Planning	Workforce	Loaned Empl.			
1 Salaries	449,006	287,905	152,847	24,554	143,305	420,335	1,477,951	1,618,542	(140,591)	
2 Retirement	240,267						240,267	254,366	(14,099)	
3 FICA	113,063						113,063	119,286	(6,223)	
4 SUTA	27,080						27,080	25,300	1,780	
5 Workers' Compensation Insurance	9,240						9,240	7,500	1,740	
6 Health and Dental Insurance	275,880						275,880	276,463	(583)	
7 Automobile Costs	13,690	9,990	1,850	740	370	10,360	37,000	34,871	2,129	
8 Building Costs	182,265	2,000				75,700	259,965	253,998	5,967	
9 Advertising	2,000	2,500	8,000	1,500	1,500	100	15,600	11,350	4,250	
10 Contracts	35,000	2,022,542	0	1,000,000	120,000	385,826	3,563,368	3,957,087	(393,719)	
11 Depreciation	4,380						4,380	4,380	0	
12 Dues, Subscriptions and Publications	10,000	2,000	1,500		1,200	1,500	16,200	14,699	1,501	
13 Equipment Leasing and Maintenance	22,000	500	500	250	1,000	26,000	50,250	48,525	1,725	
14 Insurance and Bonding	11,500	0				0	11,500	11,500	0	
15 Legal Fees	2,000	0	1,000	250			3,250	11,575	(8,325)	
16 Meetings	9,500	500	500	100	750	750	12,100	5,570	6,530	
17 Miscellaneous	14,000	500	250	100	100	900	15,850	13,360	2,490	
18 Postage and Shipping	10,000	1,500	250	100	100	700	12,650	12,200	450	
19 Printing	12,000	6,000	1,000		500	14,000	33,500	28,900	4,600	
20 Supplies	12,000	10,000	3,500	100	500	12,100	38,200	41,140	(2,940)	
21 Building and Equipment Purchases	53,500	4,200	2,000		1,500	4,500	65,700	34,965	30,735	
22 Travel, Training, and Related Expenses	40,000	16,000	11,000	5,200	4,000	26,563	102,763	77,842	24,921	
23 Fringe Benefits	(681,092)	190,576	101,174	16,253	94,857	278,232	0	0	0	
24 Indirect Costs	(747,552)	209,175	111,046	17,839	104,114	305,378	0	0	0	
25 Bad Debt								3,300		
26 Contingency	35,160						35,160	67,896	(32,736)	
Total Expenditures	154,888	2,765,888	396,417	1,066,986	473,796	1,562,944	0	6,420,918	\$6,934,615	(513,697)

FY 14/15 Budget 158,874 2,867,054 370,680 1,056,571 506,261 1,832,131 143,044 6,934,615

Lowcountry Council of Governments
Balance Sheet
For the Period Ending May 2015

Assets		
Cash - Unrestricted	56,541	
Cash - Restricted TDR	254,658	
Accounts Receivable	1,274,596	
Prepaid Expenses	8,533	
Property, Building & Equipment	1,682,318	
Amount to be Provided for Debt	646,487	
Total Assets		3,923,133
 Liabilities & Equity		
<i>Liabilities</i>		
Accounts Payable	\$238,480	
Accrued Liabilities	420,784	
Long-Term Debt	646,487	
<i>Total Liabilities</i>		\$1,305,751
 <i>Fund Equity</i>		
Investment in Fixed Assets	\$1,682,318	
Unassigned Fund Balance	\$863,188	
Restricted Fund Balance	\$0	
Nonspendable Fund Balance	\$7,934	
Revenues over Expenditures	63,942	
<i>Total Fund Equity</i>		\$2,617,382
Total Liabilities & Equity		\$3,923,133

Lowcountry Council of Governments
Statement of Revenues and Expenditures
For the Period Ending May 2015

	Actual YTD	Revised Budget	Variance	%
Revenues				
Federal	\$4,106,417	4,338,201	(\$231,784)	.947
State Restricted	1,003,285	1,378,018	(374,733)	.728
State Unrestricted	39,109	42,664	(3,555)	.917
Local Restricted	697,464	763,650	(66,186)	.913
Local Unrestricted	136,120	148,195	(12,075)	.919
Other Sources	70,095	263,887	(193,792)	.266
Total Revenues	<u>\$6,052,490</u>	<u>6,934,615</u>	<u>(\$882,125)</u>	<u>.873</u>
Expenditures				
<i>Personnel and Related Costs</i>	2,107,362	\$2,301,457	(194,096)	.916
<i>Building and Related Costs</i>	220,794	253,998	(33,204)	.869
<i>Operating Costs</i>				
Advertising	9,004	\$11,350	(2,346)	.793
Contracts	3,366,057	3,957,087	(591,030)	.851
Depreciation	4,015	4,380	(365)	.917
Dues, Subscriptions & Publicat	13,686	14,699	(1,013)	.931
Equipment Maintenance & Lease	42,376	48,525	(6,149)	.873
Insurance & Bonding	10,213	11,500	(1,287)	.888
Meetings	4,339	5,570	(1,231)	.779
Miscellaneous	11,886	13,360	(1,474)	.890
Legal Fees	9,160	11,575	(2,415)	.791
Postage & Shipping	8,724	12,200	(3,476)	.715
Printing	25,232	28,900	(3,668)	.873
Supplies	39,021	41,140	(2,119)	.948
	<u>3,543,711</u>	<u>4,160,286</u>	<u>(616,575)</u>	<u>.852</u>
<i>Other Expenditures</i>				
Equipment Purchases	22,913	\$34,965	(12,052)	.655
Travel Costs	61,039	77,842	(16,803)	.784
Auto Costs	29,429	34,872	(5,443)	.844
Bad Debt	3,300	3,300	(0)	
	<u>116,681</u>	<u>150,979</u>	<u>(34,298)</u>	<u>.773</u>
Total Expenditures	<u>5,988,548</u>	<u>6,866,720</u>	<u>(878,172)</u>	<u>.872</u>
Revenues over Expenditures	<u>\$63,942</u>	<u>\$67,896</u>	<u>(3,954)</u>	<u>0.94</u>

LOWCOUNTRY COUNCIL OF GOVERNMENTS COMMUNITY AND ECONOMIC DEVELOPMENT ACTIVITIES CURRENT PROJECTS SUMMARY JUNE 2015

ACTIVE PROJECTS:	NUMBER	DOLLAR VALUE
CDBG Community Investment	20	\$ 9,828,872.00
CDBG Economic Development	1	\$ 50,000.00
CDBG Ready To Go	0	\$ -
CDBG Planning Grants	0	\$ -
EDA Public Works	3	\$ 2,395,200.00
EDA Planning Grants	1	\$ 58,500.00
RD Grants	1	\$ 50,000.00
HOME	17	\$ 2,354,423.00
TOTALS	43	\$ 14,736,995.00
Applications Requested	5	\$ 4,860,814.00

Note: EDA Title IX Loan Program Reports will be provided separately as received by Catawba Regional Planning Council.

Prepared by: Community and Economic Development

CURRENT PROJECTS

CDBG - BEAUFORT COUNTY

GRANTEE	PROJECT	STATUS	FUNDED AMOUNT	DRAWN TO DATE	BALANCE
Town of Bluffton	Buck Island-Simmons ville VR III	Startup cleared. Completed acquisition. Reviewing bid documents, preparing to bid.	\$ 500,000.00	\$ 34,995.00	\$ 465,005.00
City of Beaufort	NW Quadrant VR III	Construction underway.	\$ 500,000.00	\$ 261,241.00	\$ 238,759.00
Town of Bluffton	Possum Point Sewer	Startup cleared. Appraisal field visits being done. Design/permitting done.	\$ 320,000.00	\$ 5,000.00	\$ 315,000.00
			\$ 1,320,000.00	\$ 301,236.00	\$ 1,018,764.00

CDBG - COLLETON COUNTY

GRANTEE	PROJECT	STATUS	FUNDED AMOUNT	DRAWN TO DATE	BALANCE
City of Walterboro	Lemacks VR II	Programmatically closed. Waiting on final audit clearance.	\$ 500,000.00	\$ 500,000.00	\$ -
Colleton County	Colleton Demo	Programmatically closed. Completed under budget. Waiting on final audit clearance.	\$ 285,300.00	\$ 186,679.00	\$ 98,621.00
City of Walterboro	South Jefferies Streetscape	Bids due 6/15/15	\$ 500,000.00	\$ 10,000.00	\$ 490,000.00
City of Walterboro	Hampton St Water Line Ext	Bids rec'd 6/2/15. Letter of rec & contract being prepped for second low bidder.	\$ 750,000.00	\$ 16,500.00	\$ 733,500.00
City of Walterboro	Lemacks VR III	Asbestos testing done. Exterior rehab being performed week of 6/15/15. Consultant contract for trial design under review w DGA.	\$ 500,000.00	\$ 59,307.00	\$ 440,693.00
			\$ 2,535,300.00	\$ 772,486.00	\$ 1,762,814.00

2/10

CURRENT PROJECTS

REQUESTED

GRANTEE	PROJECT	STATUS	AMOUNT REQUESTED
Beaufort County (CDBG)	Seabrook Water	Application withdrawn.	
Colleton County (CDBG)	Bama Road Drainage	Submitted Application.	\$ 750,000.00
Colleton County/City of Walterboro (EDA)	Infrastructure to support company.	Received Further Consideration Letter	\$ 780,000.00
Town of Hampton (CDBG)	Sewer Rehab	Submitted Application.	\$ 666,814.00
City of Hardeeville (CDBG)	Drainage Focus Area 2	Submitted Application.	\$ 624,000.00
Jasper County (CDBG)	Deerfield Waterline Ext	Application withdrawn.	
City of Walterboro (EDA)	WWTP Upgrade	Submitted Application.	\$ 2,040,000.00
			\$ 4,860,814.00

EDA

GRANTEE	PROJECT	STATUS	FUNDED AMOUNT	DRAWN TO DATE	BALANCE
Beaufort County	Penn Center Purchase and renovation of hotel/restaurant.	Close out complete. Gov. performance results tracking.	\$ 544,700.00	\$ 544,700.00	\$ -
Colleton County	Technical Training Center	GPRA Tracking completed.	\$ 1,252,500.00	\$ 1,252,500.00	\$ -
Hampton County	Job Training Center Renovation	Close out paper work submitted and approved. GPRA Reporting.	\$ 598,000.00	\$ 598,000.00	\$ -
Jasper County	LCOG/EDA Planning Grant	New award.	\$ 58,500.00	\$ -	\$ 58,500.00
			\$ 2,453,700.00	\$ 2,395,200.00	\$ 58,500.00

RD Grants

GRANTEE	PROJECT	STATUS	FUNDED AMOUNT	DRAWN TO DATE	BALANCE
Hampton County	Town of Hampton Old Bank Demo	Completed.	\$ 50,000.00	\$ 50,000.00	\$ -
			\$ 50,000.00	\$ 50,000.00	\$ -

0/17

CURRENT PROJECTS

CDBG - HAMPTON COUNTY

GRANTEE	PROJECT	STATUS	FUNDED AMOUNT	DRAWN TO DATE	BALANCE
Town of Estill	Ruth Street Sewer Improvement	Construction completed. Project amendment underway. ERR cleared.	\$ 500,000.00	\$ 180,649.00	\$ 319,351.00
Town of Brunson	Water Tank Improvements	Phase 1 construction underway.	\$ 347,474.00	\$ 299,052.00	\$ 48,422.00
Hampton County	DHEC Health Clinic	Received Slow Progress letter, response and revised timeline due 6/19/15. Bid in July.	\$ 500,000.00	\$ 12,000.00	\$ 488,000.00
Hampton County	Brunson Gifford Water Connection	Startup & ERR underway. JD done and sent to ACE. Acquisition beginning.	\$ 1,000,000.00	\$ -	\$ 1,000,000.00
Town of Yemassee	Sewer Line Upgrade	Startup underway/RFP engineering/ERR underway. Project Amendment being prepared.	\$ 750,000.00	\$ -	\$ 750,000.00
Hampton County (ED)	Elliott Sawmilling Rail Expansion	Programmatically closed. Waiting on final audit clearance.	\$ 165,000.00	\$ 165,000.00	\$ -
Hampton County	2013 CDBG Regional Planning	Submitted close-out.	\$ 50,000.00	\$ 50,000.00	\$ -
Hampton County	2014 CDBG Regional Planning	Ongoing.	\$ 50,000.00	\$ -	\$ 50,000.00
			\$ 3,362,474.00	\$ 706,701.00	\$ 2,655,773.00

CDBG - JASPER COUNTY

GRANTEE	PROJECT	STATUS	FUNDED AMOUNT	DRAWN TO DATE	BALANCE
City of Hardeeville	Hardeeville Drainage	Programmatically closed.	\$ 500,000.00	\$ 500,000.00	\$ -
Town of Ridgeland	First Ave Pump Station Upgrade	Programmatically closed.	\$ 322,648.00	\$ 322,648.00	\$ -
Jasper County	DHEC Addition	Close-out submitted.	\$ 500,000.00	\$ 488,795.00	\$ 11,205.00
Jasper County	Old Bailey Sewer Extension	Design complete. Acquisition of some in condemnation.	\$ 389,050.00	\$ 10,530.00	\$ 378,520.00
City of Hardeeville	Hardeeville Library	Preparing to bid. ERR Affirmation submitted.	\$ 500,000.00	\$ 12,000.00	\$ 488,000.00
Town of Ridgeland	Wise St. Pump Station Upgrade	Second low bidder, contract being prepped.	\$ 399,400.00	\$ 10,800.00	\$ 388,600.00
			\$ 2,611,098.00	\$ 1,344,773.00	\$ 1,266,325.00
CDBG TOTALS - ALL COUNTIES			\$ 9,828,872.00	\$ 3,125,196.00	\$ 6,703,676.00

3/4

CURRENT PROJECTS

HOME - BEAUFORT COUNTY

GRANTEE	PROJECT	STATUS	FUNDED AMOUNT	DRAWN TO DATE	BALANCE
Jasper County Neighbors United JCNU	Single Family Rehab	PROJECT COMPLETED - 8 units	\$ 165,450.00	\$ 164,581.00	\$ 869.00
LowCountry Habitat for Humanity	New Construction	2 completed, 2 under construction	\$ 100,000.00	\$ 45,750.00	\$ 54,250.00
Town of Blufton	Single Family Rehab	2 completed, 2 under construction	\$ 114,129.00	\$ 69,471.00	\$ 44,658.00
Beaufort Jasper Equal Opportunity Commission	Single Family Rehab	completed 5 units	\$ 150,000.00	\$ 122,394.00	\$ 27,606.00
Beaufort County	Single Family Rehab	contract signed	\$ 114,070.00	\$ -	\$ 114,070.00
City of Beaufort	Single Family Rehab	1 under construction.	\$ 150,000.00	\$ 42,830.00	\$ 107,170.00
			\$ 793,649.00	\$ 445,026.00	\$ 348,623.00

HOME - COLLETON COUNTY

GRANTEE	PROJECT	STATUS	FUNDED AMOUNT	DRAWN TO DATE	BALANCE
City of Walterboro	Single Family Rehab	Final unit started	\$ 150,000.00	\$ 150,000.00	\$ -
Colleton County	Single Family Rehab #1	3 units completed	\$ 100,000.00	\$ 100,000.00	\$ -
Colleton County	Single Family Rehab #2	3 units completed	\$ 114,127.00	\$ 85,213.00	\$ 28,914.00
			\$ 364,127.00	\$ 335,213.00	\$ 28,914.00

5/5

CURRENT PROJECTS

HOME - HAMPTON COUNTY

GRANTEE	PROJECT	STATUS	FUNDED AMOUNT	DRAWN TO DATE	BALANCE
Town of Hampton	Single Family Rehab	PROJECT COMPLETED 6 units	\$ 100,000.00	\$ 100,000.00	\$ -
Hampton County	Single Family Rehab	PROJECT COMPLETED 10 units	\$ 225,000.00	\$ 225,000.00	\$ -
Town of Yemassee	Single Family Rehab	Accepting applications	\$ 150,000.00	\$ 122,348.00	\$ 27,652.00
Hampton County	Single Family Rehab	5 completed, 2 underway	\$ 196,647.00	\$ 196,099.00	\$ 548.00
			\$ 671,647.00	\$ 643,447.00	\$ 28,200.00

HOME - JASPER COUNTY

GRANTEE	PROJECT	STATUS	FUNDED AMOUNT	DRAWN TO DATE	BALANCE
Jasper County	Single Family Rehab	5 units completed	\$ 150,000.00	\$ 143,666.00	\$ 6,334.00
JCNU	Single Family Rehab	COMPLETED 42 unit complex	\$ 150,000.00	\$ 150,000.00	\$ -
JCNU CHDO	Single Family Rehab	Project completed 5 units	\$ 125,000.00	\$ 125,000.00	\$ -
			\$ 425,000.00	\$ 418,666.00	\$ 6,334.00

HOME - ALL COUNTIES

GRANTEE	PROJECT	STATUS	FUNDED AMOUNT	DRAWN TO DATE	BALANCE
ALL COUNTIES	*REGION WIDE DOWNPMT ASSISTANCE - 10 UNITS	Cannot qualify homebuyers	\$ 100,000.00	\$ 7,500.00	\$ 92,500.00
*Having problems qualifying homebuyers. May amend program to use funds in housing rehab.					
			\$ 100,000.00	\$ 7,500.00	\$ 92,500.00

HOME TOTALS			\$ 2,354,423.00	\$ 1,849,852.00	\$ 504,571.00
--------------------	--	--	------------------------	------------------------	----------------------

6/16

Lowcountry 208 Certifications: 2014 and 2015 Monthly Comparison

2014	208 Certifications	Number of Housing Units	Other Buildings		2015	208 Certifications	Number of Housing Units	Other Buildings
January	3	0	Industrial. Fire Station, Jelly Fish Processing		January	7	133	Medical Building
February	2	0	USCB Rec Center, forest road		February	6	300	Dialysis Clinic
March	1	0	Crystal Lake Park		March	3	302	Fire Station
April	1	56			April	1	74	
May	4	100	School, Commercial Building		May	2		Commercial Projects
June	3	46	System upgrade, jellfish processing plant (conditional approval)		June	1	29	
Year-to-date	14	202			Year-to-date	20	838	



6 SNAKE ROAD, OKATIE, SC 29909-3937
Phone 843.987.9292 Fax 843.987.9293
Customer Service 843.987.9200
Operations & Maintenance 843.987.9220
Engineering 843.987.9250
www.bjwsa.org

ED SAXON, PE, GENERAL MANAGER
843.987.9249 (o) | 843.263.1924 (c)

June 12, 2015

Ms. Ginnie Kozak
Low Country Council of Governments
Post Office Box 98
Yemassee, South Carolina 29945

Re: Request for 208/201 Plan Conformance Certification

Dear Ginnie:

Please review the following project and complete Section 11.

1. Project Name: Palmetto Bluff Branded Residential
2. County: Beaufort
3. General Location: See attached map.
4. Type of Action for Review: Construction Permit request.
5. Project Type: Grinder pump station and sanitary sewer to 29 residential services
6. Type Waste: Domestic wastewater.
7. Disposal Method: 8,900 GPD to be treated at the Palmetto Bluff WWTP.
8. Consulting Engineer: Mike Hughes, PE, Thomas and Hutton, Phone: 912-234-5300.
9. BJWSA Contact: Dick Deuel, Development Projects Manager, Phone: 843-987-9265.
10. BJWSA has reviewed the project and it is in conformance with the 208/201 Plan.
11. This project is not in conformance with the 208 Plan.

Ginnie Kozak, Planning Director
Signature of Certifying Officer and Title

June 12, 2015
Date

Please return with any attached comments to BJWSA and the Consulting Engineer at 50 Park of Commerce Way, Savannah, GA 31405. Fax #912-234-5300.

Attached – Check #80066 in the amount of \$230 and location map.

BRANDY M. GRAY
CHAIR

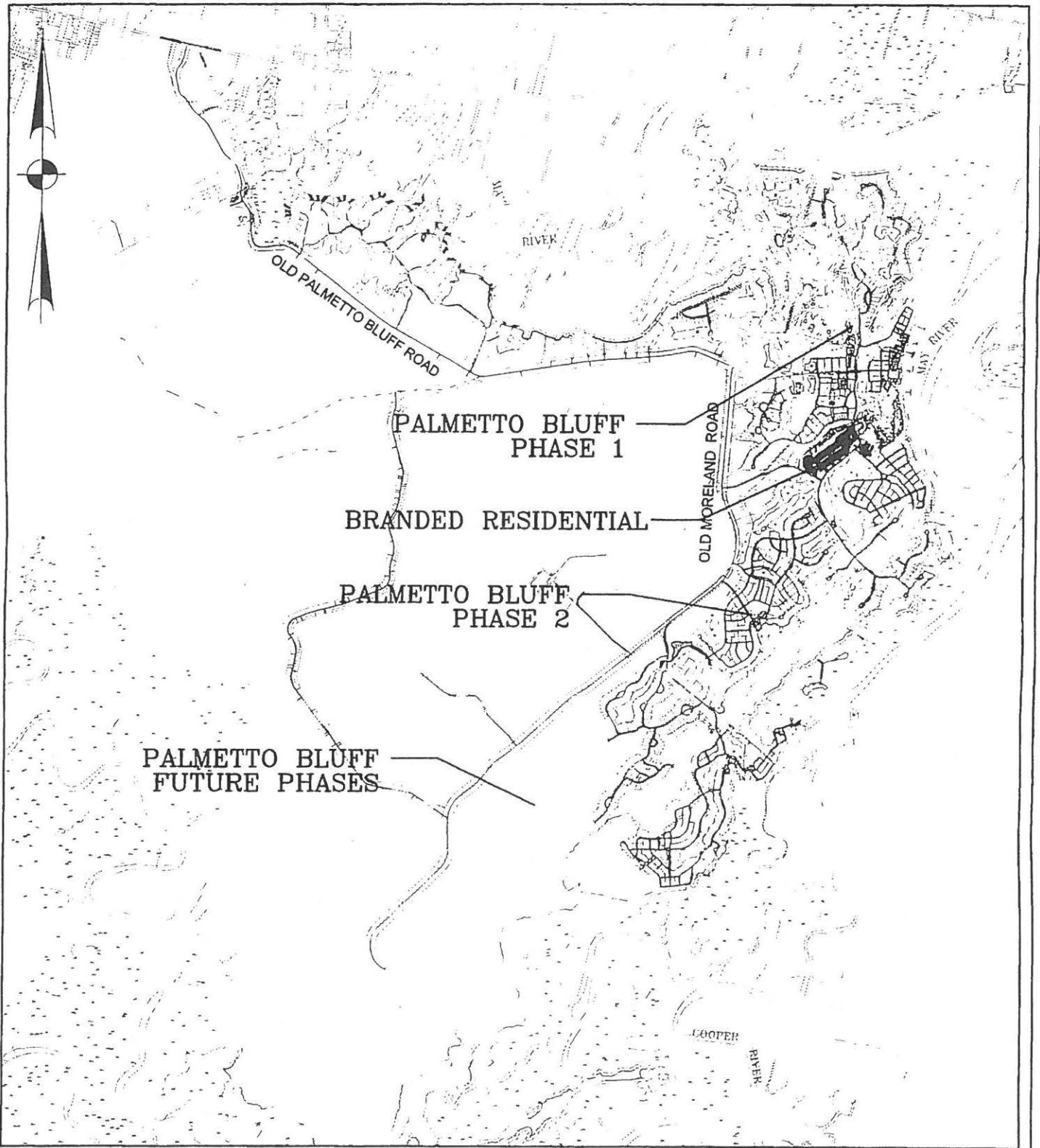
DONNA L. ALTMAN
JOHN D. ROGERS
W.R. "SKEET" VON HARTEN

MICHAEL L. BELL
VICE CHAIR

DAVID S. LOTT
JAMES N. SCOTT
VACANCY

LORRAINE W. BOND
SECRETARY/TREASURER

JAMES P. "PAT" O'NEAL
DR. WILLIAM SINGLETON



PALMETTO BLUFF - BRANDED RESIDENTIAL

BLUFFTON, S.C.
VICINITY MAP
DATE: MAY 2015
SOURCE: THOMAS & HUTTON ENGINEERING CO.

SCALE:
1" = 5000'±
DATUM:
MEAN SEA LEVEL

PROPOSED ACTIVITY:
RESIDENTIAL DEVELOPMENT
COUNTY:
BEAUFORT COUNTY
APPLICANT:
MAY RIVER FOREST, LLC