

**COUNTY COUNCIL
OF BEAUFORT COUNTY
SOUTH CAROLINA**

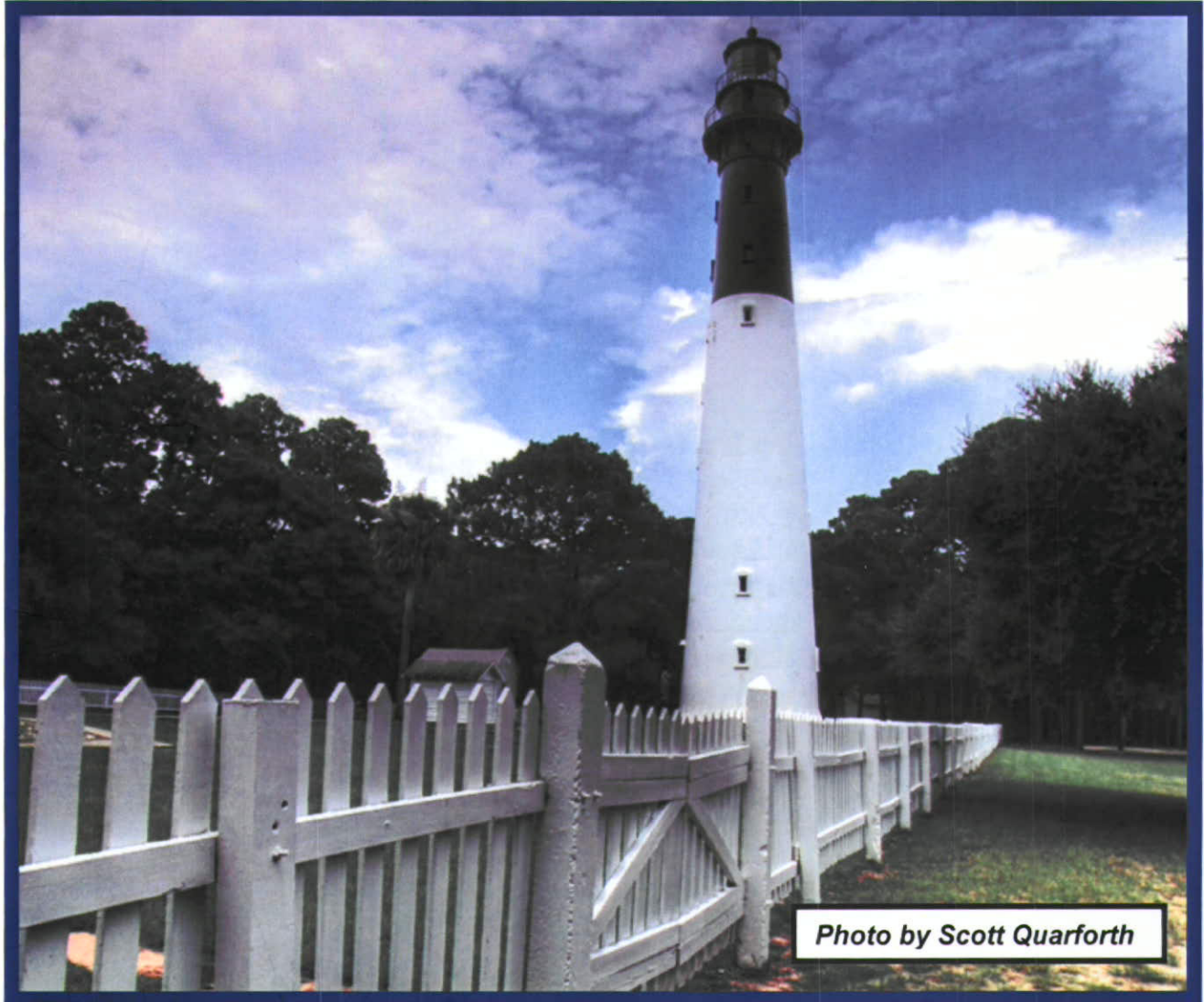


Photo by Scott Quarforth

**COMPREHENSIVE ANNUAL FINANCIAL REPORT
FOR THE YEAR ENDED
JUNE 30, 2009**

**Comprehensive Annual
Financial Report
of
Beaufort County, South Carolina
For the Year Ended
June 30, 2009**

Issued by

**Beaufort County Finance Department
Post Office Box 1228
Beaufort, South Carolina 29901-1228**



Photo by Scott Hansen

This photo was taken on Independence Day at the Parris Island Marine Corps Recruit Depot where thousands of young people are shaped into new Marines each year. Their families come from all over the US to attend graduation ceremonies each Friday and enjoy staying in local hotels and dining in local restaurants during their visit. They also tour local historic sites such as the Parris Island Marine Corps Museum.

BEAUFORT COUNTY, SOUTH CAROLINA
 COMPREHENSIVE ANNUAL FINANCIAL REPORT
 FISCAL YEAR ENDED JUNE 30, 2009
 TABLE OF CONTENTS

	<u>Page</u>
<u>Introductory Section</u>	
Letter of Transmittal	1 - 5
Organizational Chart	6
Elected and Appointed Officials.....	7
 <u>Financial Section</u>	
Independent Auditor's Report.....	8 - 9
Management's Discussion and Analysis.....	10 - 26
Basic Financial Statements:	
Exhibit 1 - Statement of Net Assets.....	27
Exhibit 2 - Statement of Activities.....	28 -29
Exhibit 3 - Balance Sheet – Governmental Funds; Reconciliation of the Balance Sheet of Governmental Funds to the Statement of Net Assets	30 - 32
Exhibit 4 - Statement of Revenues; Expenditures and Changes in Fund Balances Governmental Funds; Reconciliation of the Statement of Revenues, Expenditures and Changes in Fund Balances of Governmental Funds to the Statement of Activities	33 - 35
Exhibit 5 - Statement of Revenues, Expenditures and Changes in Fund Balances Budget (GAAP Basis) and Actual – General Fund	36
Exhibit 6 - Statement of Net Assets Proprietary Funds.....	37
Exhibit 7 - Statement of Revenues, Expenses and Changes in Fund Net Assets Proprietary Funds.....	38
Exhibit 8 - Statement of Cash Flows Proprietary Funds	39 - 40
Exhibit 9 - Statement of Fiduciary Net Assets Agency Funds	41
Notes to the Financial Statements	42 - 68
Required Supplementary Information:	
Schedule 1 - Schedule of Funding Progress for the Retiree Health Plan.....	69
Other Supplementary Information:	
Schedule A-1 - Schedule of Revenues - Budget and Actual General Fund	70 - 71
Schedule A-2 - Schedule of Expenditures - Budget and Actual General Fund.....	72 - 80
Schedule B-1 - Balance Sheet Nonmajor Governmental Funds	81
Schedule B-2 - Statement of Revenues, Expenditures and Changes in Fund Balances Nonmajor Governmental Funds	82
Schedule C-1 - Combining Balance Sheet All Nonmajor Special Revenue Funds.....	83 - 84
Schedule C-2 - Combining Statement of Revenues, Expenditures and Changes in Fund Balances - Budget and Actual All Nonmajor Special Revenue Funds.....	85 - 92
Schedule C-3 - Combining Balance Sheet - Nonmajor Special Revenue Funds - General Government Grants	93 - 94
Schedule C-4 - Combining Statement of Revenues, Expenditures and Changes in Fund Balances - Nonmajor Special Revenue Funds - General Government Grants.....	95 - 108
Schedule C-5 - Combining Balance Sheet - Nonmajor Special Revenue Funds - Public Safety Grants	109 - 110
Schedule C-6 - Combining Statement of Revenues, Expenditures and Changes in Fund Balances - Nonmajor Special Revenue Funds - Public Safety Grants	111 - 130
Schedule C-7 - Combining Balance Sheet - Nonmajor Special Revenue Funds - Public Works Programs.....	131 - 132

BEAUFORT COUNTY, SOUTH CAROLINA
 COMPREHENSIVE ANNUAL FINANCIAL REPORT
 FISCAL YEAR ENDED JUNE 30, 2009
 TABLE OF CONTENTS

Page

Financial Section – Continued

Schedule C-8 - Combining Statement of Revenues, Expenditures and Changes in Fund Balances - Nonmajor Special Revenues Funds - Public Works Programs.....	133 - 141
Schedule C-9 - Combining Balance Sheet - Nonmajor Special Revenue Funds - Alcohol and Drug Programs	142 - 143
Schedule C-10 - Combining Statement of Revenues, Expenditures and Changes in Fund Balances - Nonmajor Special Revenues Funds – Alcohol and Drug Programs.....	144 - 150
Schedule C-11 - Combining Balance Sheet - Nonmajor Special Revenue Funds - Disabilities and Special Needs Programs	151 - 152
Schedule C-12 - Combining Statement of Revenues, Expenditures and Changes in Fund Balances - Nonmajor Special Revenues Funds – Disabilities and Special Needs Programs	153 - 168
Schedule C-13 - Combining Balance Sheet - Nonmajor Special Revenue Funds - Public Welfare Programs.....	169 - 170
Schedule C-14 - Combining Statement of Revenues, Expenditures and Changes in Fund Balances - Nonmajor Special Revenues Funds - Public Welfare Programs.....	171 - 176
Schedule C-15 - Combining Balance Sheet - Nonmajor Special Revenue Funds - Cultural and Recreation Programs	177 - 178
Schedule C-16 - Combining Statement of Revenues, Expenditures and Changes in Fund Balances - Nonmajor Special Revenues Funds - Cultural and Recreation Programs	179 - 188
Schedule D-1 - Combining Balance Sheet All Nonmajor Debt Service Funds	189
Schedule D-2 - Combining Balance of Revenues, Expenditures and Changes in Fund Balances - Budget and Actual All Nonmajor Debt Service Funds.....	190 - 192
Schedule E-1 - Combining Balance Sheet All Nonmajor Capital Project Funds.....	193 - 194
Schedule E-2 - Combining Balance of Revenues, Expenditures and Changes in Fund Balances - Budget and Actual All Nonmajor Capital Project Funds	195 - 203
Schedule F - Combining Statement of Changes in Assets and Liabilities All Agency Funds.....	204 - 210
Schedule G - Schedule of Fines, Fees, Assessments and Surcharges	211

BEAUFORT COUNTY, SOUTH CAROLINA
 COMPREHENSIVE ANNUAL FINANCIAL REPORT
 FISCAL YEAR ENDED JUNE 30, 2009
 TABLE OF CONTENTS

Statistical Section

Table 1 - Net Assets by Component.....	212
Table 2 - Changes in Net Assets.....	213 - 215
Table 3 - Fund Balances Governmental Funds.....	216 - 217
Table 4 - Changes in Fund Balances Governmental Funds.....	218 - 219
Table 5 - Assessed Value and Market Value of Taxable Property.....	220
Table 6 - Property Tax Millages-All Overlapping Governments.....	221
Table 7 - Property Tax Levies and Collections.....	222
Table 8 - Ten Largest Taxpayers.....	223
Table 9 - Ratios of General Bonded Debt Outstanding.....	224
Table 10 - Computation of Legal Debt Margin.....	225
Table 11 - Legal Debt Margin Detail.....	226
Table 12 - Ratios of Outstanding Debt by Type.....	227
Table 13 - Pledged Revenue Coverage.....	228
Table 14 - Computation of Overlapping General Obligation Debt.....	229
Table 15 - Demographic and Economic Statistics.....	230
Table 16 - Principal Employers.....	231
Table 17 - Full-Time Equivalent Employees by Function.....	232
Table 18 - Capital Asset Statistics by Function.....	233
Table 19 - Operating Indicators by Function.....	234

Single Audit Section

Schedule of Expenditures of Federal Awards.....	235
Report on Internal Control over Financial Reporting and on Compliance and Other Matters Based on an Audit of Financial Statements Performed in Accordance with Government Auditing Standards.....	236 - 237
Report on Compliance with Requirements Applicable to each Major Program and Internal Control over Compliance in Accordance with OMB Circular A-133.....	238 - 239
Schedule of Findings and Questioned Costs.....	240 - 241



Photo by David Youna

Chef David Young prepares authentic Gullah cuisine at a popular Hilton Head Island restaurant. He has also authored a cookbook and his expertise is an asset in this popular resort town.

Introductory Section

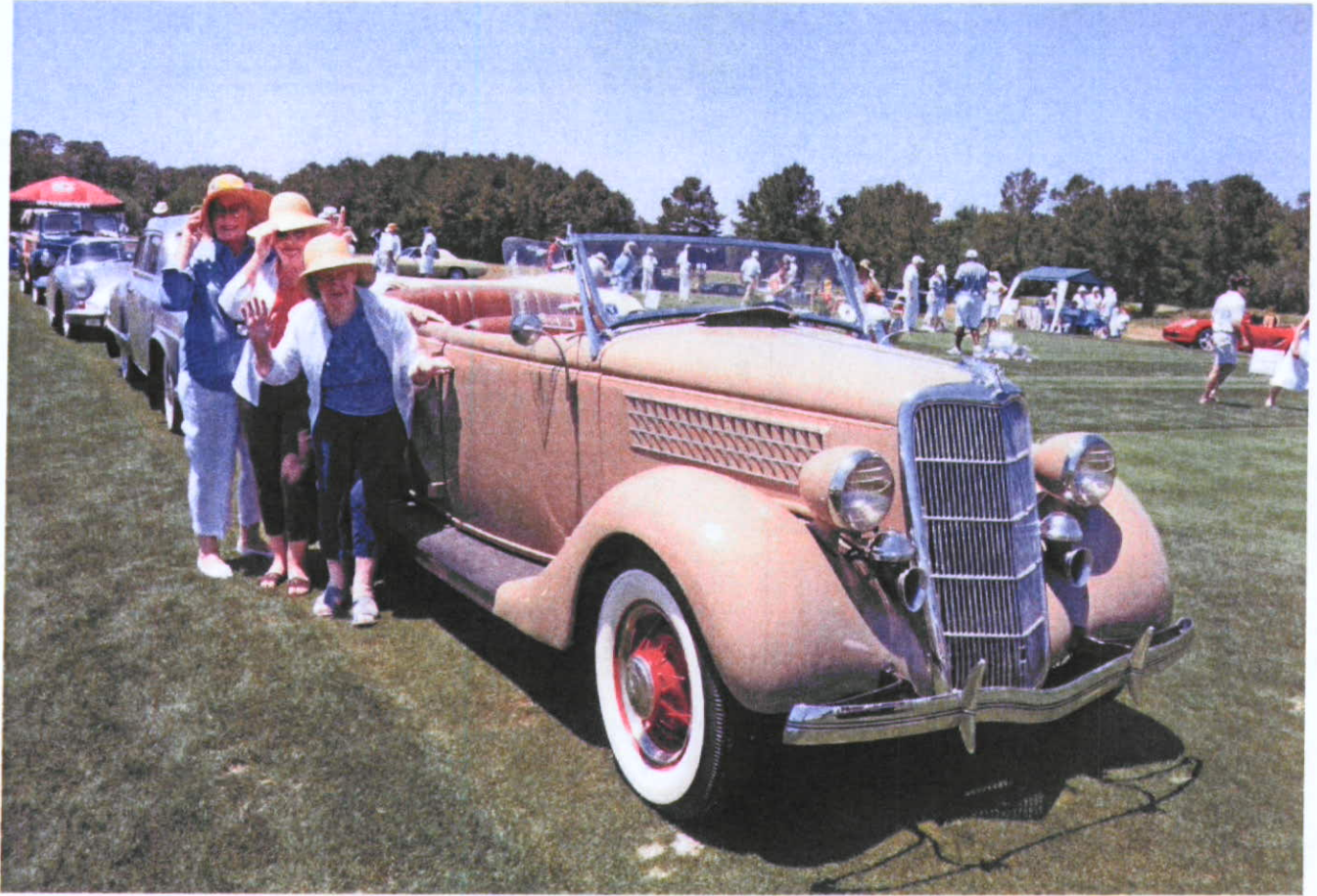


Photo by Richard Santee

The Concours d'Elegance, held annually on Hilton Head Island, attracts classic and exotic automobile enthusiasts from all over.