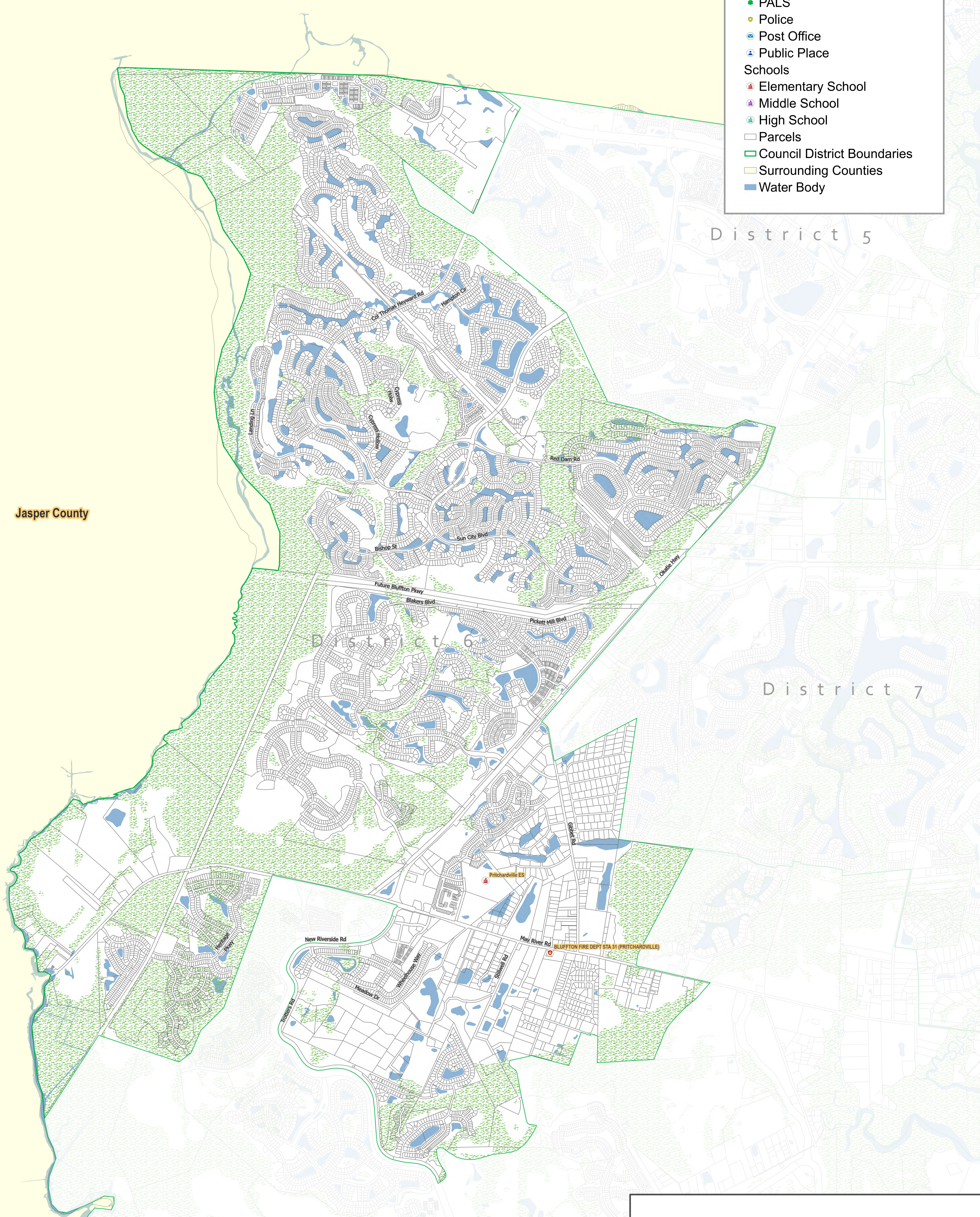
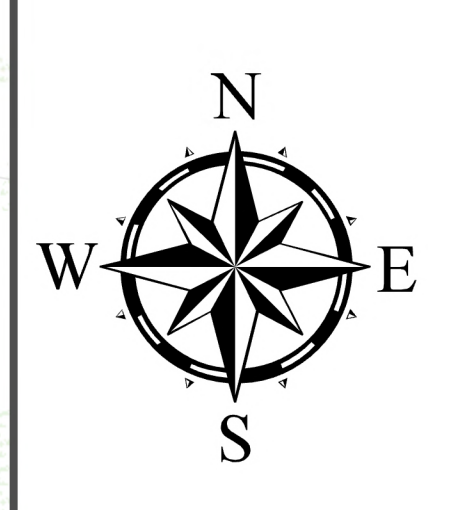


- Facilities Categories**
- Boat Landing
 - Convenience Center
 - Emergency Medical Services
 - Fire Department Facility
 - Library
 - PALS
 - Police
 - Post Office
 - Public Place
- Schools**
- Elementary School
 - Middle School
 - High School
- Parcels
 - Council District Boundaries
 - Surrounding Counties
 - Water Body



Beaufort County Council District 6



Prepared by: Beaufort County GIS
June 3, 2024

