

# COUNTY COUNCIL OF BEAUFORT COUNTY

ADMINISTRATION BUILDING  
100 RIBAUT ROAD  
POST OFFICE DRAWER 1228  
BEAUFORT, SOUTH CAROLINA 29901-1228  
TELEPHONE: (843) 255-2180  
FAX: (843) 255-9401  
www.bcgov.net

WM. WESTON J. NEWTON  
CHAIRMAN

D. PAUL SOMMERVILLE  
VICE CHAIRMAN

## COUNCIL MEMBERS

STEVEN M. BAER  
RICK CAPORALE  
GERALD DAWSON  
BRIAN E. FLEWELLING  
HERBERT N. GLAZE  
WILLIAM L. McBRIDE  
STEWART H. RODMAN  
GERALD W. STEWART  
LAURA VON HARTEN

GARY KUBIC  
COUNTY ADMINISTRATOR

BRYAN J. HILL  
DEPUTY COUNTY ADMINISTRATOR

JOSHUA A. GRUBER  
COUNTY ATTORNEY

SUZANNE M. RAINEY  
CLERK TO COUNCIL

## AGENDA PUBLIC FACILITIES COMMITTEE

Tuesday, August 21, 2012  
3:30 p.m.  
Executive Conference Room  
Administration Building

### Committee Members:

Herbert Glaze, Chairman  
Steven Baer, Vice Chairman  
Gerald Dawson  
Brian Flewelling  
William McBride  
Jerry Stewart

### Staff Support:

Rob McFee, Division Director

1. CALL TO ORDER – 3:30 P.M.
2. A RESOLUTION OF THE COUNTY COUNCIL OF BEAUFORT COUNTY TO ADOPT GEOGRAPHICAL BOUNDARIES FOR A BEAUFORT COUNTY AND JASPER COUNTY METROPOLITAN PLANNING AREA AND TO CREATE A METROPOLITAN PLANNING ORGANIZATION ([backup Municipal resolutions](#))
3. ADJOURNMENT

A quorum of Council may be in attendance at all Committee meetings.  
Please silence your cell phone during the meeting.

## RESOLUTIONS

# ADOPTING GEOGRAPHICAL BOUNDARIES FOR A BEAUFORT COUNTY AND JASPER COUNTY METROPOLITAN PLANNING AREA AND TO CREATE A METROPOLITAN PLANNING ORGANIZATION

**Town of Hilton Head Island** ([backup](#))

**Town of Bluffton** ([backup](#))

**City of Beaufort** ([backup](#))

**Town of Port Royal** ([backup](#))

**A RESOLUTION OF THE TOWN COUNCIL OF THE TOWN OF HILTON HEAD ISLAND TO ADOPT GEOGRAPHICAL BOUNDARIES FOR A BEAUFORT COUNTY AND JASPER COUNTY METROPOLITAN PLANNING AREA AND TO CREATE A METROPOLITAN PLANNING ORGANIZATION**

**WHEREAS**, in March 2012, the Bureau of the Census defined a new Urbanized Area, based on the 2010 Census, when the combined population of the Town of Hilton Head Island, the Town of Bluffton, and parts of unincorporated Beaufort County reached over 50,000; and

**WHEREAS**, 23 CFR Section 450.310(a) requires that a Metropolitan Planning Organization (MPO) be designated for each Urbanized Area with a population of more than 50,000 individuals as determined by the Bureau of the Census; and

**WHEREAS**, the purpose of the MPO is to carry out a continuing, cooperative, and comprehensive multimodal transportation planning process, including the development of a metropolitan transportation plan and a transportation improvement program that encourages and promotes the safe and efficient development, management, and operation of surface transportation systems to serve the mobility needs of people and freight (including accessible pedestrian walkways and bicycle transportation facilities) and foster economic growth and development, while minimizing transportation-related fuel consumption and air pollution; and

**WHEREAS**, the MPO is a policy board of the organization created and designated to carry out the metropolitan transportation planning process and act as the forum for cooperative decision making by the principal elected officials of the units of general purpose local government; and

**WHEREAS**, this Policy Board shall be governed by its own bylaws and shall consist of the following voting members:

Town of Hilton Head Island Mayor or designee	(1)
Town of Bluffton Mayor or designee	(1)
Town of Port Royal Mayor or designee	(1)
City of Beaufort Mayor or designee	(1)
City of Hatterasville Mayor or designee	(1)
Beaufort County Council Chairman or designee	(1)
Jasper County Council Chairman or designee	(1)
Beaufort County Legislative Delegation Representative	(1)
Jasper County Legislative Delegation Representative	(1)
SC Transportation Commissioner within MPA	(2)

and the following ex-officio, non-voting members:

LRTA Executive Director or designee	(1)
SCDOT staff	(1)

**WHEREAS**, funds are provided by the Federal government through the State to accomplish required activities of the MPO; and

**WHEREAS**, the MPO designation shall be made by agreement between the Governor and units of general purpose local government that together represent at least 75 percent of the affected population; and

**WHEREAS**, the Metropolitan Planning Area (MPA) boundaries in which the metropolitan transportation planning process is carried out by the MPO shall encompass the entire existing Urbanized Area plus the contiguous area expected to become urbanized within a 20 year forecast period for the metropolitan transportation plan. This area will include all or some portion of the above-referenced governmental entities; and

**WHEREAS**, the MPA boundaries may be established to coincide with the geography of regional economic development and growth forecasting areas; and

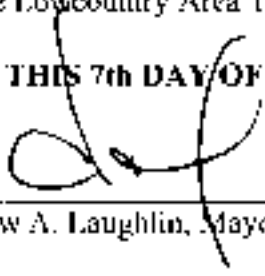
**WHEREAS**, Lowcountry Council of Governments (LCOG) has traditionally coordinated transportation planning and federal transportation fund distribution in a multi-county area; and

**WHEREAS**, LCOG should retain the role of coordinating transportation planning and federal fund distribution to the designated multi-county area by becoming the fiscal agent and lead agency for coordination of the MPO, with assistance from the participating governments and public transit organization.


**NOW, THEREFORE BE IT, AND IT HEREBY IS RESOLVED BY THE TOWN COUNCIL FOR THE TOWN OF HILTON HEAD ISLAND, SOUTH CAROLINA, THAT** Council approves and agrees as follows:

1. The MPA boundaries as designated on the Attachment, subject to final "smoothing" of the area perimeter; and
2. The creation of the MPO, with Policy Board as constituted above; and
3. To be a member of and participate in the activities of the MPO; and
4. To contribute a portion of the local matching funds required to establish and operate the MPO, equal to its per capita share of the MPA's current population; and
5. The designation of Lowcountry Council of Governments as fiscal agent and entity leading and coordinating the MPO; and
6. The name of the MPO shall be the Lowcountry Area Transportation Study.

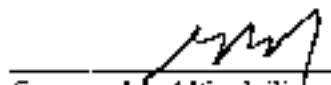
**MOVED, APPROVED, AND ADOPTED ON THIS 7th DAY OF August, 2012.**

  
\_\_\_\_\_  
Drew A. Laughlin, Mayor

ATTEST:

  
Victoria L. Pfannensticht, Acting Town Clerk

APPROVED AS TO FORM:

  
\_\_\_\_\_  
Gregory M. Alford, Town Attorney

Introduced by Council Member: KENNETH S. HEITZKE



# MEMORANDUM

**TO:** Town Council

**VIA:** Stephen G. Riley, ICMA-CM, Town Manager

**FROM:** Jill Foster, Deputy Director of Community Development

**RE:** Proposed Metropolitan Planning Area Boundaries and creation of a Metropolitan Planning Organization

**CC:** Charles Cousins, Scott Liggett, Darrin Shoemaker

**DATE:** July 20, 2012

---

**Recommendation:** That the Council adopt Metropolitan Planning Area (MPA) boundaries; create a Metropolitan Planning Organization (MPO) and policy board; and designate the Lowcountry Council of Governments (LCOG) as the lead agency to coordinate the MPO.

- *MPA Boundaries:* See attached Map.
- *Lead Agency:* It is recommended that the Lowcountry Council of Governments take the lead in operating the MPO. This agency currently oversees transportation planning on a regional basis and also receives federal funding for the rural part of the region. Staffing for this organization would be headed by LCOG with assistance from various other governmental staff as per a written agreement.
- *MPO Policy Board:* See attached Resolution. 23 USC 134 requires the following membership:
  - o *Local elected officials.*
  - o *Officials of public agencies that operate major modes of transportation in the metropolitan area.*
  - o *Appropriate state officials.*

**Summary:** A Metropolitan Planning Organization is a transportation policymaking organization made up of representatives from local government and transportation authorities. MPOs were created in order to ensure that existing and future expenditures for transportation projects and programs were based on a comprehensive, cooperative, and continuing (3-C) planning process. The role of the MPO includes: establishing a local forum for transportation decision making; evaluating transportation alternatives; developing and updating a long range transportation plan; developing a Transportation Improvement Program (TIP); and getting the public involved. Each MPO long range plan and TIP is encompassed into the State's plans and programs. Funds from the Federal Highway Administration are distributed to the State and then to MPOs for these transportation projects.

#### **MPA Boundary Justification:**

- Boundaries are outlined on the attached map and include the required Urbanized Area (UZA) of Hilton Head Island, Bluffton, and portions of southern Beaufort County.
- The area also includes those areas expected to urbanize within the next 20 years which coincide with the geography of regional economic development and growth forecasting areas (Hardeeville, portions of Jasper County, Beaufort, Port Royal, and portions of northern Beaufort County).
- Cooperative transportation planning would be provided comprehensively and regionally instead of by political jurisdictions.
- These boundaries allow for inclusion of entire US 278 corridor to I-95 within the planning boundary of the MPO as well as the proposed port area in Jasper County
- Significant portions of land along US 278 corridor have been permitted for residential & commercial growth in Hardeeville which would allow joint & cooperative planning of the US 278 corridor.
- These boundaries facilitate existing cooperative planning currently underway between Hardeeville and Beaufort County on Bluffton Parkway Phases 6 & 7.
- These boundaries support interest in continuous planning of the US 278 corridor that serves as primary access route for southern Beaufort County.
- SC 170 corridor is a potential high growth area and can be better served with comprehensive planning from both sides of Broad River.
- These boundaries limit duplicate staff efforts for planning in separate areas.

#### **Funding:**

There are various monies available for start-up funds, operating funds, and project funds, based on the population of the Urbanized Area:

- 'Start-up' money is available from the state for operating costs. We would apply for this start-up money through the SCDOT Secretary this summer.
- Annual operating money is available from the Federal Government (called PL funds). We would receive these on a federal fiscal year cycle. Conversations with the two smallest existing MPOs indicate they get \$155,000-155,000 per year in PL funds for operating expenses, and our MPO would be required to have a 20% match to these funds. We will be notified of our funding amount before March 2013.
- Other federal monies are given to MPOs for the actual transportation projects. We anticipate an estimated \$2.4 million might be given to our MPO, based on data from the other two small MPOs in the state. We will be notified of our funding amount before March 2013. Only enhancement-type funds require a 20% local match.
- An agreement between the participating jurisdictions would determine the percentage of matching funds from each governmental jurisdiction for operating and capital costs.

#### **Schedule:**

*By August 30, 2012:*

- Boundaries for the MPA must be submitted to the Governor (via SCDOT) for approval. Boundaries shall be determined by agreement between the MPO and the Governor.
- Apply for start up money from state through State Planning and Research (SPR), National Highway System (NHS), Surface Transportation Program (STP) and Minimum Guarantee (MG) funds.

*By October 2012:* State will revise intra-state formulas for PL fund allocations to MPOs.

*By March 2013:*

- Coordinate any FTA funding issues.
- Update Functional Highway Classifications.
- Develop a signed jurisdictional agreement. The MPO, State, and the public transportation operator shall cooperatively determine their mutual responsibilities. To the extent possible, a single agreement between all parties should be developed. The written agreement shall include responsibilities of all parties, specific provisions for cooperatively developing and sharing information related to the development of financial plans that support the metropolitan transportation plan and the TIP and development of the annual listing of obligated projects.
- New MPO must be designated by Governor.
- Following MPA boundary approval by the MPO and the Governor, the boundary descriptions shall be provided for informational purposes to the FHWA and the FTA.

*October 2013:* Start receiving annual PL funding from federal government for operating costs.

*By March 2014:*

- Develop simplified statement of work or a Unified Planning Work Program (UPWP), which is a document that explains the disposition of transportation planning funds in the MPO area. The document must contain a description of the planning work and resulting products, who will perform the work, time frames for completing the work, the cost of the work, and the source(s) of funds.

*By March 2016:*

- Develop and adopt Long Range Transportation Plan (LRTP): 20-30 year implementation plan that guides the region's vision over at least the next twenty years and must contain projects that are "cost feasible," meaning projects that can be built with funds that are reasonably expected to be obligated over the plan's timeframe.
- Draft and adopt a Transportation Improvement Program (TIP), a 4-5 year fiscally constrained prioritized project list and required for project to be eligible for funding under title 23 U.S.C. and title 49 U.S.C. Chapter 53.
- Develop and adopt public participation program.
- Develop Title VI Complaint Process.
- SCDOT must approve these plans for inclusion into their state plans and STIP. Plans are to be accepted by the state before funding can commence.

*October 2016:* Start receiving capital improvement guideshare funding on annual basis from federal government.



### **Background:**

With the 2010 census results, the Bureau of the Census designated the Town of Hilton Head Island, the Town of Bluffton, and portions of southern Beaufort County to be in an 'Urbanized Area' (UZA) because their combined population (68,998) is now over 50,000.

Creation of the boundaries and organization are governed by CFR 450.310 and 450.312:

- *"To carry out the metropolitan transportation planning process ..., a metropolitan planning organization shall be designated for each urbanized area with a population of more than 50,000 individuals (as determined by the Bureau of the Census)."*
- *"MPO designation shall be made by agreement between the governor and units of general purpose local government that together represent at least 75% of the affected population (including the largest incorporated city, based on population, as named by the Bureau of the Census)."*
- *"The boundaries of a metropolitan planning area shall be determined by agreement between the MPO and the Governor. At a minimum, the MPA boundaries shall encompass the entire existing urbanized area plus the contiguous area expected to become urbanized within a 20-year forecast period for the metropolitan transportation plan."*
- *"MPA boundaries may be established to coincide with the geography of regional economic development and growth forecasting areas."*

The State has given a deadline of March 2013 for the formation of our MPO. There are currently 10 MPOs in the State of South Carolina, ranging in population from 75,107-549,777. This new MPO would be the smallest at 68,998.

The municipalities of Beaufort, Port Royal, Hardeeville, Bluffton, Hilton Head Island and both Jasper and Beaufort County are in the process of approving a similar resolution prior to the August 30, 2012 state deadline.

### **Enclosures:**

- Map showing UZA boundaries, expanded area, & MPA boundaries
- Resolution

**A RESOLUTION OF THE TOWN COUNCIL OF THE TOWN OF BLUFFTON TO  
ADOPT GEOGRAPHICAL BOUNDARIES FOR A BEAUFORT COUNTY AND JASPER  
COUNTY METROPOLITAN PLANNING AREA AND TO CREATE A METROPOLITAN  
PLANNING ORGANIZATION**

**WHEREAS**, in March 2012, the Bureau of the Census defined a new Urbanized Area, based on the 2010 Census, when the combined population of the Town of Hilton Head Island, the Town of Bluffton, and parts of unincorporated Beaufort County reached over 50,000; and

**WHEREAS**, 23 CFR Section 450.310(a) requires that a Metropolitan Planning Organization (MPO) be designated for each Urbanized Area with a population of more than 50,000 individuals as determined by the Bureau of the Census; and

**WHEREAS**, the purpose of the MPO is to carry out a continuing, cooperative, and comprehensive multimodal transportation planning process, including the development of a metropolitan transportation plan and a transportation improvement program that encourages and promotes the safe and efficient development, management, and operation of surface transportation systems to serve the mobility needs of people and freight (including accessible pedestrian walkways and bicycle transportation facilities) and foster economic growth and development, while minimizing transportation-related fuel consumption and air pollution; and

**WHEREAS**, the MPO is a policy board of the organization created and designated to carry out the metropolitan transportation planning process and act as the forum for cooperative decision making by the principal elected officials of the units of general purpose local government; and

**WHEREAS**, this Policy Board shall be governed by its own bylaws and shall consist of the following voting members:

Town of Bluffton Mayor or designee	(1)
Town of Hilton Head Island Mayor or designee	(1)
Town of Port Royal Mayor or designee	(1)
City of Beaufort Mayor or designee	(1)
City of Hardeeville Mayor or designee	(1)
Beaufort County Council Chairman or designee	(1)
Jasper County Council Chairman or designee	(1)
Beaufort County Legislative Delegation Representative	(1)
Jasper County Legislative Delegation Representative	(1)
SC Transportation Commissioners within MPA	(3)

and the following ex-officio, non-voting members:

LRTA Executive Director or designee	(1)
SCDOT staff	(1)

**WHEREAS**, funds are provided by the Federal government through the State to accomplish required activities of the MPO; and

**WHEREAS**, the MPO designation shall be made by agreement between the Governor and units of general purpose local government that together represent at least 75 percent of the affected population; and

**WHEREAS**, the Metropolitan Planning Area (MPA) boundaries in which the metropolitan transportation planning process is carried out by the MPO shall encompass the entire existing Urbanized Area plus the contiguous area expected to become urbanized within a 20 year forecast period for the metropolitan transportation plan. This area will include all or some portion of the above-referenced governmental entities; and

**WHEREAS**, the MPA boundaries may be established to coincide with the geography of regional economic development and growth forecasting areas; and


**WHEREAS**, Lowcountry Council of Governments (LCOG) has traditionally coordinated transportation planning and federal transportation fund distribution in a multi-county area; and

**WHEREAS**, LCOG should retain the role of coordinating transportation planning and federal fund distribution to the designated multi-county area by becoming the fiscal agent and lead agency for coordination of the MPO, with assistance from the participating governments and public transit organization.

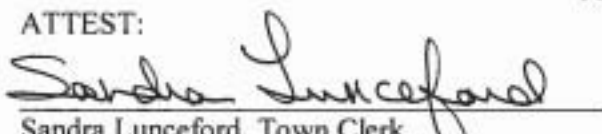
**NOW, THEREFORE BE IT, AND IT HEREBY IS RESOLVED BY THE TOWN COUNCIL FOR THE TOWN OF BLUFFTON, SOUTH CAROLINA, THAT** Council approves and agrees as follows:

1. The MPA boundaries as designated on the Attachment, subject to final "smoothing" of the area perimeter; and
2. The creation of the MPO, with Policy Board as constituted above; and
3. To be a member of and participate in the activities of the MPO; and
4. To contribute a portion of the local matching funds required to establish and operate the MPO, equal to its per capita share of the MPA's current population; and
5. The designation of Lowcountry Council of Governments as fiscal agent and entity leading and coordinating the MPO; and
6. The name of the MPO shall be the Lowcountry Area Transportation Study.

**MOVED, APPROVED, AND ADOPTED ON THIS 14<sup>th</sup> DAY OF AUGUST, 2012.**

  
\_\_\_\_\_  
Lisa Sulka, Mayor  
Town of Bluffton, South Carolina

ATTEST:

  
\_\_\_\_\_  
Sandra Lunceford, Town Clerk  
Town of Bluffton, South Carolina





**A RESOLUTION OF THE TOWN COUNCIL OF THE CITY OF BEAUFORT TO ADOPT  
GEOGRAPHICAL BOUNDARIES FOR A BEAUFORT COUNTY AND JASPER COUNTY  
METROPOLITAN PLANNING AREA AND TO CREATE A METROPOLITAN  
PLANNING ORGANIZATION**

**WHEREAS**, in March 2012, the Bureau of the Census defined a new Urbanized Area, based on the 2010 Census, when the combined population of the Town of Hilton Head Island, the Town of Bluffton, and parts of unincorporated Beaufort County reached over 50,000; and

**WHEREAS**, 23 CFR Section 450.310(a) requires that a Metropolitan Planning Organization (MPO) be designated for each Urbanized Area with a population of more than 50,000 individuals as determined by the Bureau of the Census; and

**WHEREAS**, the purpose of an MPO is to carry out a continuing, cooperative, and comprehensive multimodal transportation planning process, including the development of a metropolitan transportation plan and a transportation improvement program that encourages and promotes the safe and efficient development, management, and operation of surface transportation systems to serve the mobility needs of people and freight (including accessible pedestrian walkways and bicycle transportation facilities) and foster economic growth and development, while minimizing transportation-related fuel consumption and air pollution; and

**WHEREAS**, an MPO is a policy board of an organization created and designated to carry out the metropolitan transportation planning process and act as the forum for cooperative decision making by principal elected officials of general purpose local government; and

**WHEREAS**, this Policy Board will be governed by its own bylaws and will consist of the following voting members:

Town of Hilton Head Island Mayor	(1)
Town of Bluffton Mayor	(1)
Town of Port Royal Mayor	(1)
City of Beaufort Mayor	(1)
City of Hardeeville Mayor	(1)
Beaufort County Council Chairman	(1)
Jasper County Council Chairman	(1)
Beaufort County Legislative Delegation Representative	(1)
Jasper County Legislative Delegation Representative	(1)

and the following ex-officio, non-voting members:

LRTA Executive Director	(1)
SCDOT Commissioner	(1)

**WHEREAS**, funds are provided by the Federal government through the State to accomplish required activities of the MPO; and



**WHEREAS**, MPO designation shall be made by agreement between the Governor and units of general purpose local government that together represent at least 75 percent of the affected population; and

**WHEREAS**, Metropolitan Planning Area (MPA) boundaries in which the metropolitan transportation planning process is carried out by the MPO shall encompass the entire existing Urbanized Area plus the contiguous area expected to become urbanized within a 20 year forecast period for the metropolitan transportation plan. This area will include some portion of all of the above referenced governmental entities; and

**WHEREAS**, the MPA boundaries may be established to coincide with the geography of regional economic development and growth forecasting areas; and

**WHEREAS**, the Lowcountry Council of Governments (LCOG) has traditionally coordinated transportation planning and federal transportation fund distribution in a multi-county area; and

**WHEREAS**, the LCOG should retain the role of coordinating transportation planning and federal fund distribution to the designated multi-county area by becoming the lead agency for coordination of the MPO, with assistance from the participating governments and public transit organization.

**NOW, THEREFORE BE IT, AND IT HEREBY IS RESOLVED BY THE TOWN COUNCIL FOR THE CITY OF BEAUFORT, SOUTH CAROLINA, THAT** Council approves the metropolitan planning boundaries as designated; that the designated Policy Board act as the Metropolitan Planning Organization responsible for carrying out the transportation planning process; and that the Lowcountry Council of Governments shall serve as the entity leading and coordinating the Metropolitan Planning Organization.

**MOVED, APPROVED, AND ADOPTED ON THIS 24 DAY OF July 2012.**

  
BILLY KEYSERLING, MAYOR

ATTEST

  
IVETTE BURGESS, CITY CLERK

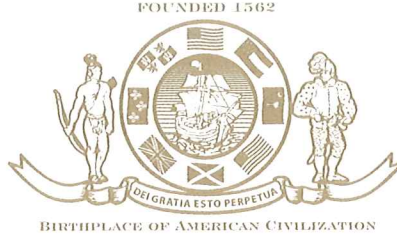
# Town of Port Royal, South Carolina

## Council

Samuel E. Murray  
Mayor

Vernon DeLoach  
Mayor Pro Tempore

Mary Beth Heyward  
Tom Klein  
Joe Lee



Van Willis  
Town Manager

James L. Cadien  
Chief of Police

Jeffrey S. Coppinger  
Daniel G. Lemieux  
Operations

Linda Bridges  
Planning

## RESOLUTION 5-2012

### A RESOLUTION OF THE TOWN COUNCIL OF THE TOWN OF PORT ROYAL TO ADOPT GEOGRAPHICAL BOUNDARIES FOR A BEAUFORT COUNTY AND JASPER COUNTY METROPOLITAN PLANNING AREA AND TO CREATE A METROPOLITAN PLANNING ORGANIZATION

**WHEREAS**, in March 2012, the Bureau of the Census defined a new Urbanized Area, based on the 2010 Census, when the combined population of the Town of Hilton Head Island, the Town of Bluffton, and parts of unincorporated Beaufort County reached over 50,000; and

**WHEREAS**, 23 CFR Section 450.310(a) requires that a Metropolitan Planning Organization (MPO) be designated for each Urbanized Area with a population of more than 50,000 individuals as determined by the Bureau of the Census; and

**WHEREAS**, the purpose of the MPO is to carry out a continuing, cooperative, and comprehensive multimodal transportation planning process, including the development of a metropolitan transportation plan and a transportation improvement program that encourages and promotes the safe and efficient development, management, and operation of surface transportation systems to serve the mobility needs of people and freight (including accessible pedestrian walkways and bicycle transportation facilities) and foster economic growth and development, while minimizing transportation-related fuel consumption and air pollution; and

**WHEREAS**, the MPO is a policy board of the organization created and designated to carry out the metropolitan transportation planning process and act as the forum for cooperative decision making by the principal elected officials of the units of general purpose local government; and

**WHEREAS**, this Policy Board shall be governed by its own bylaws and shall consist of the following voting members:

Town of Port Royal Mayor or designee	(1)
Town of Hilton Head Island Mayor or designee	(1)
Town of Bluffton Mayor or designee	(1)
City of Beaufort Mayor or designee	(1)
City of Hardeeville Mayor or designee	(1)
Beaufort County Council Chairman or designee	(1)

Jasper County Council Chairman or designee	(1)
Beaufort County Legislative Delegation Representative	(1)
Jasper County Legislative Delegation Representative	(1)
SC Transportation Commissioners within MPA	(3)

and the following ex-officio, non-voting members:

LRTA Executive Director or designee	(1)
SCDOT staff	(1)

**WHEREAS**, funds are provided by the Federal government through the State to accomplish required activities of the MPO; and

**WHEREAS**, the MPO designation shall be made by agreement between the Governor and units of general purpose local government that together represent at least 75 percent of the affected population; and

**WHEREAS**, the Metropolitan Planning Area (MPA) boundaries in which the metropolitan transportation planning process is carried out by the MPO shall encompass the entire existing Urbanized Area plus the contiguous area expected to become urbanized within a 20 year forecast period for the metropolitan transportation plan. This area will include all or some portion of the above-referenced governmental entities; and

**WHEREAS**, the MPA boundaries may be established to coincide with the geography of regional economic development and growth forecasting areas; and

**WHEREAS**, Lowcountry Council of Governments (LCOG) has traditionally coordinated transportation planning and federal transportation fund distribution in a multi-county area; and

**WHEREAS**, LCOG should retain the role of coordinating transportation planning and federal fund distribution to the designated multi-county area by becoming the fiscal agent and lead agency for coordination of the MPO, with assistance from the participating governments and public transit organization.

**NOW, THEREFORE BE IT, AND IT HEREBY IS RESOLVED BY THE TOWN COUNCIL FOR THE TOWN OF PORT ROYAL, SOUTH CAROLINA, THAT** Council approves and agrees as follows:

1. The MPA boundaries as designated on the Attachment, subject to final “smoothing” of the area perimeter; and
2. The creation of the MPO, with Policy Board as constituted above; and
3. To be a member of and participate in the activities of the MPO; and
4. To contribute a portion of the local matching funds required to establish and operate the MPO, equal to its per capita share of the MPA’s current population; and
5. The designation of Lowcountry Council of Governments as fiscal agent and entity leading and coordinating the MPO; and
6. The name of the MPO shall be the Lowcountry Area Transportation Study.



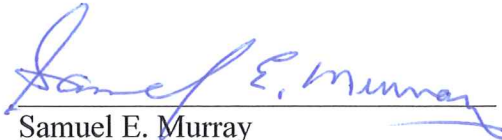
**MOVED, APPROVED, AND ADOPTED ON THIS 8th DAY OF AUGUST, 2012.**

REQUESTED:



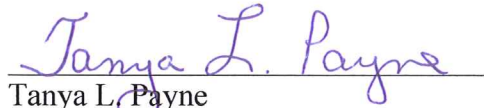
Milton E. Willis  
Town Manager Willis

APPROVED:



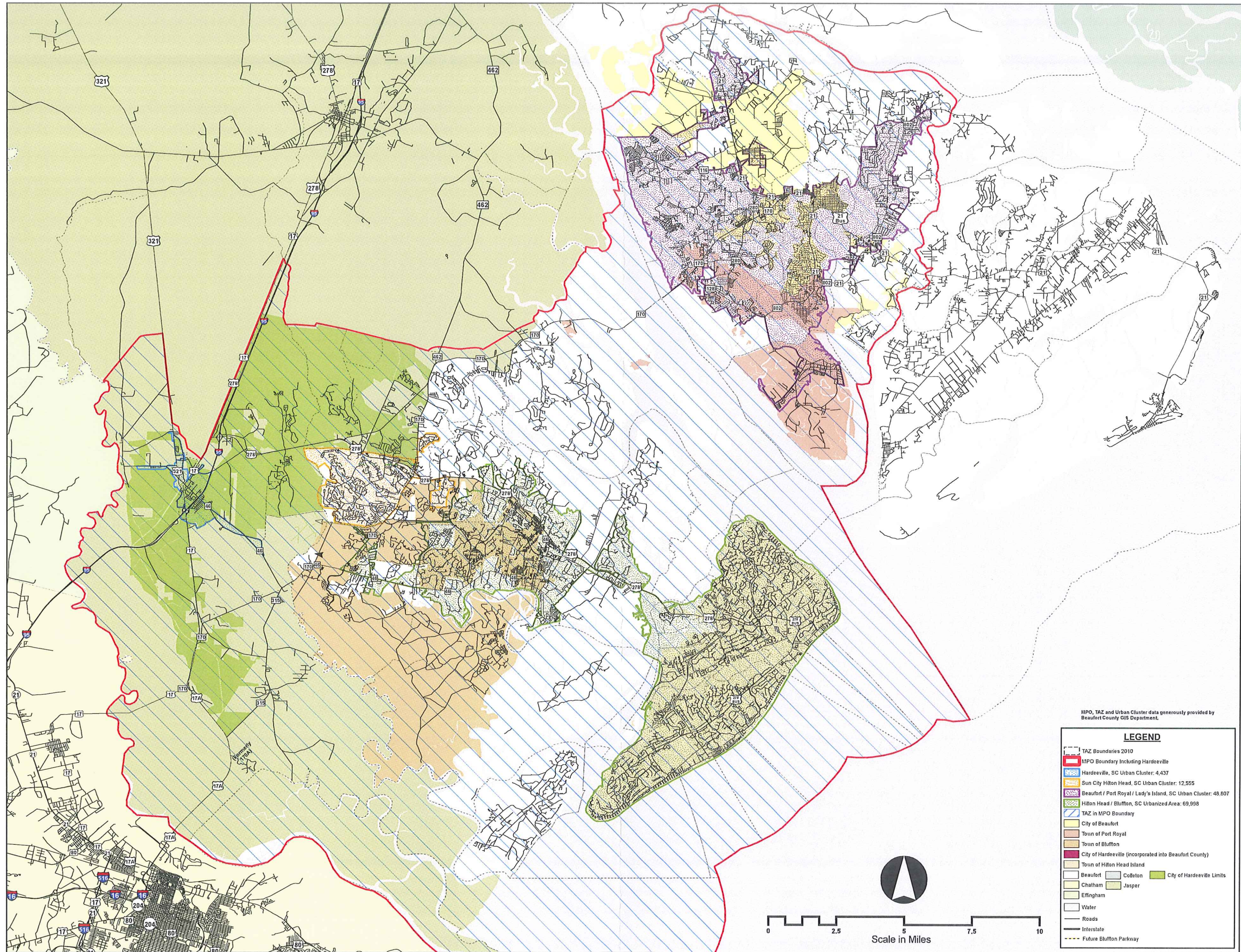
Samuel E. Murray  
Mayor

ATTEST:



Tanya L. Payne  
Municipal Clerk







**A RESOLUTION OF THE TOWN COUNCIL OF THE TOWN OF HILTON HEAD ISLAND TO ADOPT GEOGRAPHICAL BOUNDARIES FOR A BEAUFORT COUNTY AND JASPER COUNTY METROPOLITAN PLANNING AREA AND TO CREATE A METROPOLITAN PLANNING ORGANIZATION**

**WHEREAS**, in March 2012, the Bureau of the Census defined a new Urbanized Area, based on the 2010 Census, when the combined population of the Town of Hilton Head Island, the Town of Bluffton, and parts of unincorporated Beaufort County reached over 50,000; and

**WHEREAS**, 23 CFR Section 450.310(a) requires that a Metropolitan Planning Organization (MPO) be designated for each Urbanized Area with a population of more than 50,000 individuals as determined by the Bureau of the Census; and

**WHEREAS**, the purpose of the MPO is to carry out a continuing, cooperative, and comprehensive multimodal transportation planning process, including the development of a metropolitan transportation plan and a transportation improvement program that encourages and promotes the safe and efficient development, management, and operation of surface transportation systems to serve the mobility needs of people and freight (including accessible pedestrian walkways and bicycle transportation facilities) and foster economic growth and development, while minimizing transportation-related fuel consumption and air pollution; and

**WHEREAS**, the MPO is a policy board of the organization created and designated to carry out the metropolitan transportation planning process and act as the forum for cooperative decision making by the principal elected officials of the units of general purpose local government; and

**WHEREAS**, this Policy Board shall be governed by its own bylaws and shall consist of the following voting members:

Town of Hilton Head Island Mayor or designee	(1)
Town of Bluffton Mayor or designee	(1)
Town of Port Royal Mayor or designee	(1)
City of Beaufort Mayor or designee	(1)
City of Hatterasville Mayor or designee	(1)
Beaufort County Council Chairman or designee	(1)
Jasper County Council Chairman or designee	(1)
Beaufort County Legislative Delegation Representative	(1)
Jasper County Legislative Delegation Representative	(1)
SC Transportation Commissioner within MPA	(2)

and the following ex-officio, non-voting members:

LRTA Executive Director or designee	(1)
SCDOT staff	(1)

**WHEREAS**, funds are provided by the Federal government through the State to accomplish required activities of the MPO; and

**WHEREAS**, the MPO designation shall be made by agreement between the Governor and units of general purpose local government that together represent at least 75 percent of the affected population; and

**WHEREAS**, the Metropolitan Planning Area (MPA) boundaries in which the metropolitan transportation planning process is carried out by the MPO shall encompass the entire existing Urbanized Area plus the contiguous area expected to become urbanized within a 20 year forecast period for the metropolitan transportation plan. This area will include all or some portion of the above-referenced governmental entities; and

**WHEREAS**, the MPA boundaries may be established to coincide with the geography of regional economic development and growth forecasting areas; and

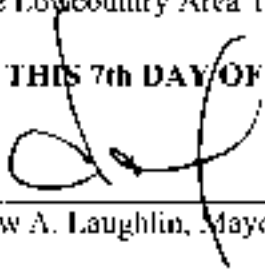
**WHEREAS**, Lowcountry Council of Governments (LCOG) has traditionally coordinated transportation planning and federal transportation fund distribution in a multi-county area; and

**WHEREAS**, LCOG should retain the role of coordinating transportation planning and federal fund distribution to the designated multi-county area by becoming the fiscal agent and lead agency for coordination of the MPO, with assistance from the participating governments and public transit organization.


**NOW, THEREFORE BE IT, AND IT HEREBY IS RESOLVED BY THE TOWN COUNCIL FOR THE TOWN OF HILTON HEAD ISLAND, SOUTH CAROLINA, THAT** Council approves and agrees as follows:

1. The MPA boundaries as designated on the Attachment, subject to final "smoothing" of the area perimeter; and
2. The creation of the MPO, with Policy Board as constituted above; and
3. To be a member of and participate in the activities of the MPO; and
4. To contribute a portion of the local matching funds required to establish and operate the MPO, equal to its per capita share of the MPA's current population; and
5. The designation of Lowcountry Council of Governments as fiscal agent and entity leading and coordinating the MPO; and
6. The name of the MPO shall be the Lowcountry Area Transportation Study.

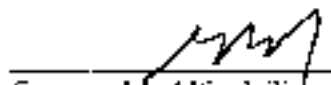
**MOVED, APPROVED, AND ADOPTED ON THIS 7th DAY OF August, 2012.**

  
\_\_\_\_\_  
Drew A. Laughlin, Mayor

ATTEST:

  
Victoria L. Pfannensticht, Acting Town Clerk

APPROVED AS TO FORM:

  
\_\_\_\_\_  
Gregory M. Alford, Town Attorney

Introduced by Council Member: KENNETH S. HEITZKE



# MEMORANDUM

**TO:** Town Council

**VIA:** Stephen G. Riley, ICMA-CM, Town Manager

**FROM:** Jill Foster, Deputy Director of Community Development

**RE:** Proposed Metropolitan Planning Area Boundaries and creation of a Metropolitan Planning Organization

**CC:** Charles Cousins, Scott Liggett, Darrin Shoemaker

**DATE:** July 20, 2012

---

**Recommendation:** That the Council adopt Metropolitan Planning Area (MPA) boundaries; create a Metropolitan Planning Organization (MPO) and policy board; and designate the Lowcountry Council of Governments (LCOG) as the lead agency to coordinate the MPO.

- *MPA Boundaries:* See attached Map.
- *Lead Agency:* It is recommended that the Lowcountry Council of Governments take the lead in operating the MPO. This agency currently oversees transportation planning on a regional basis and also receives federal funding for the rural part of the region. Staffing for this organization would be headed by LCOG with assistance from various other governmental staff as per a written agreement.
- *MPO Policy Board:* See attached Resolution. 23 USC 134 requires the following membership:
  - o *Local elected officials.*
  - o *Officials of public agencies that operate major modes of transportation in the metropolitan area.*
  - o *Appropriate state officials.*

**Summary:** A Metropolitan Planning Organization is a transportation policymaking organization made up of representatives from local government and transportation authorities. MPOs were created in order to ensure that existing and future expenditures for transportation projects and programs were based on a comprehensive, cooperative, and continuing (3-C) planning process. The role of the MPO includes: establishing a local forum for transportation decision making; evaluating transportation alternatives; developing and updating a long range transportation plan; developing a Transportation Improvement Program (TIP); and getting the public involved. Each MPO long range plan and TIP is encompassed into the State's plans and programs. Funds from the Federal Highway Administration are distributed to the State and then to MPOs for these transportation projects.

#### **MPA Boundary Justification:**

- Boundaries are outlined on the attached map and include the required Urbanized Area (UZA) of Hilton Head Island, Bluffton, and portions of southern Beaufort County.
- The area also includes those areas expected to urbanize within the next 20 years which coincide with the geography of regional economic development and growth forecasting areas (Hardeeville, portions of Jasper County, Beaufort, Port Royal, and portions of northern Beaufort County).
- Cooperative transportation planning would be provided comprehensively and regionally instead of by political jurisdictions.
- These boundaries allow for inclusion of entire US 278 corridor to I-95 within the planning boundary of the MPO as well as the proposed port area in Jasper County
- Significant portions of land along US 278 corridor have been permitted for residential & commercial growth in Hardeeville which would allow joint & cooperative planning of the US 278 corridor.
- These boundaries facilitate existing cooperative planning currently underway between Hardeeville and Beaufort County on Bluffton Parkway Phases 6 & 7.
- These boundaries support interest in continuous planning of the US 278 corridor that serves as primary access route for southern Beaufort County.
- SC 170 corridor is a potential high growth area and can be better served with comprehensive planning from both sides of Broad River.
- These boundaries limit duplicate staff efforts for planning in separate areas.

#### **Funding:**

There are various monies available for start-up funds, operating funds, and project funds, based on the population of the Urbanized Area:

- 'Start-up' money is available from the state for operating costs. We would apply for this start-up money through the SCDOT Secretary this summer.
- Annual operating money is available from the Federal Government (called PL funds). We would receive these on a federal fiscal year cycle. Conversations with the two smallest existing MPOs indicate they get \$155,000-155,000 per year in PL funds for operating expenses, and our MPO would be required to have a 20% match to these funds. We will be notified of our funding amount before March 2013.
- Other federal monies are given to MPOs for the actual transportation projects. We anticipate an estimated \$2.4 million might be given to our MPO, based on data from the other two small MPOs in the state. We will be notified of our funding amount before March 2013. Only enhancement-type funds require a 20% local match.
- An agreement between the participating jurisdictions would determine the percentage of matching funds from each governmental jurisdiction for operating and capital costs.

#### **Schedule:**

*By August 30, 2012:*

- Boundaries for the MPA must be submitted to the Governor (via SCDOT) for approval. Boundaries shall be determined by agreement between the MPO and the Governor.
- Apply for start up money from state through State Planning and Research (SPR), National Highway System (NHS), Surface Transportation Program (STP) and Minimum Guarantee (MG) funds.

*By October 2012:* State will revise intra-state formulas for PL fund allocations to MPOs.

*By March 2013:*

- Coordinate any FTA funding issues.
- Update Functional Highway Classifications.
- Develop a signed jurisdictional agreement. The MPO, State, and the public transportation operator shall cooperatively determine their mutual responsibilities. To the extent possible, a single agreement between all parties should be developed. The written agreement shall include responsibilities of all parties, specific provisions for cooperatively developing and sharing information related to the development of financial plans that support the metropolitan transportation plan and the TIP and development of the annual listing of obligated projects.
- New MPO must be designated by Governor.
- Following MPA boundary approval by the MPO and the Governor, the boundary descriptions shall be provided for informational purposes to the FHWA and the FTA.

*October 2013:* Start receiving annual PL funding from federal government for operating costs.

*By March 2014:*

- Develop simplified statement of work or a Unified Planning Work Program (UPWP), which is a document that explains the disposition of transportation planning funds in the MPO area. The document must contain a description of the planning work and resulting products, who will perform the work, time frames for completing the work, the cost of the work, and the source(s) of funds.

*By March 2016:*

- Develop and adopt Long Range Transportation Plan (LRTP): 20-30 year implementation plan that guides the region's vision over at least the next twenty years and must contain projects that are "cost feasible," meaning projects that can be built with funds that are reasonably expected to be obligated over the plan's timeframe.
- Draft and adopt a Transportation Improvement Program (TIP), a 4-5 year fiscally constrained prioritized project list and required for project to be eligible for funding under title 23 U.S.C. and title 49 U.S.C. Chapter 53.
- Develop and adopt public participation program.
- Develop Title VI Complaint Process.
- SCDOT must approve these plans for inclusion into their state plans and STIP. Plans are to be accepted by the state before funding can commence.

*October 2016:* Start receiving capital improvement guideshare funding on annual basis from federal government.



## **Background:**

With the 2010 census results, the Bureau of the Census designated the Town of Hilton Head Island, the Town of Bluffton, and portions of southern Beaufort County to be in an 'Urbanized Area' (UZA) because their combined population (68,998) is now over 50,000.

Creation of the boundaries and organization are governed by CFR 450.310 and 450.312:

- *"To carry out the metropolitan transportation planning process ..., a metropolitan planning organization shall be designated for each urbanized area with a population of more than 50,000 individuals (as determined by the Bureau of the Census)."*
- *"MPO designation shall be made by agreement between the governor and units of general purpose local government that together represent at least 75% of the affected population (including the largest incorporated city, based on population, as named by the Bureau of the Census)."*
- *"The boundaries of a metropolitan planning area shall be determined by agreement between the MPO and the Governor. At a minimum, the MPA boundaries shall encompass the entire existing urbanized area plus the contiguous area expected to become urbanized within a 20-year forecast period for the metropolitan transportation plan."*
- *"MPA boundaries may be established to coincide with the geography of regional economic development and growth forecasting areas."*

The State has given a deadline of March 2013 for the formation of our MPO. There are currently 10 MPOs in the State of South Carolina, ranging in population from 75,107-549,777. This new MPO would be the smallest at 68,998.

The municipalities of Beaufort, Port Royal, Hardeeville, Bluffton, Hilton Head Island and both Jasper and Beaufort County are in the process of approving a similar resolution prior to the August 30, 2012 state deadline.

## **Enclosures:**

- Map showing UZA boundaries, expanded area, & MPA boundaries
- Resolution

**A RESOLUTION OF THE TOWN COUNCIL OF THE TOWN OF BLUFFTON TO  
ADOPT GEOGRAPHICAL BOUNDARIES FOR A BEAUFORT COUNTY AND JASPER  
COUNTY METROPOLITAN PLANNING AREA AND TO CREATE A METROPOLITAN  
PLANNING ORGANIZATION**

**WHEREAS**, in March 2012, the Bureau of the Census defined a new Urbanized Area, based on the 2010 Census, when the combined population of the Town of Hilton Head Island, the Town of Bluffton, and parts of unincorporated Beaufort County reached over 50,000; and

**WHEREAS**, 23 CFR Section 450.310(a) requires that a Metropolitan Planning Organization (MPO) be designated for each Urbanized Area with a population of more than 50,000 individuals as determined by the Bureau of the Census; and

**WHEREAS**, the purpose of the MPO is to carry out a continuing, cooperative, and comprehensive multimodal transportation planning process, including the development of a metropolitan transportation plan and a transportation improvement program that encourages and promotes the safe and efficient development, management, and operation of surface transportation systems to serve the mobility needs of people and freight (including accessible pedestrian walkways and bicycle transportation facilities) and foster economic growth and development, while minimizing transportation-related fuel consumption and air pollution; and

**WHEREAS**, the MPO is a policy board of the organization created and designated to carry out the metropolitan transportation planning process and act as the forum for cooperative decision making by the principal elected officials of the units of general purpose local government; and

**WHEREAS**, this Policy Board shall be governed by its own bylaws and shall consist of the following voting members:

Town of Bluffton Mayor or designee	(1)
Town of Hilton Head Island Mayor or designee	(1)
Town of Port Royal Mayor or designee	(1)
City of Beaufort Mayor or designee	(1)
City of Hardeeville Mayor or designee	(1)
Beaufort County Council Chairman or designee	(1)
Jasper County Council Chairman or designee	(1)
Beaufort County Legislative Delegation Representative	(1)
Jasper County Legislative Delegation Representative	(1)
SC Transportation Commissioners within MPA	(3)

and the following ex-officio, non-voting members:

LRTA Executive Director or designee	(1)
SCDOT staff	(1)

**WHEREAS**, funds are provided by the Federal government through the State to accomplish required activities of the MPO; and

**WHEREAS**, the MPO designation shall be made by agreement between the Governor and units of general purpose local government that together represent at least 75 percent of the affected population; and

**WHEREAS**, the Metropolitan Planning Area (MPA) boundaries in which the metropolitan transportation planning process is carried out by the MPO shall encompass the entire existing Urbanized Area plus the contiguous area expected to become urbanized within a 20 year forecast period for the metropolitan transportation plan. This area will include all or some portion of the above-referenced governmental entities; and

**WHEREAS**, the MPA boundaries may be established to coincide with the geography of regional economic development and growth forecasting areas; and

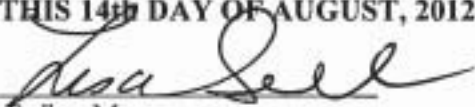
**WHEREAS**, Lowcountry Council of Governments (LCOG) has traditionally coordinated transportation planning and federal transportation fund distribution in a multi-county area; and

**WHEREAS**, LCOG should retain the role of coordinating transportation planning and federal fund distribution to the designated multi-county area by becoming the fiscal agent and lead agency for coordination of the MPO, with assistance from the participating governments and public transit organization.

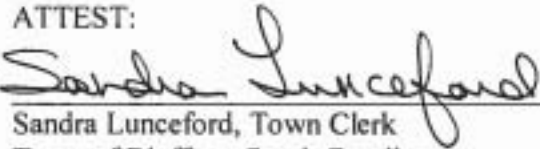
**NOW, THEREFORE BE IT, AND IT HEREBY IS RESOLVED BY THE TOWN COUNCIL FOR THE TOWN OF BLUFFTON, SOUTH CAROLINA, THAT** Council approves and agrees as follows:

1. The MPA boundaries as designated on the Attachment, subject to final "smoothing" of the area perimeter; and
2. The creation of the MPO, with Policy Board as constituted above; and
3. To be a member of and participate in the activities of the MPO; and
4. To contribute a portion of the local matching funds required to establish and operate the MPO, equal to its per capita share of the MPA's current population; and
5. The designation of Lowcountry Council of Governments as fiscal agent and entity leading and coordinating the MPO; and
6. The name of the MPO shall be the Lowcountry Area Transportation Study.

**MOVED, APPROVED, AND ADOPTED ON THIS 14<sup>th</sup> DAY OF AUGUST, 2012.**

  
\_\_\_\_\_  
Lisa Sulka, Mayor  
Town of Bluffton, South Carolina

ATTEST:

  
\_\_\_\_\_  
Sandra Lunceford, Town Clerk  
Town of Bluffton, South Carolina





**A RESOLUTION OF THE TOWN COUNCIL OF THE CITY OF BEAUFORT TO ADOPT  
GEOGRAPHICAL BOUNDARIES FOR A BEAUFORT COUNTY AND JASPER COUNTY  
METROPOLITAN PLANNING AREA AND TO CREATE A METROPOLITAN  
PLANNING ORGANIZATION**

**WHEREAS**, in March 2012, the Bureau of the Census defined a new Urbanized Area, based on the 2010 Census, when the combined population of the Town of Hilton Head Island, the Town of Bluffton, and parts of unincorporated Beaufort County reached over 50,000; and

**WHEREAS**, 23 CFR Section 450.310(a) requires that a Metropolitan Planning Organization (MPO) be designated for each Urbanized Area with a population of more than 50,000 individuals as determined by the Bureau of the Census; and

**WHEREAS**, the purpose of an MPO is to carry out a continuing, cooperative, and comprehensive multimodal transportation planning process, including the development of a metropolitan transportation plan and a transportation improvement program that encourages and promotes the safe and efficient development, management, and operation of surface transportation systems to serve the mobility needs of people and freight (including accessible pedestrian walkways and bicycle transportation facilities) and foster economic growth and development, while minimizing transportation-related fuel consumption and air pollution; and

**WHEREAS**, an MPO is a policy board of an organization created and designated to carry out the metropolitan transportation planning process and act as the forum for cooperative decision making by principal elected officials of general purpose local government; and

**WHEREAS**, this Policy Board will be governed by its own bylaws and will consist of the following voting members:

Town of Hilton Head Island Mayor	(1)
Town of Bluffton Mayor	(1)
Town of Port Royal Mayor	(1)
City of Beaufort Mayor	(1)
City of Hardeeville Mayor	(1)
Beaufort County Council Chairman	(1)
Jasper County Council Chairman	(1)
Beaufort County Legislative Delegation Representative	(1)
Jasper County Legislative Delegation Representative	(1)

and the following ex-officio, non-voting members:

LRTA Executive Director	(1)
SCDOT Commissioner	(1)

**WHEREAS**, funds are provided by the Federal government through the State to accomplish required activities of the MPO; and



**WHEREAS**, MPO designation shall be made by agreement between the Governor and units of general purpose local government that together represent at least 75 percent of the affected population; and

**WHEREAS**, Metropolitan Planning Area (MPA) boundaries in which the metropolitan transportation planning process is carried out by the MPO shall encompass the entire existing Urbanized Area plus the contiguous area expected to become urbanized within a 20 year forecast period for the metropolitan transportation plan. This area will include some portion of all of the above referenced governmental entities; and

**WHEREAS**, the MPA boundaries may be established to coincide with the geography of regional economic development and growth forecasting areas; and

**WHEREAS**, the Lowcountry Council of Governments (LCOG) has traditionally coordinated transportation planning and federal transportation fund distribution in a multi-county area; and

**WHEREAS**, the LCOG should retain the role of coordinating transportation planning and federal fund distribution to the designated multi-county area by becoming the lead agency for coordination of the MPO, with assistance from the participating governments and public transit organization.

**NOW, THEREFORE BE IT, AND IT HEREBY IS RESOLVED BY THE TOWN COUNCIL FOR THE CITY OF BEAUFORT, SOUTH CAROLINA, THAT** Council approves the metropolitan planning boundaries as designated; that the designated Policy Board act as the Metropolitan Planning Organization responsible for carrying out the transportation planning process; and that the Lowcountry Council of Governments shall serve as the entity leading and coordinating the Metropolitan Planning Organization.

**MOVED, APPROVED, AND ADOPTED ON THIS 24 DAY OF July 2012.**

  
BILLY KEYSERLING, MAYOR

ATTEST

  
IVETTE BURGESS, CITY CLERK

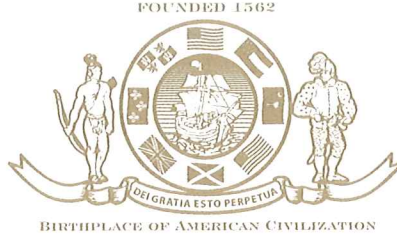
# Town of Port Royal, South Carolina

## Council

Samuel E. Murray  
Mayor

Vernon DeLoach  
Mayor Pro Tempore

Mary Beth Heyward  
Tom Klein  
Joe Lee



Van Willis  
Town Manager

James L. Cadien  
Chief of Police

Jeffrey S. Coppinger  
Daniel G. Lemieux  
Operations

Linda Bridges  
Planning

## RESOLUTION 5-2012

### A RESOLUTION OF THE TOWN COUNCIL OF THE TOWN OF PORT ROYAL TO ADOPT GEOGRAPHICAL BOUNDARIES FOR A BEAUFORT COUNTY AND JASPER COUNTY METROPOLITAN PLANNING AREA AND TO CREATE A METROPOLITAN PLANNING ORGANIZATION

**WHEREAS**, in March 2012, the Bureau of the Census defined a new Urbanized Area, based on the 2010 Census, when the combined population of the Town of Hilton Head Island, the Town of Bluffton, and parts of unincorporated Beaufort County reached over 50,000; and

**WHEREAS**, 23 CFR Section 450.310(a) requires that a Metropolitan Planning Organization (MPO) be designated for each Urbanized Area with a population of more than 50,000 individuals as determined by the Bureau of the Census; and

**WHEREAS**, the purpose of the MPO is to carry out a continuing, cooperative, and comprehensive multimodal transportation planning process, including the development of a metropolitan transportation plan and a transportation improvement program that encourages and promotes the safe and efficient development, management, and operation of surface transportation systems to serve the mobility needs of people and freight (including accessible pedestrian walkways and bicycle transportation facilities) and foster economic growth and development, while minimizing transportation-related fuel consumption and air pollution; and

**WHEREAS**, the MPO is a policy board of the organization created and designated to carry out the metropolitan transportation planning process and act as the forum for cooperative decision making by the principal elected officials of the units of general purpose local government; and

**WHEREAS**, this Policy Board shall be governed by its own bylaws and shall consist of the following voting members:

Town of Port Royal Mayor or designee	(1)
Town of Hilton Head Island Mayor or designee	(1)
Town of Bluffton Mayor or designee	(1)
City of Beaufort Mayor or designee	(1)
City of Hardeeville Mayor or designee	(1)
Beaufort County Council Chairman or designee	(1)

Jasper County Council Chairman or designee	(1)
Beaufort County Legislative Delegation Representative	(1)
Jasper County Legislative Delegation Representative	(1)
SC Transportation Commissioners within MPA	(3)

and the following ex-officio, non-voting members:

LRTA Executive Director or designee	(1)
SCDOT staff	(1)

**WHEREAS**, funds are provided by the Federal government through the State to accomplish required activities of the MPO; and

**WHEREAS**, the MPO designation shall be made by agreement between the Governor and units of general purpose local government that together represent at least 75 percent of the affected population; and

**WHEREAS**, the Metropolitan Planning Area (MPA) boundaries in which the metropolitan transportation planning process is carried out by the MPO shall encompass the entire existing Urbanized Area plus the contiguous area expected to become urbanized within a 20 year forecast period for the metropolitan transportation plan. This area will include all or some portion of the above-referenced governmental entities; and

**WHEREAS**, the MPA boundaries may be established to coincide with the geography of regional economic development and growth forecasting areas; and

**WHEREAS**, Lowcountry Council of Governments (LCOG) has traditionally coordinated transportation planning and federal transportation fund distribution in a multi-county area; and

**WHEREAS**, LCOG should retain the role of coordinating transportation planning and federal fund distribution to the designated multi-county area by becoming the fiscal agent and lead agency for coordination of the MPO, with assistance from the participating governments and public transit organization.

**NOW, THEREFORE BE IT, AND IT HEREBY IS RESOLVED BY THE TOWN COUNCIL FOR THE TOWN OF PORT ROYAL, SOUTH CAROLINA, THAT** Council approves and agrees as follows:

1. The MPA boundaries as designated on the Attachment, subject to final “smoothing” of the area perimeter; and
2. The creation of the MPO, with Policy Board as constituted above; and
3. To be a member of and participate in the activities of the MPO; and
4. To contribute a portion of the local matching funds required to establish and operate the MPO, equal to its per capita share of the MPA’s current population; and
5. The designation of Lowcountry Council of Governments as fiscal agent and entity leading and coordinating the MPO; and
6. The name of the MPO shall be the Lowcountry Area Transportation Study.



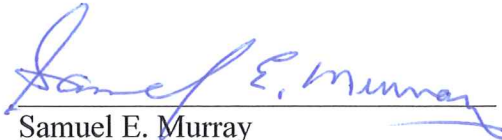
**MOVED, APPROVED, AND ADOPTED ON THIS 8th DAY OF AUGUST, 2012.**

REQUESTED:



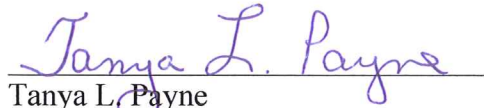
Milton E. Willis  
Town Manager Willis

APPROVED:



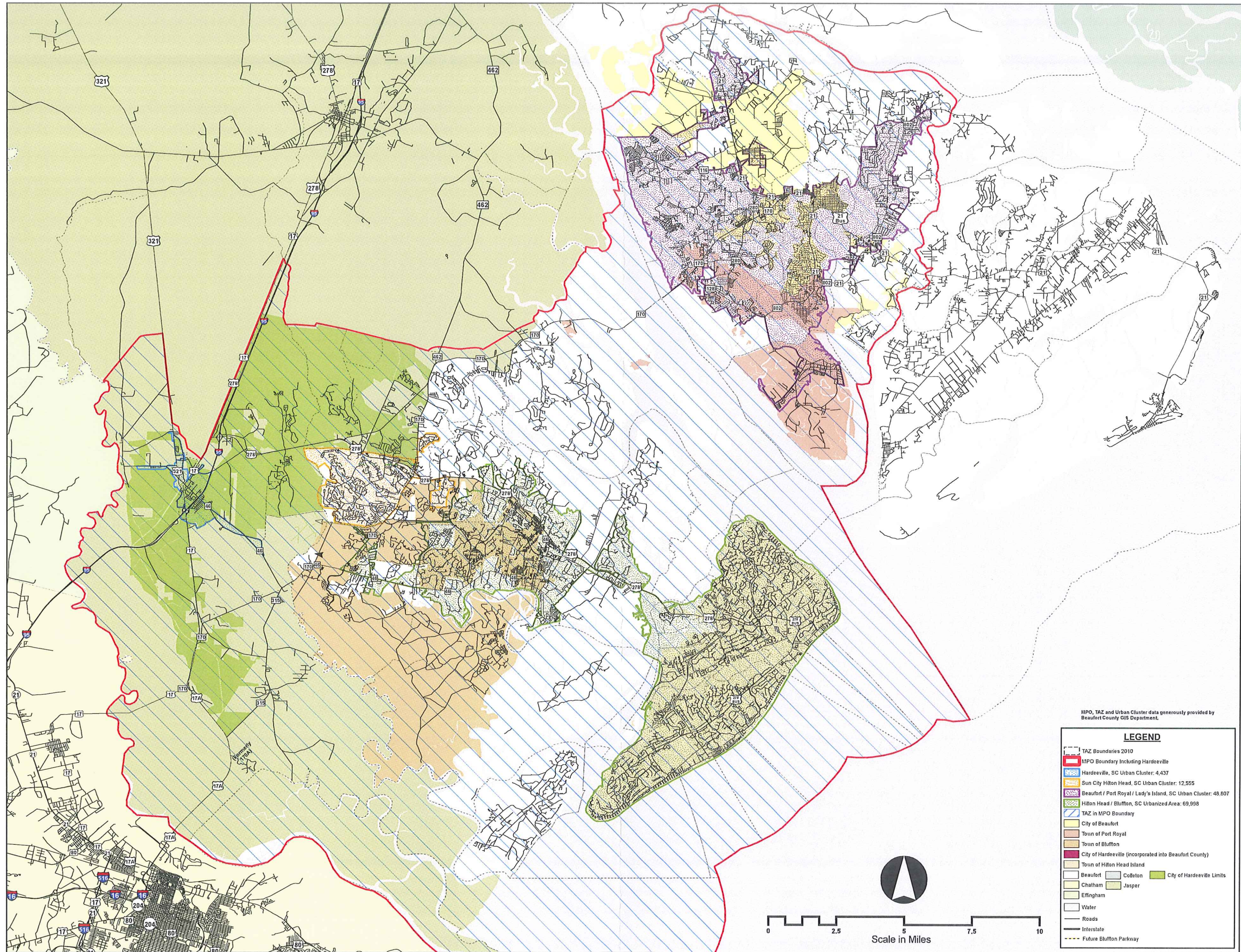
Samuel E. Murray  
Mayor

ATTEST:



Tanya L. Payne  
Municipal Clerk





MPO, TAZ and Urban Cluster data generously provided by Beaufort County GIS Department.

**LEGEND**

- TAZ Boundaries 2010
- MPO Boundary Including Hardeeville
- Hardeeville, SC Urban Cluster: 4,437
- Sun City Hilton Head, SC Urban Cluster: 12,555
- Beaufort / Port Royal / Lady's Island, SC Urban Cluster: 48,807
- Hilton Head / Bluffton, SC Urbanized Area: 69,998
- TAZ in MPO Boundary
- City of Beaufort
- Town of Port Royal
- Town of Bluffton
- City of Hardeeville (incorporated into Beaufort County)
- Town of Hilton Head Island
- Beaufort
- Colleton
- Chatham
- Effingham
- City of Hardeeville Limits
- Jasper
- Water
- Roads
- Interstate
- Future Bluffton Parkway

