

COUNTY COUNCIL OF BEAUFORT COUNTY
ADMINISTRATION BUILDING
BEAUFORT COUNTY GOVERNMENT ROBERT SMALLS COMPLEX
100 RIBAUT ROAD

POST OFFICE DRAWER 1228
BEAUFORT, SOUTH CAROLINA 29901-1228

TELEPHONE: (843) 255-2000

FAX: (843) 255-9401

www.bcgov.net

D. PAUL SOMMERVILLE
CHAIRMAN

GERALD W. STEWART
VICE CHAIRMAN

COUNCIL MEMBERS

CYNTHIA M. BENSCH
RICK CAPORALE
GERALD DAWSON
BRIAN E. FLEWELLING
STEVEN G. FOBES
ALICE G. HOWARD
WILLIAM L. MCBRIDE
STUART H. RODMAN
ROBERTS "TABOR" VAUX

GARY T. KUBIC
COUNTY ADMINISTRATOR

JOSHUA A. GRUBER
DEPUTY COUNTY ADMINISTRATOR
SPECIAL COUNSEL

SUZANNE M. RAINEY
CLERK TO COUNCIL

AGENDA
COMMUNITY SERVICES COMMITTEE

Monday, April 27, 2015

2:30 p.m.

Executive Conference Room

Administration Building

Beaufort County Government Robert Smalls Complex

100 Ribaut Road, Beaufort

WORK SESSION

Committee Members:

William McBride, Chairman
Gerald Dawson, Vice Chairman
Rick Caporale
Steve Fobes
Alice Howard
Roberts "Tabor" Vaux

Staff Support:

Morris Campbell, Community Services Director
Monica Spells, Assistant County Administrator
Civic Engagement and Outreach

1. CALL TO ORDER – 2:30 P.M.
2. UPDATE / APPLICATION WITHDRAWN FOR A COMMUNITY DEVELOPMENT BLOCK GRANT FOR INSTALLATION OF WATER LINES IN THE SEABROOK COMMUNITY ([backup](#))
3. PRESENTATION / PARKS AND LEISURE SERVICES BOARD VISION ([backup](#))
4. ADJOURNMENT



COUNTY COUNCIL OF BEAUFORT COUNTY
OFFICE OF THE COUNTY ADMINISTRATOR
ADMINISTRATION BUILDING
BEAUFORT COUNTY GOVERNMENT ROBERT SMALLS COMPLEX
100 RIBAUT ROAD
POST OFFICE DRAWER 1228
BEAUFORT, SOUTH CAROLINA 29901-1228
TELEPHONE: (843) 255-2026
FAX: (843) 255-9403
www.bcgov.net

GARY T. KUBIC
COUNTY ADMINISTRATOR

CHERYL HARRIS
EXECUTIVE ASSISTANT

JOSHUA A. GRUBER
DEPUTY COUNTY ADMINISTRATOR
SPECIAL COUNSEL

April 8, 2015

Ms. Lisa Kalsbeck, Director
Division of Grant Administration
South Carolina Department of Commerce
1201 Main Street, Suite 1600
Columbia, South Carolina 29201

RE: Beaufort County CI Application Request # 15-42/ Seabrook Water Expansion

Dear Ms. Kalsbeck:

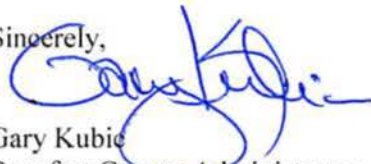
This is to inform you that due to what appears to be only nominal interest from residents of the community targeted for the installation of water lines, Beaufort County respectfully withdraws its application request to apply for a Community Development Block Grant. This decision comes after discussion with County staff, officials with Beaufort-Jasper Water Sewer Authority (BJWSA), and Lowcountry Council of Governments (BJWSA).

Our effort to secure commitments from potential users of a water system was not successful. Most of the residents did not respond to the survey and those that did, have no desire to commit to a public water system at this time. The project also would have included the tenants of two mobile home parks (40% of the project area). The owners of the parks are interested in making the water available for their tenants. However, they, too, have not been successful in obtaining the completed surveys from their tenants; thus, at this time we do not feel we have adequate data to submit an application.

We will continue to work with residents in this community, to hopefully, help make applying for a future CDBG for the area more viable. Please know that we appreciate the work that has been done in Beaufort County using the CDBG grant program and look forward to working with you in the forward.

If there are any questions regarding this matter, please contact Michelle Knight at Lowcountry Council of Governments. Thank you.

Sincerely,



Gary Kubie
Beaufort County Administrator

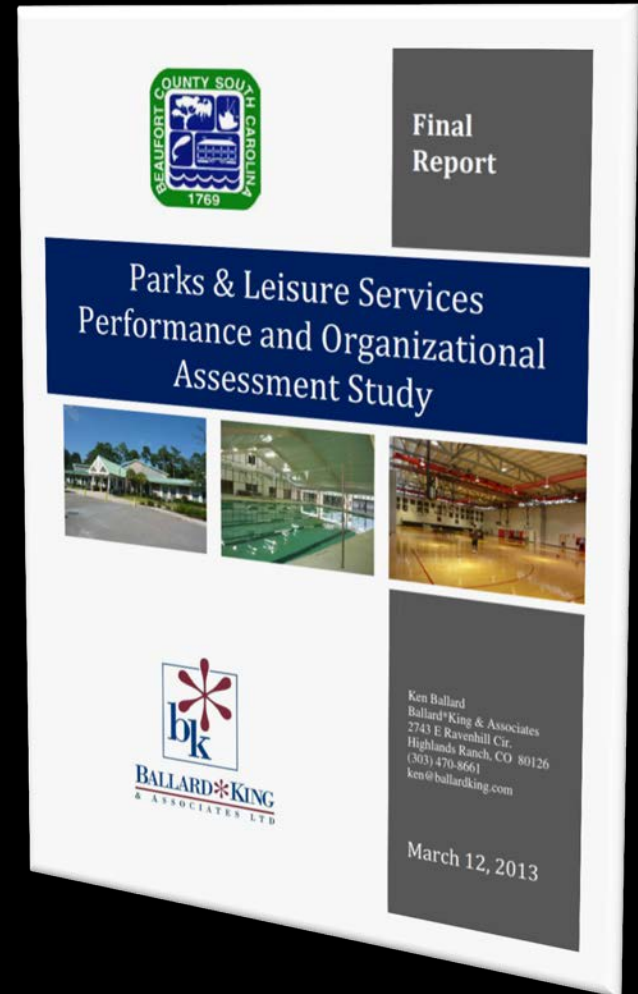
cc: Michelle Knight, Lowcountry COG
Stefanie Smith, SCDOC/DGA
Pamela Flasch, BJWSA
Monica Spells, Assistant County Administrator, Civic Engagement & Outreach
Gerald Dawson, County Council

*“It’s time for a change
with Beaufort PALS”*

*Actual title of a recently active
Facebook page with nearly 300
subscribers*

Ballard* King Assessment Study

- Purpose: Critically assess PALS and provide recommendations
- Information gathered from two site visits to county in October and December 2012
- Final report dated March 12, 2013



“Any recommendations being made are with the knowledge that it may be difficult to implement all of the findings in this study with the current operational funding level for the Department, the staffing level of PALS, and the necessary time requirements for completion.”

- **Ballard-King Organizational Assessment Study**
March 12, 2013

“Beaufort County will need to determine their long term commitment to parks and recreation as part of the services provided by the County. It should be recognized that most counties in the United States have a rather limited role in providing these services with much more of the overall responsibility falling on the individual towns and cities. Counties usually focus on larger regional parks, open space and greenways, and county wide indoor facilities (arenas, event centers and sports complexes). Counties rarely are major program and service providers.”

“Beaufort County will need to determine their long term commitment to parks and recreation as part of the services provided by the County. It should be recognized that most counties in the United States have a rather limited role in providing these services with much more of the overall responsibility falling on the individual towns and cities. Counties usually focus on larger regional parks, open space and greenways, and county wide indoor facilities (arenas, event centers and sports complexes). Counties rarely are major program and service providers.”

“Beaufort County will need to determine their long term commitment to parks and recreation as part of the services provided by the County. It should be recognized that most counties in the United States have a rather limited role in providing these services with much more of the overall responsibility falling on the individual towns and cities.

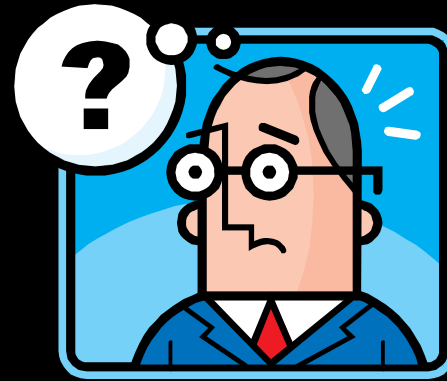
Counties usually focus on larger regional parks, open space and greenways, and county wide indoor facilities (arenas, event centers and sports complexes). Counties rarely are major program and service providers.”

“Beaufort County will need to determine their long term commitment to parks and recreation as part of the services provided by the County. It should be recognized that most counties in the United States have a rather limited role in providing these services with much more of the overall responsibility falling on the individual towns and cities. Counties usually focus on larger regional parks, open space and greenways, and county wide indoor facilities (arenas, event centers and sports complexes). Counties rarely are major program and service providers.”

“Once the future level of commitment to parks and recreation amenities and services has been determined, the level of service that is going to be provided will need to be established and a commensurate allocation of the necessary resources (funding, staff, and materials) will be required.”

In concrete terms...

- 1) Determine level of commitment to recreational activities



In concrete terms...

- 1) Determine level of commitment to recreational activities
 - What services will/should county provide?
 - How much public subsidy is expected?
- 2) Strategically plan to make it happen
 - Structure
 - Resources
 - Relationships

Services Currently Provided, by Locale

| Locale | Athletics | Aquatics | After School | Seniors | Summer Camp |
|-------------|-----------|----------|--------------|---------|-------------|
| Beaufort | Yes | Yes | Yes | Yes | Yes |
| Bluffton | * Yes | Yes | Yes | No | Yes |
| Hilton Head | * No | No | No | No | No |

* Partial

PALS Advisory Board Vision

1. **Transition enrichment programs** to more capable delivery agents
2. **Implement new service delivery model** for recreation south of the Broad River
3. **Refocus** centralized recreational activities in northern Beaufort County

PALS Advisory Board Vision

- **Transition enrichment programs** to more capable delivery agents
 - PALS does not have the expertise nor the resources to run quality programs
 - Shifting programs (with subsidy) to struggling non-profits with expertise benefits all
 - Transition must not result in service gaps
 - ***Already in progress!***

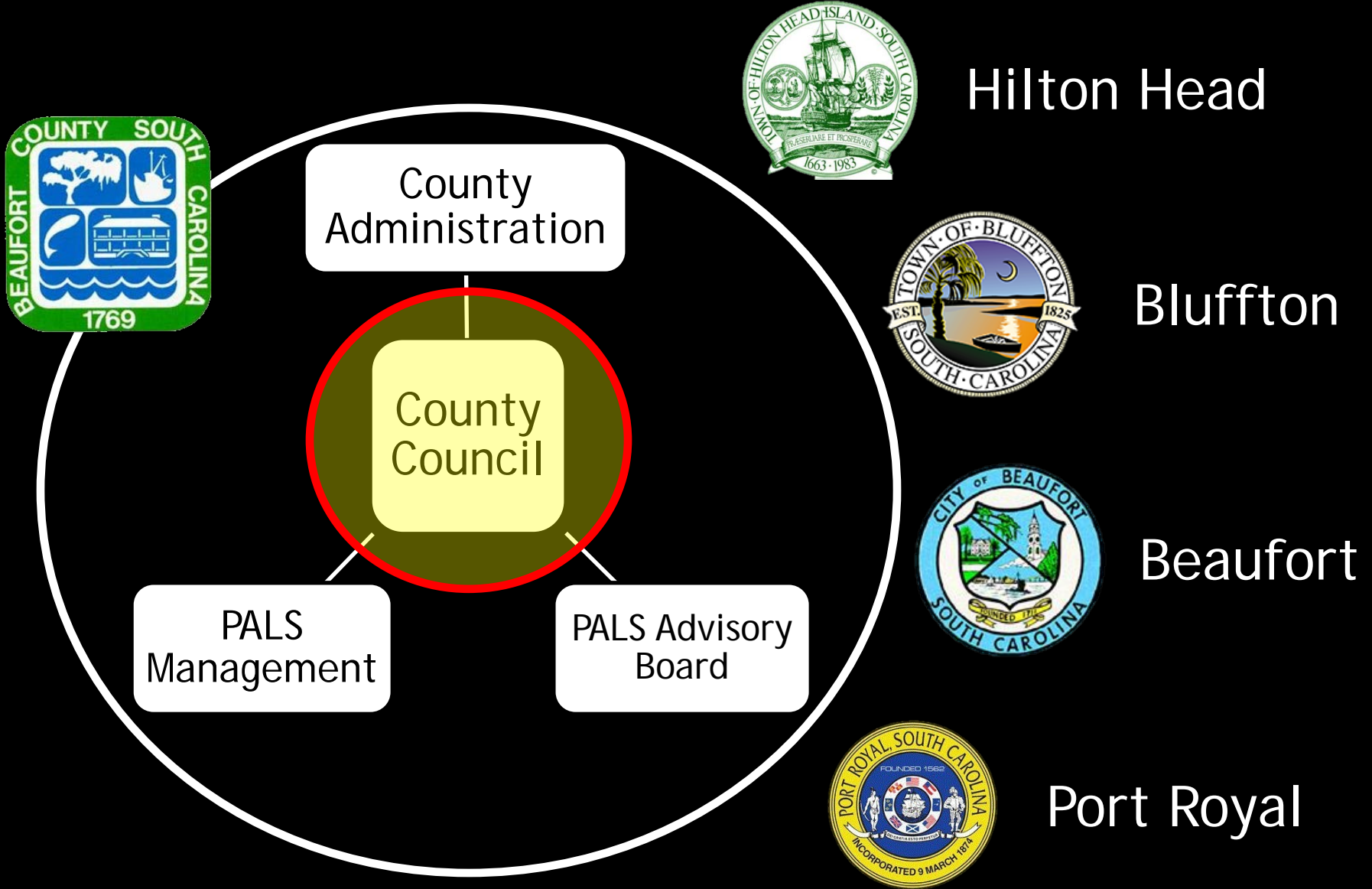
PALS Advisory Board Vision

- **Implement new service delivery model** for recreation south of the Broad River
 - County demographics are too wide-ranging to continue service delivery with a county-centric model
 - Transfer of recreational property and responsibility to Town of Hilton Head Island
 - Transfer of recreational property and responsibility to Town of Bluffton for the greater Bluffton area
 - Possible interim step to Bluffton Plan...parcel out resources for Bluffton recreation into a separate department focusing on athletics only

PALS Advisory Board Vision

- **Refocus** centralized recreational activities in northern Beaufort County
- Designate new county organization to manage recreation activities and assets north of the Broad River
 - Recreational Sports
 - Passive Parks
 - Boat Landings

Agents of Change



Key Point of Discussion

- *What is the county's level of commitment to parks and recreation amenities and services?*
 - *Scope of services offered?*
 - *Level of subsidy?*
 - *Source of subsidy?*
 - *Ad Valorem taxes?*
 - *Special Purpose Districts?*